



Raising Standards
Advancing Safety

 Call our Expert Sales Team for more information

First Fence Ltd | Kiln Way, Woodville, South Derbyshire, DE11 8EA

01283 512 111 | www.firstfence.co.uk | sales@firstfence.co.uk



Key Features

- ✔ **Safety**
(Safe, controlled closing everytime)
- ✔ **Fail Safe / Fail Close**
(remains locked or unlocked during power failure)
- ✔ **Corrosion Resistant**
(Galvanised and PPC to ISO and BS EN standards)

Suitable For

- ✔ **Industrial Sites**
- ✔ **Pedestrianised Zones**
- ✔ **Schools & Nurseries**
- ✔ **Guarded Car Parks**
- ✔ **Residential Entrances**



Safety

Complete with a Locinox hydraulic gate closer meaning your gate will close everytime safely and securely.



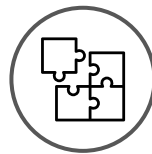
Corrosion Resistant

FFL 60P gates are hot-dip galvanised and polyester paint coated to secure against corrosion.



Fail Safe / Fail Close

FFL 60P gates can either be Fail Safe - meaning they remain unlocked during a power outage or Fail Close - when the power is off, the gate will stay locked and secure.



System-Based Solution

These gates are part of the full FFL range, including fully automatic and manual gates such as cantilever, tracked sliding, swing and bi-fold options.

Specifications

Material	Galvanised steel (ISO 1461)
Infill	Vertical bar, 868 & 358 mesh or Palisade
Finish	Polyester powder coated (BS EN 13438)
Colour	A range of RAL colours is available
Post Type	Bolt Down - standard Dig In - optional

Optional Extras



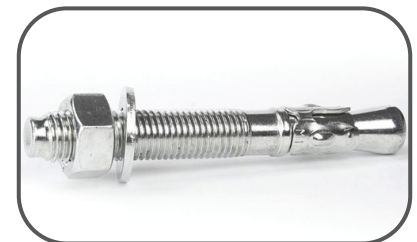
Locinox U-Safe - stainless steel safety cable



Anti-Climb Spikes

What's Included:

- Bolt down posts (2x)
- Gate Leaf
- Locinox Hydraulic Gate Closer
- Locinox Maglock (Fail Open) or Electric Strike (Fail Close)
- Bolt-on Hinges (2x)



Galvanized, zinc plated ground anchor bolts

 Call our Expert Sales Team for more information

First Fence Ltd | Kiln Way, Woodville, South Derbyshire, DE11 8EA

01283 512 111 | www.firstfence.co.uk | sales@firstfence.co.uk

Hardware Explained

The FFL 60P gate system is designed for efficiency and ease. These gate systems come ready to install, with all components supplied with each gate kit.

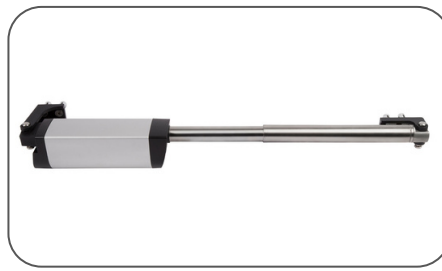
Infill Options

These gates have the option of 358 prison mesh, 868 twin mesh, palisade or a 25mm vertical bar infill, in order to fulfil more needs and purposes.



Hydraulic Gate Closer

All FFL 60P gates come with a Locinox Hydraulic Gate Closer, allowing for a simple set up and adjustable closing speeds.



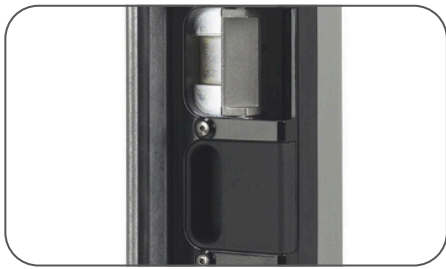
Fail Open

The FFL 60P Fail Open option comes with a Locinox Mag3000 maglock with integrated handles, when power fails, the gate can be opened manually.



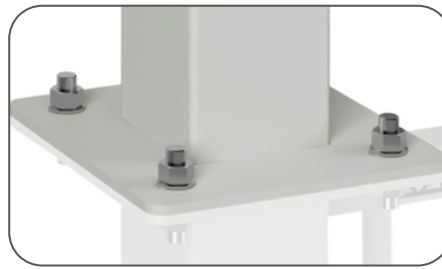
Fail Close

The FFL 60P Fail Close option includes a standard Locinox lock and an electric strike, when power fails the electric strike prevents the gate from being opened.



Bolt Down Posts

These gates come with 100mm posts, ready to bolt down using 4 x M16 ground anchor bolts per post (supplied separately). 120mm (M16) and 160mm (M20) posts also available.

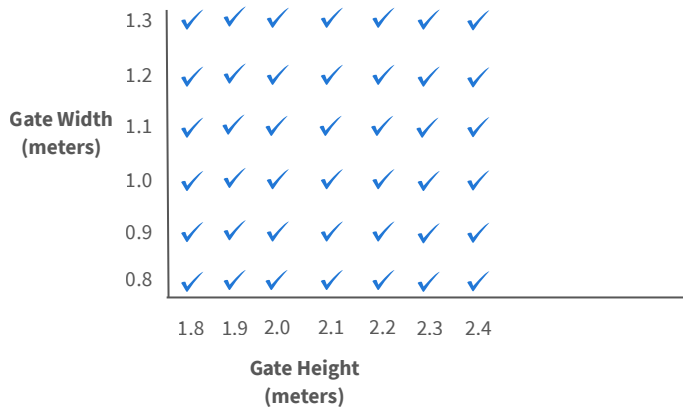


Access Control

All FFL 60P gates can be fitted and operated using most popular access control devices, such as intercoms and keypads.



Heights & Colours



Available in standard RAL colours. Custom colours are available on request, as is a galvanised-only option

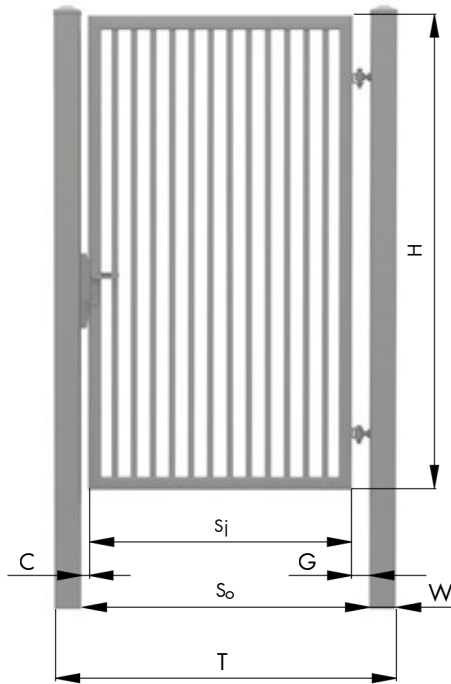


[Call our Expert Sales Team for more information](#)

First Fence Ltd | Kiln Way, Woodville, South Derbyshire, DE11 8EA

01283 512 111 | www.firstfence.co.uk | sales@firstfence.co.uk

Sizing



- So** - distance between posts (ordering size)
- Sj** - clear passage width with the gate installed
- C** - gate edge to post edge clearance
- G** - gate edge to post edge clearance
- H** - gate height (ordering size);
- T** - overall gate width with posts;
- W** - post size.

Ordered Width of Gate (So)	Gate height (mm) [H]	Clear Passage (mm)	Gate clearance to ground (mm)	Post dimensions	Post height (mm)	Required space (inc posts)
800 - 1300 mm	1800	So - 160	80	100x100	1820	So + 200
	1900	So - 160	80	100x100	1920	So + 200
	2000	So - 160	80	100x100	2020	So + 200
	2100	So - 160	80	100x100	2120	So + 200
	2200	So - 160	80	100x100	2220	So + 200
	2300	So - 160	80	100x100	2320	So + 200
	2400	So - 160	80	100x100	2420	So + 200

120mm (M16) and 160mm (M20) posts also available.

 Call our Expert Sales Team for more information

First Fence Ltd | Kiln Way, Woodville, South Derbyshire, DE11 8EA

01283 512 111 | www.firstfence.co.uk | sales@firstfence.co.uk