

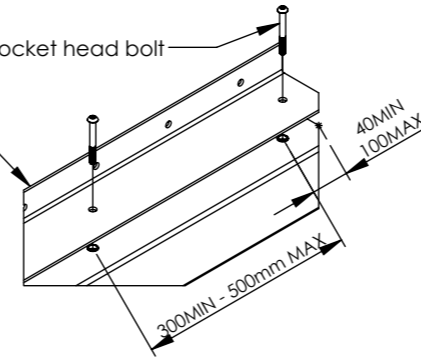
DO NOT SCALE DRAWING

Notes:

1. All materials to be mild steel and conform to relevant British standards.
2. All items to be pre-galvanised to BS EN 10346 or hot dip galvanised to ISO 1461.
3. Items can be powder coated on request, powder coating to : BS EN 13438
4. installation via R.A.M.S

Angle sections shall be a minimum size of 95x50x4mm and shall be fixed using M8 A2-70 socket head bolts to m8 rivnuts in the box section. Alternatively, the angle may be stitch welded, as per Palifence specification, with the angle set flush to the front face in both cases.

A2-70 stainless steel M8 x 70 mm socket head bolt



(3.0m) 4700/ (3.5m) 5300/ (4.0m) 5900/ (4.5m) 6600/ (5.0m) 7300/ (5.5m) 8100/ (6.0m) 8800/ (6.5m) 9400/ (7.0m) 10000/ (7.5m) 10600/ (8.0m) 11100/ (8.5m) 11600/ (9.0m) 12300/ (9.5m) 13200/ (10.0m) 13500/ (11.0m) 15000/ (12.0m) 16500mm (4700 MIN - 16500 MAX) OVERALL FFL 200 CANTILEVER GATE WIDTH

3.0m) 3200/ (3.5m) 3700/ (4.0m) 4200/ (4.5m) 4700/ (5.0m) 5200/ (5.5m) 5700/ (6.0m) 6600/ (6.5m) 7100/ (7.0m) 7600/ (7.5m) 8100/ (8.0m) 8600/ (8.5m) 9100/ (9.0m) 9600/ (9.5m) 10100/ (10.0m) 10600/ (11.0m) 11600/ (12.0m) 12600 (3200 MIN - 12600 MAX)

1725 MAX

100 MAX

350 MAX

100 MIN

1525 MAX

100 MAX

1600 MIN / 4500 MAX

FULLY WELDED SHS

25

TYP

(1.8m) 1650/ (2.0m) 1950/ (2.1m) 2150/ (2.4m) 2400mm HEIGHT OF CANTILEVER GATE LEAF

(1.8m) 1450/ (2.0m) 1750/ (2.1m) 1950/ (2.4m) 2200mm

100 MAX 350 MAX

200

50

100 MIN

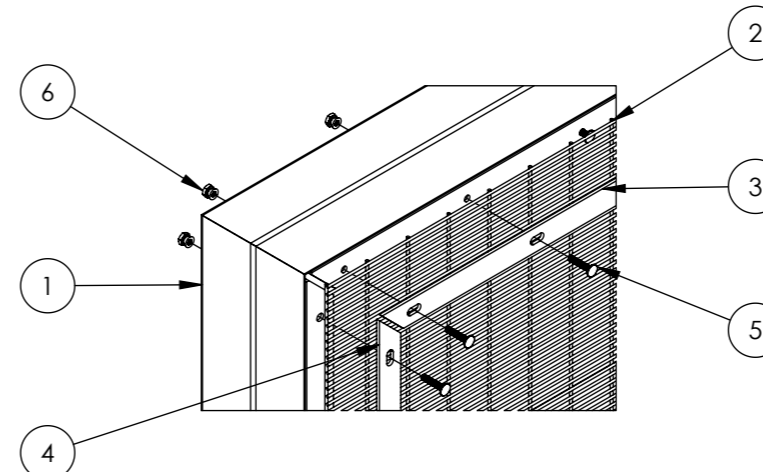
(1.8m) 1770 / (2.0m) 2070/ (2.1m) 2270/ (2.4m) 2520mm HEIGHT OF CANTILEVER GATE TO FINISHED GROUND LEVEL (120mm)

50 to 120mm Ground Clearance

All SHS box section for the gate leaf to be manufactured from a minimum size of 100x100x2 mm. Supports are to be installed at maximum centres of 1625 mm, measured from the centre of one box section to the centre of the next.

Holes in the angle shall be 2 mm larger than the bolt diameter (e.g. an 8 mm bolt requires a 10 mm hole). The clamp bar shall follow the same principle, but incorporate a 25 mm wide slotted hole to allow for adjustment and ease of installation.

50 to 120mm Ground Clearance



EXPLODED VIEW

Item	Component Name	Qty
1	ProFence® - SR1 FFL200 AUTOMATED CANTILEVER GATE WITH ANGLE TO SUIT PROFENCE	1
2	ProFence® - 358 MESH 3.0m HIGH X 2.5m WIDE CUT TO SIZE FENCE PANEL	4 MIN
3	ProFence® - STANDARD CROSS MEMBER MESH CLAMP BAR CANTALIVER 40X5	8 MIN
4	ProFence® - STANDARD UPRIGHT MESH CLAMP BAR CANTALIVER 40X5	8 MIN
5	ProFence® - M8 X 40 MIN CUP HEAD GALVANISED BOLTS GRADE 8.8	104 MIN
6	ProFence® - M8 SNAP OFF NUT FOR SECURITY BOLTS GALVANISED	104 MIN

REV	DESCRIPTION	DATE

NAME	DATE
W.P	17/04/2026
APVD	

Tolerance	0 - 50mm	± 0.2mm
	> 50 - 500mm	± 1mm
	>1000mm	± 3mm

Material: Steel	Weight: N/A
-----------------	-------------

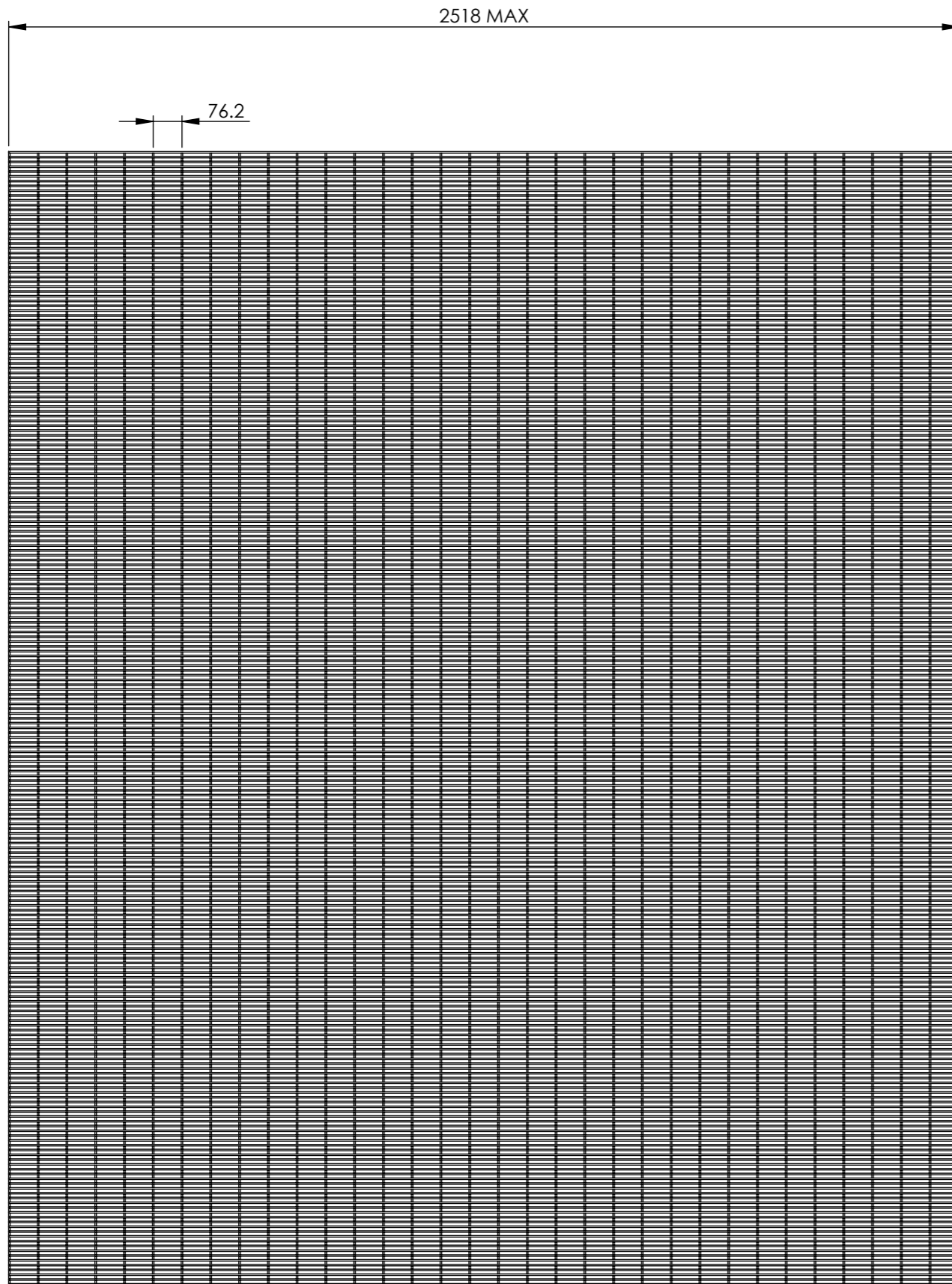
  

SKU:	CANTILEVER PRO
TITLE:	CANTILEVER PRO - PROFENCE 358 - FFL200 - 1.8m x 2.4m High - 3.0m x 12.0m Wide
REV	A
	A3

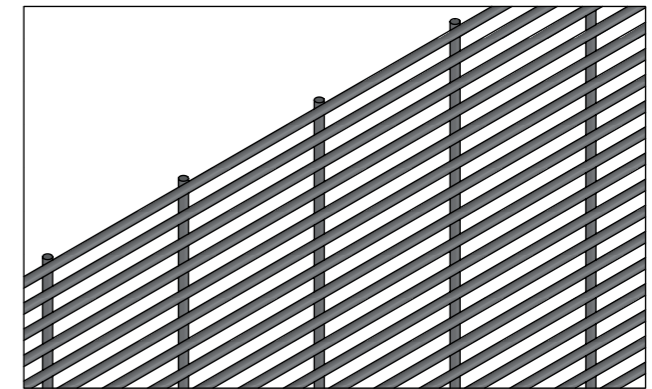
SCALE: 1:25	SHEET 3 OF 11
-------------	---------------

DO NOT SCALE DRAWING

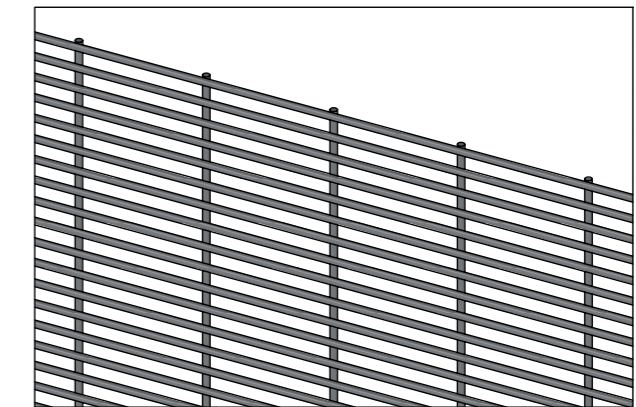


The mesh panels used in the cantilever gate system are cut to size to precisely fit each gate segment. Once cut, the panels are securely bolted onto the gate frame using appropriate fixings to ensure structural integrity and consistent visual alignment with adjacent fencing systems.

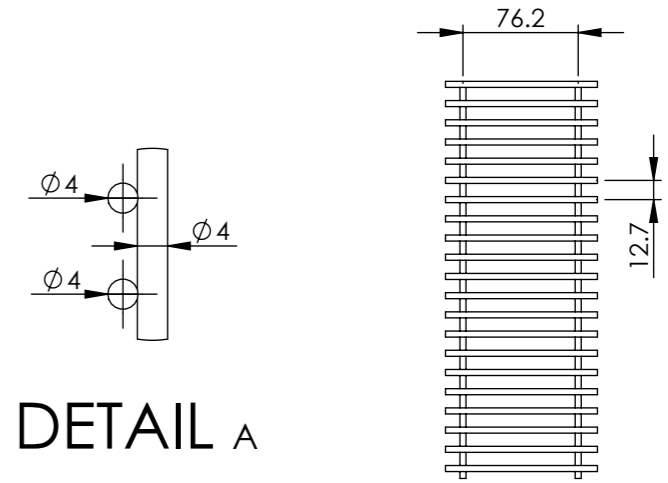
DETAIL A



3D VIEW 1


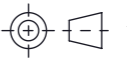


3D VIEW 2



REV	DESCRIPTION	DATE

NAME	DATE	 <b>CANTILEVER PRO</b>
DRAWN	W.P 17/04/2026	
APVD		
Tolerance	0 - 50mm	± 0.2mm
	> 50 - 500mm	± 1mm
	> 1000mm	± 3mm
 Third Angle Projection		TITLE: CANTILEVER PRO - PROFENCE 358 - FFL200 - 1.8m x 2.4m High - 3.0m x 12.0m Wide
Material: Steel		REV: A
WEIGHT: N/A	SCALE: 1:15	SHEET 4 OF 11