

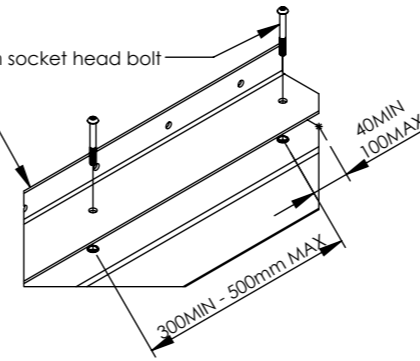
DO NOT SCALE DRAWING

Notes:

1. All materials to be mild steel and conform to relevant British standards.
2. All items to be pre-galvanised to BS EN 10346 or hot dip galvanised to ISO 1461.
3. Items can be powder coated on request, powder coating to : BS EN 13438
4. installation via R.A.M.S

A2-70 stainless steel M8 x 70 mm socket head bolt

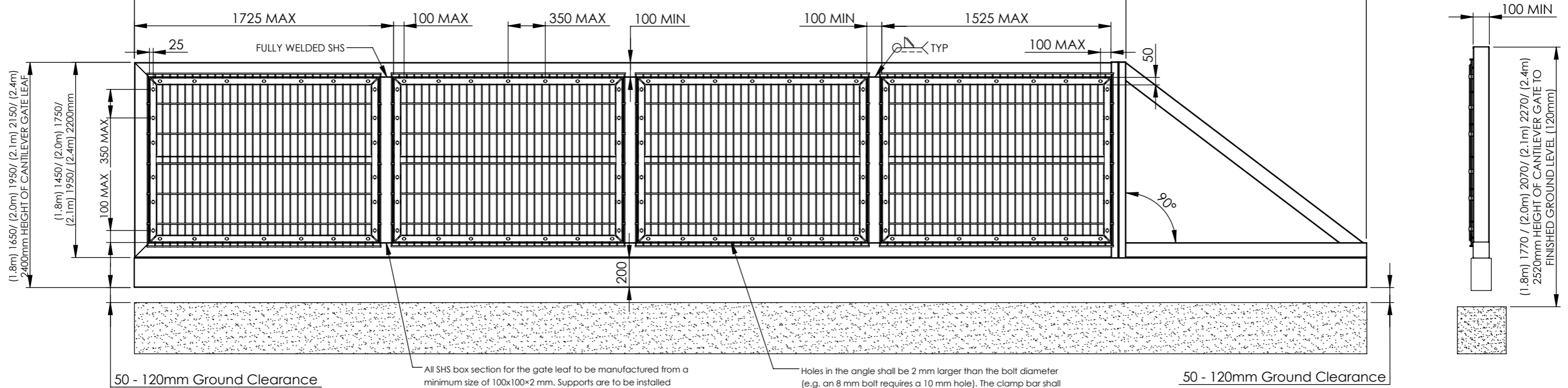
Angle sections shall be a minimum size of 95x50x4mm and shall be fixed using M8 A2-70 socket head bolts to m8 rivnuts in the box section. Alternatively, the angle may be stitch welded, as per Palifence specification, with the angle set flush to the front face in both cases.



(3.0m) 4700/ (3.5m) 5300/ (4.0m) 5900/ (4.5m) 6600/ (5.0m) 7300/ (5.5m) 8100/ (6.0m) 8800/ (6.5m) 9400/ (7.0m) 10000/ (7.5m) 10600/ (8.0m) 11100/ (8.5m) 11600/ (9.0m) 12300/ (9.5m) 13200/ (10.0m) 13500/ (11.0m) 15000/ (12.0m) 16500mm (4700 MIN - 16500 MAX) OVERALL FFL 200 CANTILEVER GATE WIDTH

3.0m) 3200/ (3.5m) 3700/ (4.0m) 4200/ (4.5m) 4700/ (5.0m) 5200/ (5.5m) 5700/ (6.0m) 6600/ (6.5m) 7100/ (7.0m) 7600/ (7.5m) 8100/ (8.0m) 8600/ (8.5m) 9100/ (9.0m) 9600/ (9.5m) 10100/ (10.0m) 10600/ (11.0m) 11600/ (12.0m) 12600 (3200 MIN - 12600 MAX)

1600 MIN / 4500 MAX



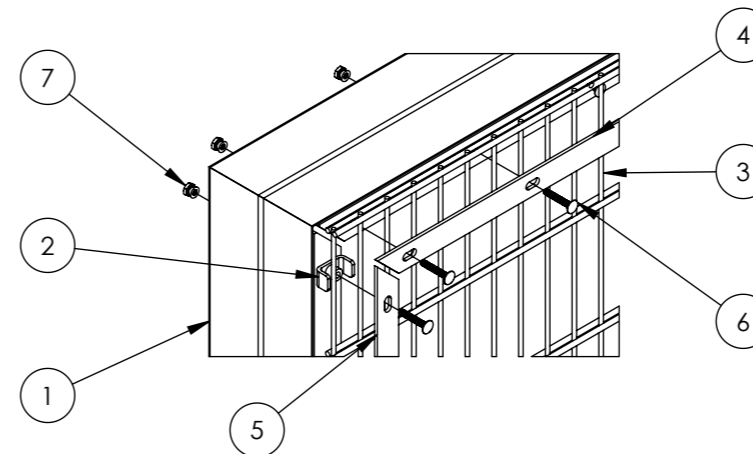
50 - 120mm Ground Clearance

All SHS box section for the gate leaf to be manufactured from a minimum size of 100x100x2 mm. Supports are to be installed at maximum centres of 1625 mm, measured from the centre of one box section to the centre of the next.

Holes in the angle shall be 2 mm larger than the bolt diameter (e.g. an 8 mm bolt requires a 10 mm hole). The clamp bar shall follow the same principle, but incorporate a 25 mm wide slotted hole to allow for adjustment and ease of installation.

50 - 120mm Ground Clearance

Item	Component Name	Qty
1	ProFence® - SR1 FFL200 AUTOMATED CANTILEVER GATE WITH ANGLE TO SUIT PROFENCE	1
2	ProFence® - FIXING CLIP	48 MIN
3	ProFence® - 868 MESH 3.0m HIGH X 2.5m WIDE CUT TO SIZE FENCE PANEL	4 MIN
4	ProFence® - STANDARD CROSS MEMBER MESH CLAMP BAR CANTALIVER 40X5	8 MIN
5	ProFence® - STANDARD UPRIGHT MESH CLAMP BAR CANTALIVER 40X5 X 1080MM	8 MIN
6	ProFence® - CUP HEAD BOLT M8 x 50mm GALVANISED BOLTS GRADE 8.8	104 MIN
7	ProFence® - M8 SNAP OFF NUT FOR SECURITY BOLTS	104 MIN

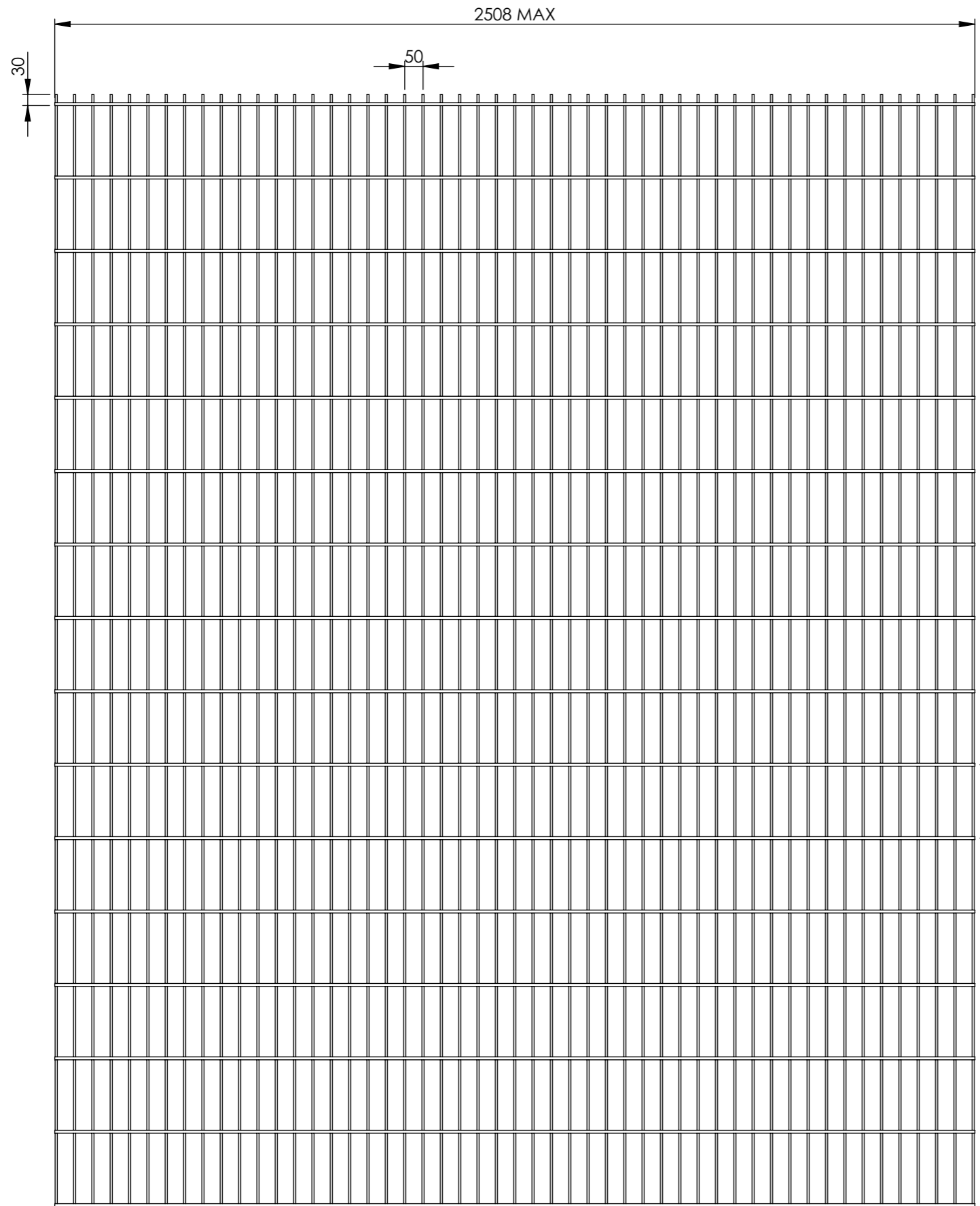


EXPLODED VIEW

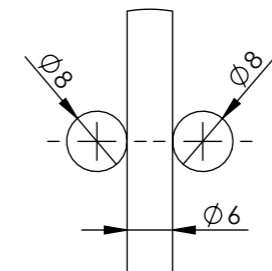
REV	DESCRIPTION	DATE

NAME	DATE	
DRAWN	W.P 17/04/2026	
APVD		
Tolerance	0 - 50mm ± 0.2mm	CANTILEVER PRO SKU:
	> 50 - 500mm ± 1mm	
	> 1000mm ± 3mm	
Material: Steel	TITLE: CANTILEVER PRO - PROFENCE 868 - FFL200 - 1.8m x 2.4m High - 3.0m x 12.0m Wide	
WEIGHT: N/A	SCALE: 1:28	REV A A3
SHEET 1 OF 11		

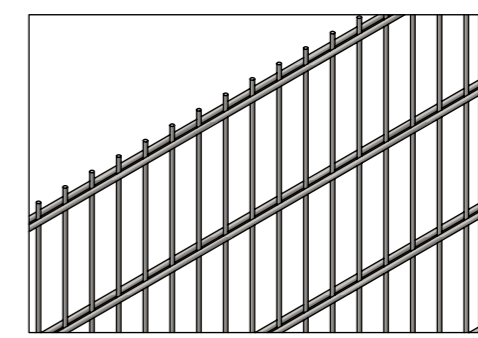
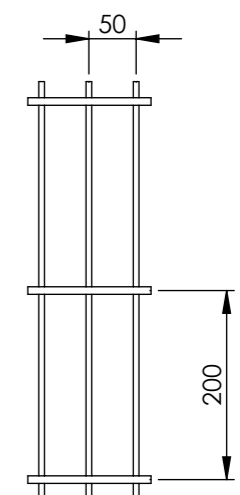
DO NOT SCALE DRAWING



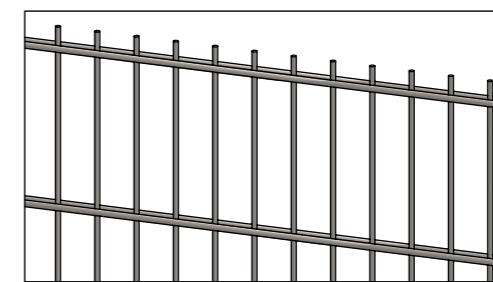
The mesh panels used in the cantilever gate system are cut to size to precisely fit each gate segment. Once cut, the panels are securely bolted onto the gate frame using appropriate fixings to ensure structural integrity and consistent visual alignment with adjacent fencing systems.



DETAIL A




3D VIEW 1



3D VIEW 2

REV	DESCRIPTION	DATE

NAME	DATE		
DRAWN W.P	17/04/2026		
APVD		SKU:	
Tolerance	0 - 50mm ± 0.2mm	CANTILEVER PRO	
	> 50 - 500mm ± 1mm		
	> 1000mm ± 3mm		
Material: Steel	TITLE: CANTILEVER PRO - PROFENCE		
WEIGHT: N/A	868 - FFL200 - 1.8m x 2.4m High		
	SCALE: 1:14	REV A	
		A3	
		SHEET 2 OF 11	