



Call our Expert Sales Team for more information.

First Fence Ltd | Kiln Way, Woodville, South Derbyshire, DE11 8EA
01283 512 111 | www.firstfence.co.uk | sales@firstfence.co.uk



Distinguished Protection. Classic Design.

Designed to integrate flawlessly with our vertical railing systems, FlexiRail[®] Ball Top Railing Gates provide a sophisticated security solution characterized by their iconic spherical finials. Forged from premium-grade galvanised steel, this range offers a heavy-duty, high-performance alternative to our EnviroRail[®] line—delivering a prestigious and formidable perimeter for private estates, corporate headquarters, and high-end public spaces.

UniSlide Technology: Every gate comes with the UniSlide kit, an advanced fastening system ensuring smooth, consistent, and dependable operation. **Adaptable Hardware:** This hardware can be simply upgraded to premium key-access or digital locking systems.

Key Features

- ⊙ **Superb Corrosion Resistance**
(The dual-layer finish protects the gate from rust)
- ⊙ **Architectural Finials**
(Ball finials give a prestige aesthetic to the gates)
- ⊙ **Low-Maintenance Longevity**
(Unlike wood, steel gates require no staining or treatment)
- ⊙ **Modular Integration**
(Modular design allows easy upgrades to key access or digital locks)
- ⊙ **Three Hinge Security**
(In the unlikely event of a hinge failure the gate will stay secure)

Suitable For

- ⊙ Educational Institutions
- ⊙ Public Parks & Playgrounds
- ⊙ Commercial Perimeters
- ⊙ Residential Gardens
- ⊙ Public Infrastructure



Choose Your Style

Single or Double Leaf

Single Leaf Gates: Optimised for pedestrian access and restricted footpaths, these gates offer a compact, secure, and space-saving entry solution.

Double Leaf Gates: Engineered for expansive openings—including driveways, vehicle access, and maintenance tracks—providing a wider span and enhanced operational versatility.

Both configurations are manufactured from the same high-tensile steel and can be integrated with various locking systems to align with your security needs.

To ensure a seamless installation on any terrain, all gates are available in bolt-down options for concrete surfaces or dig-in posts for natural ground.

Gate Kit Contents

Single Leaf Gates

- FlexiRail[®] Gate Leaf (1)
- Adjustable Gate Eyes (3)
- Catch Gate Post (1)
- Hinge Gate Post (1)
- FlexiRail[®] Slide Bolt Locking Plate (1)
- UniSlide Padlockable Gate Kit (1)
- Locking Drop Bolt (1)

Double Leaf Gates

- FlexiRail[®] Gate Leaf (2)
- Adjustable Gate Eyes (6)
- Hinge Gate Post (2)
- FlexiRail[®] Slide Bolt Locking Plate (Double) (1)
- UniSlide Padlockable Gate Kit (Double) (1)
- Locking Drop Bolt (2)

Three Hinges & A Drop Bolt

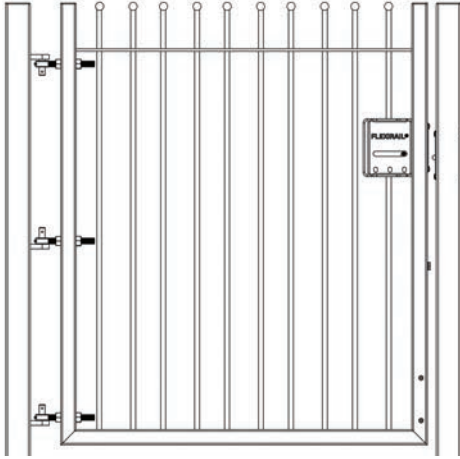
Using three hinges instead of the traditional two is standard for professional-grade installations like the FlexiRail[®] series. It isn't about extra hardware, it is a critical engineering choice that affects the lifespan, safety and operation of the gate. Gate restrainers are not required.

Each single leaf gate comes with a drop bolt, the double leaf gate comes with two.



Call our Expert Sales Team for more information.

Single Leaf Gate



Height available: 0.9m, 1.0m, 1.2m, 1.5m, 1.8m, 2.0m, 2.1m and 2.4m

Width available: 1.0m, 1.2m, 1.5m and 2.0m

Other sizes: Custom

Material: Galvanised Steel

Finish: Galvanised or Powder Coated

Bar Diameter: 12mm (0.9m, 1.0m and 1.2m heights)

Bar Diameter: 16mm (1.5m and 1.8m heights)

Bar Diameter: 20mm (2.0m, 2.1m and 2.4m heights)

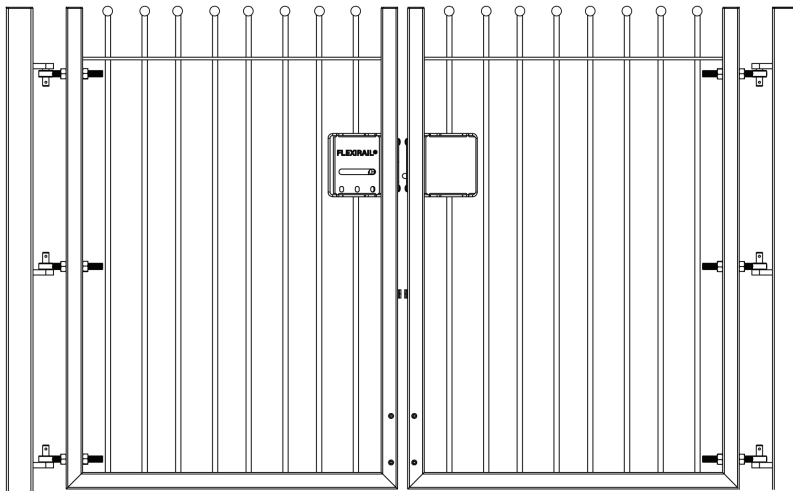
Gate Hanging Side: Universal

Post Type: Dig In or Bolt Down

Hinges: 3

Drop Bolt: 1

Double Leaf Gate



Height available: 0.9m, 1.0m, 1.2m, 1.5m, 1.8m, 2.0m, 2.1m and 2.4m

Width available: 2.0m, 3.0m and 4.0m

Other sizes: Custom

Material: Galvanised Steel

Finish: Galvanised or Powder Coated

Bar Diameter: 12mm (0.9m, 1.0m and 1.2m heights)

Bar Diameter: 16mm (1.5m and 1.8m heights)

Bar Diameter: 20mm (2.0m, 2.1m and 2.4m heights)

Gate Hanging Side: Universal

Post Type: Dig In or Bolt Down

Hinges: 6 (3 per leaf)

Drop Bolt: 2

Post Specifications

Colour Key

SYSTEM HEIGHT	POST BOX SIZE	BASE PLATE SIZE
0.9m, 1.0m, 1.2m	60 x 60 x 2.5mm	120 x 120 x 5mm
1.5m	80 x 80 x 2.5mm	160 x 160 x 8mm
1.8m	100 x 100 x 3mm	200 x 200 x 10mm
2.0m, 2.1m, 2.4m	120 x 120 x 3mm	240 x 240 x 10mm

LEAF WIDTH (Per Leaf)

	1.0m	1.2m	1.5m	2.0m	2.5m	3.0m	3.5m	4.0m	4.5m	5.0m
0.9m, 1.0m, 1.2m	Red	Red	Orange	Orange	Yellow	Yellow	Yellow	Yellow	Yellow	Yellow
1.5m	Orange	Orange	Orange	Orange	Yellow	Yellow	Yellow	Yellow	Yellow	Yellow
1.8m	Orange	Orange	Orange	Orange	Yellow	Yellow	Yellow	Yellow	Yellow	Yellow
2.0m, 2.1m, 2.4m	Orange	Orange	Orange	Orange	Yellow	Yellow	Yellow	Yellow	Yellow	Yellow

Note: Hinge and Catch Posts are the same dimensions.



Call our Expert Sales Team for more information.

Essential Extras

For a strong installation, you will need post mix or ground anchor bolts, depending on the post style; a dig in or bolt down format.



Post Mix
POST-MIX-0001



M16 x 125mm Ground Anchor
ACCS-GEN-1100



M16 x 190mm Resin Stud
ACCS-GEN-15015



Injection Resin Vinyl Ester Cartridge
ACCS-GEN-1950

Dig In Depth Requirements

System Height	Dig In Depth
0.9m	800mm
1.0m	700mm
1.2m	500mm
1.5m	500mm

System Height	Dig In Depth
1.8m	600mm
2.0m	1100mm
2.1m	1000mm
2.4m	700mm

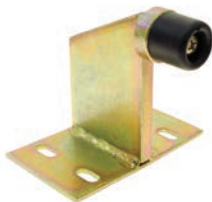
Gate Accessories

To ensure your gate operates safely and maintains its aesthetic appeal over time, investing in the right hardware is essential.

Security can be bolstered with a heavy-duty padlock, ideally one with a hardened steel shackle to resist cutting and prying attempts. To keep the installation looking pristine, a touch-up spray paint can matched to specific RAL colours allows you to quickly seal any chips or scratches, preventing rust and ensuring a seamless, professional finish that lasts for years



Padlock
ACCS-GATE-9100



Floor-Mounted Gate Stop
ACCS-MSH-1830



Spray Paint Touch Up

Zinc - SPRY-PAI-0001
Green - SPRY-PA-6005
Black - SPRY-PAI-9005
Red - SPRY-PAI-3020
Traffic Yellow - SPRY-PAI-1023
Blue - SPRY-PAI-5010
Light Blue - SPRY-PAI-5012
Dusty Grey - SPRY-PAI-7037
Anthracite Grey - SPRY-PAI-7016
Sky Blue - SPRY-PAI-5015

Modular Security

Standard with a Unislide Slider Kit, our modular design lets you easily upgrade to premium key or digital locking systems in seconds. Available for single and double leaf gates

- Gatemaster Universal Deadbolt Lock Kit
- Gatemaster Universal Latch Deadlock Kit
- Gatemaster Universal Digital Double Sided Kit



See website for full details



Call our Expert Sales Team for more information.