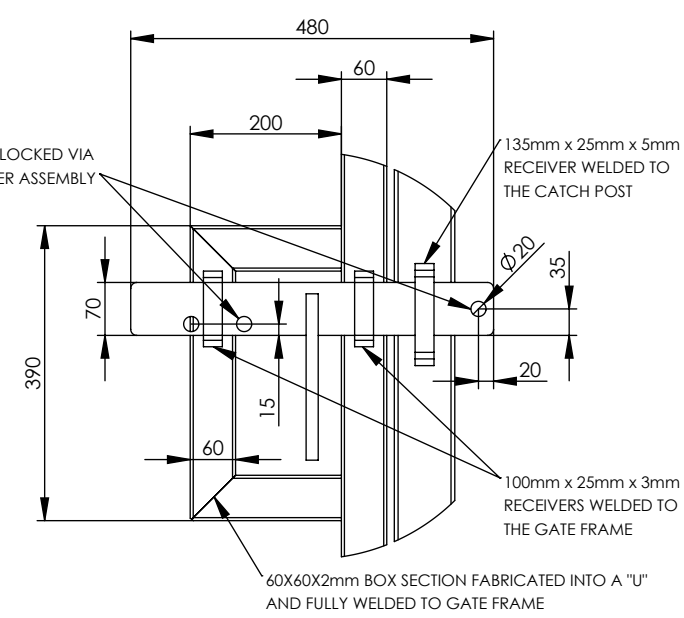
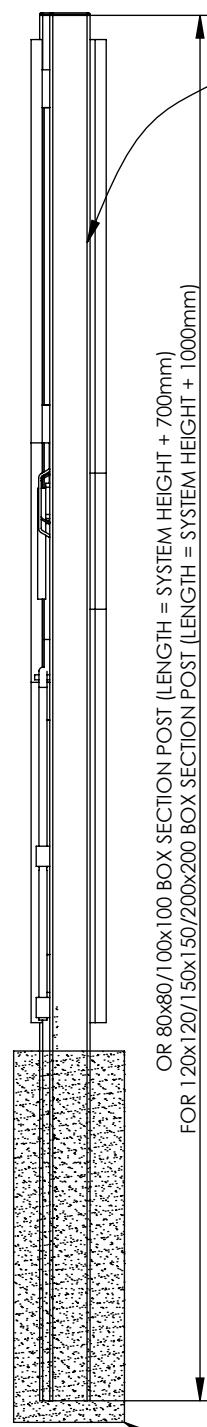
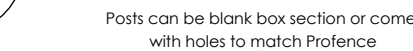
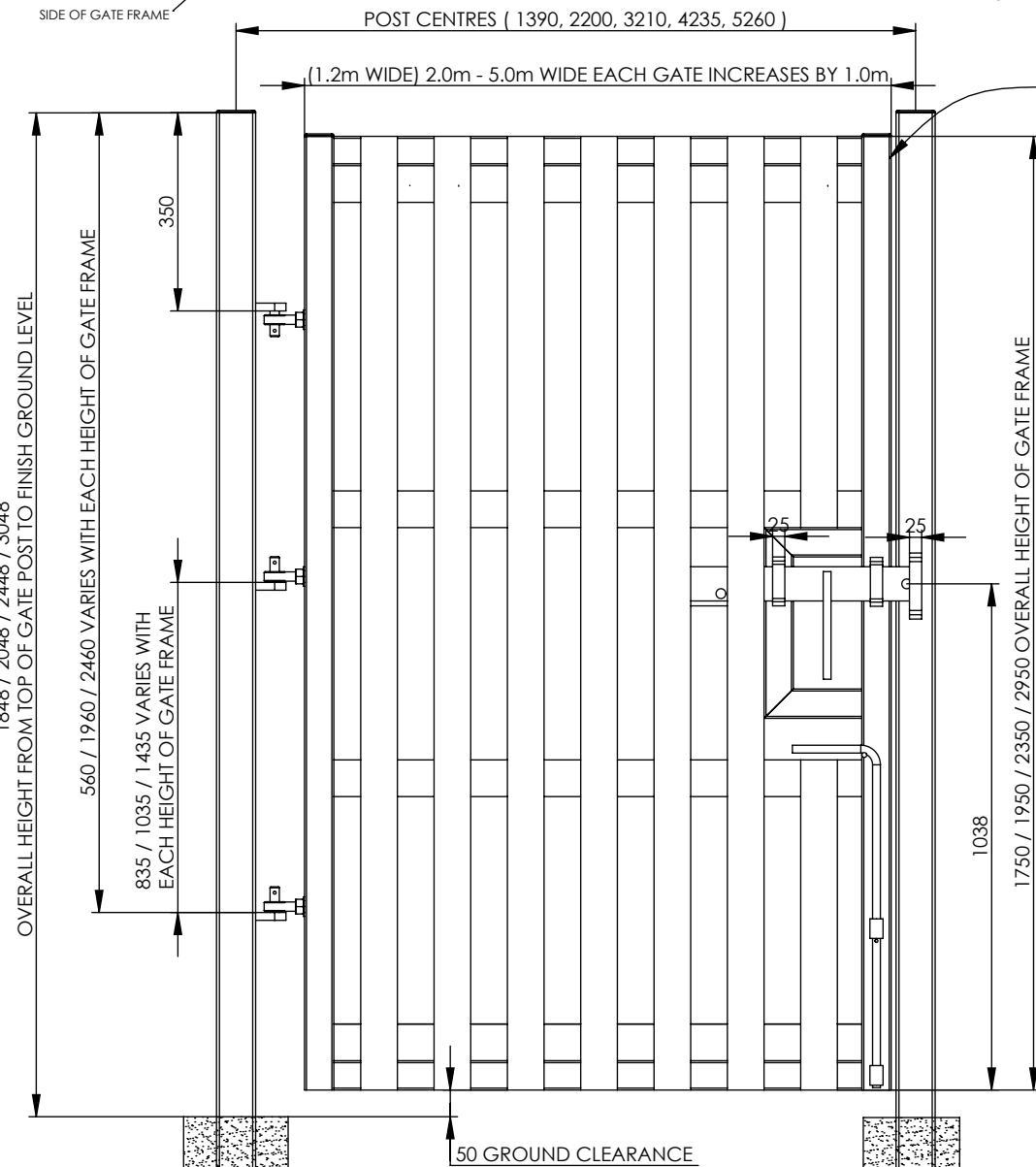
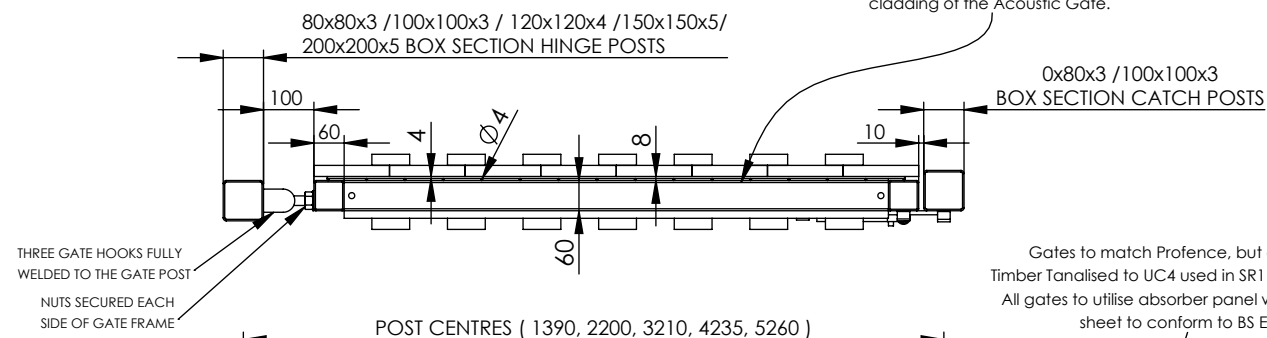
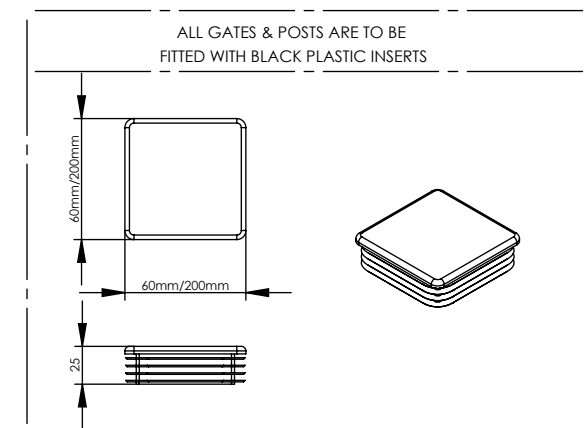
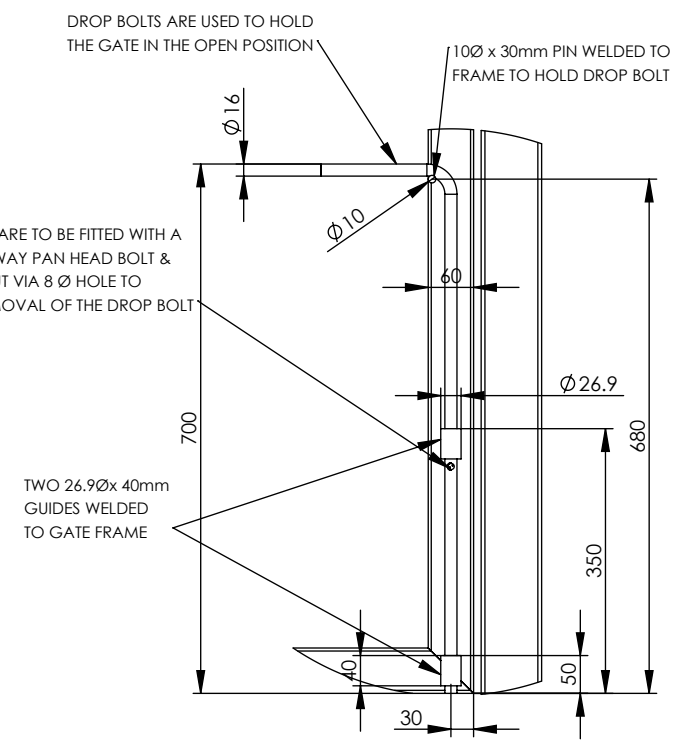


DO NOT SCALE DRAWING

Please refer to the 358 Profence LPS 1175 Range drawing for detailed manufacturing guidelines prior to the cladding of the Acoustic Gate.

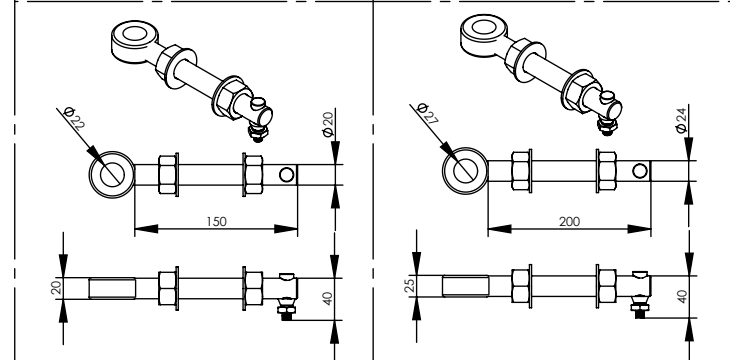


GENERIC SLIDER CONFIGURATION & LOCKING ARRANGEMENT





- | Notes: | |
|--------|---|
| 1. | All metal to be mild steel and conform to relevant British standards. |
| 2. | All wood to be tanalised and conform to relevant British standards. |
| 3. | Installation via R.A.M.S |
| 4. | Ensure maintenance of Acoustic Gates is maintained. |

- | | |
|--|--|
| ALL GATES WITH 80x80/100x100/120x120
BOX SECTION HINGE POSTS ARE TO BE FITTED
WITH GALVANISED EYE BOLTS & M8x40mm
SADDLE BOLT / SHEAR NUT | ALL GATES WITH 150x150 / 200x200 BOX
SECTION HINGE POSTS ARE TO BE FITTED WITH
GALVANISED EYE BOLTS & M8x40mm SADDLE
BOLT / SHEAR NUT |
|--|--|



FOR GATES TO BE COMPLIANT THEY MUST
BE FITTED WITH ONE OF THE PADLOCKS BELOW

Henry Squire & Son Padlocks List		
Product Name	Shackle (mm)	Security Rating
SS50S	26.0	2
SS50CS	16.0	2
SS65S	29.0	3
SS65CS	19.0	3
SS80S	34.5	3

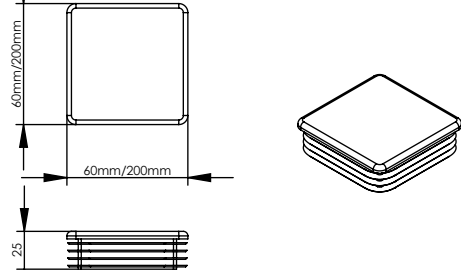
		REV		DESCRIPTION	
				DATE	
		NAME		DATE	
DRAWN		W,P		07/02/2025	
APVD					
					
Tolerance		0 - 50mm		± 0.2mm	
		> 50 - 500mm		± 1mm	
		> 1000mm		± 3mm	
		SKU:			
		SR1 ACOUSTIGUARD			
		Third Angle Projection		TITLE:	
Material: N/A		WEIGHT: N/A		SR1 AcoustiGuard Gate 1.8m x 3.0 High - 1.0m x 5.0m Wide Single Leaf Dig In Kit	
		SCALE: N/A		REV A A3	
		SHEET 1		OF 9	

DO NOT SCALE DRAWING

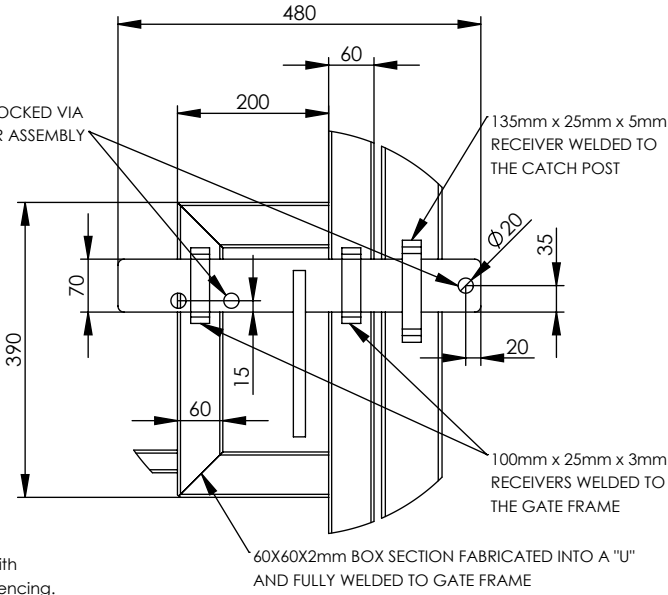
Notes:

1. All metal to be mild steel and conform to relevant British standards.
2. All wood to be tanalised and conform to relevant British standards.
3. Installation via R.A.M.S
4. Ensure maintenance of Acoustic Gates is maintained.

ALL GATES & POSTS ARE TO BE FITTED WITH BLACK PLASTIC INSERTS

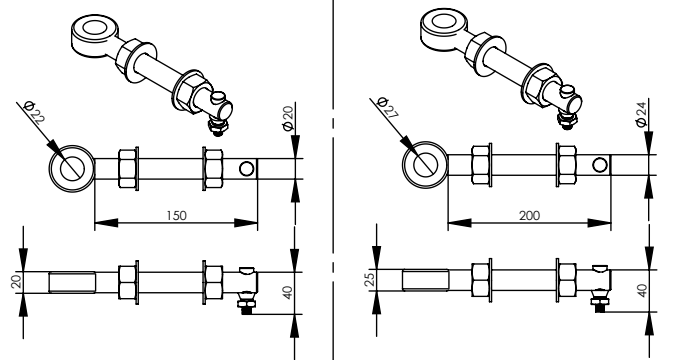


GENERIC SLIDER CONFIGURATION & LOCKING ARRANGEMENT



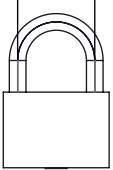
ALL GATES WITH 80x80/100x100/120x120 BOX SECTION HINGE POSTS ARE TO BE FITTED WITH GALVANISED EYE BOLTS & M8x40mm SADDLE BOLT / SHEAR NUT

ALL GATES WITH 150x150 / 200x200 BOX SECTION HINGE POSTS ARE TO BE FITTED WITH GALVANISED EYE BOLTS & M8x40mm SADDLE BOLT / SHEAR NUT



FOR GATES TO BE COMPLIANT THEY MUST BE FITTED WITH ONE OF THE PADLOCKS BELOW

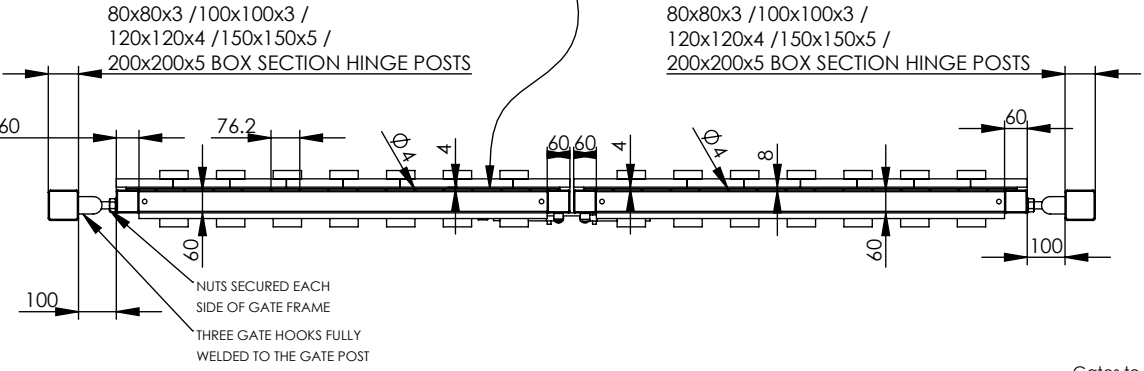
SHACKLE



Henry Squire & Son Padlocks List		
Product Name	Shackle (mm)	Security Rating
SS50S	26.0	2
SS50CS	16.0	2
SS65S	29.0	3
SS65CS	19.0	3
SS80S	34.5	3

REV		DESCRIPTION	DATE
NAME		DATE	
DRAWN	W.P	07/02/2025	
APV'D			
Tolerance	0 - 50mm	± 0.2mm	
	> 50 - 500mm	± 1mm	
	> 1000mm	± 3mm	
Third Angle Projection			
Material: N/A			
WEIGHT: N/A			
TITLE: SR1 AcoustiGuard Gate 1.8m x 3.0 High - 2.0m x 10.0m Wide Double Leaf Dig In Kit		REV A A3	
SCALE: N/A		SHEET 2 OF 9	

Please refer to the 358 Profence LPS 1175 Range drawing for detailed manufacturing guidelines prior to the cladding of the Acoustic Gate.

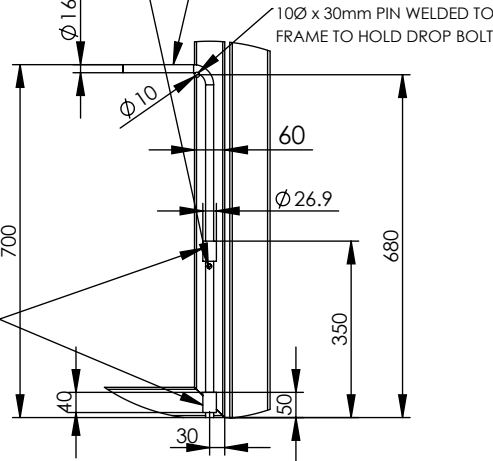


Gates to match Profence, but cladded with Timber Tanalised to UC4 used in SR1 Acoustic Fencing. All gates to utilise absorber panel wrapped in nylon sheet to conform to BS EN 1793

Posts can be blank box section or come with holes to match Profence

DROP BOLTS ARE TO BE FITTED WITH A M5x20 ONE-WAY PAN HEAD BOLT & M5 SHEAR NUT VIA 8 Ø HOLE TO PREVENT REMOVAL OF THE DROP BOLT

DROP BOLTS ARE USED TO HOLD THE GATE IN THE OPEN POSITION



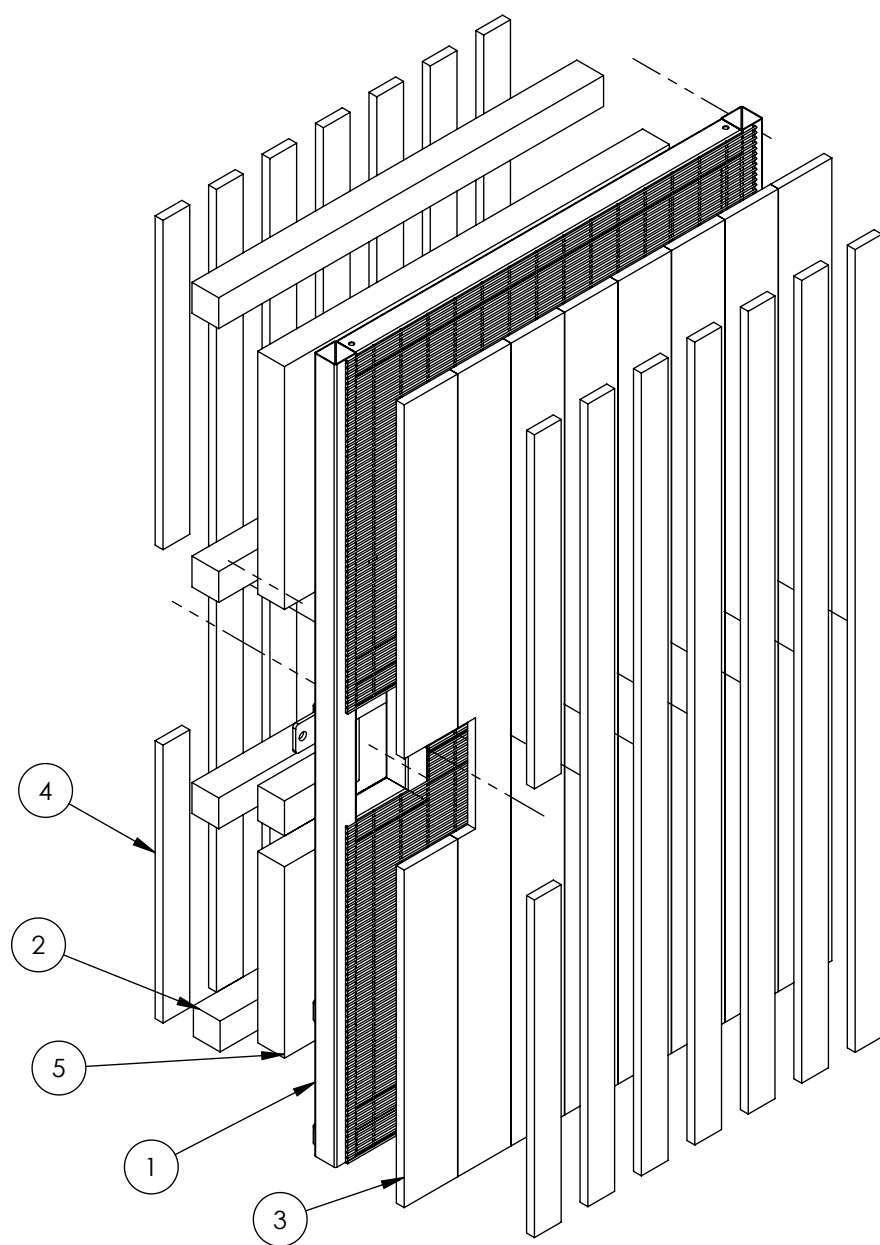
ALL GATES ABOVE 1200mm WIDE REQUIRE DROP BOLTS

700MM TO 1000MM IN GROUND DEPENDING ON HEIGHT OF GATE

DIG IN DOUBLE LEAF GATE INTERNAL VIEW OPENING 90° IN / OUT

650x300x300mm, GRADE C20/25 MINIMUM CONCRETE FOUNDATION

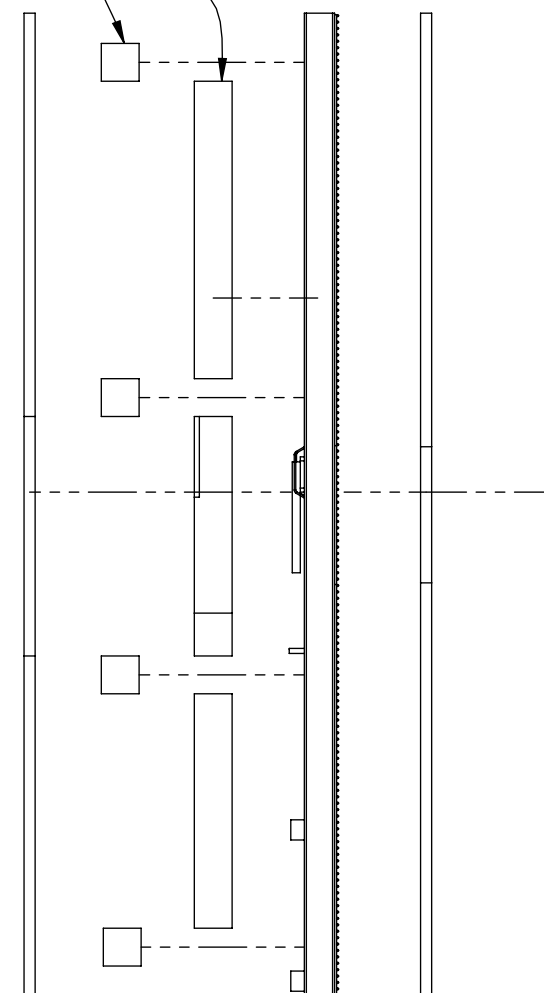
C20/25 MINIMUM CONCRETE FOUNDATION GRADE





ISOMETRIC EXPLODED VIEW

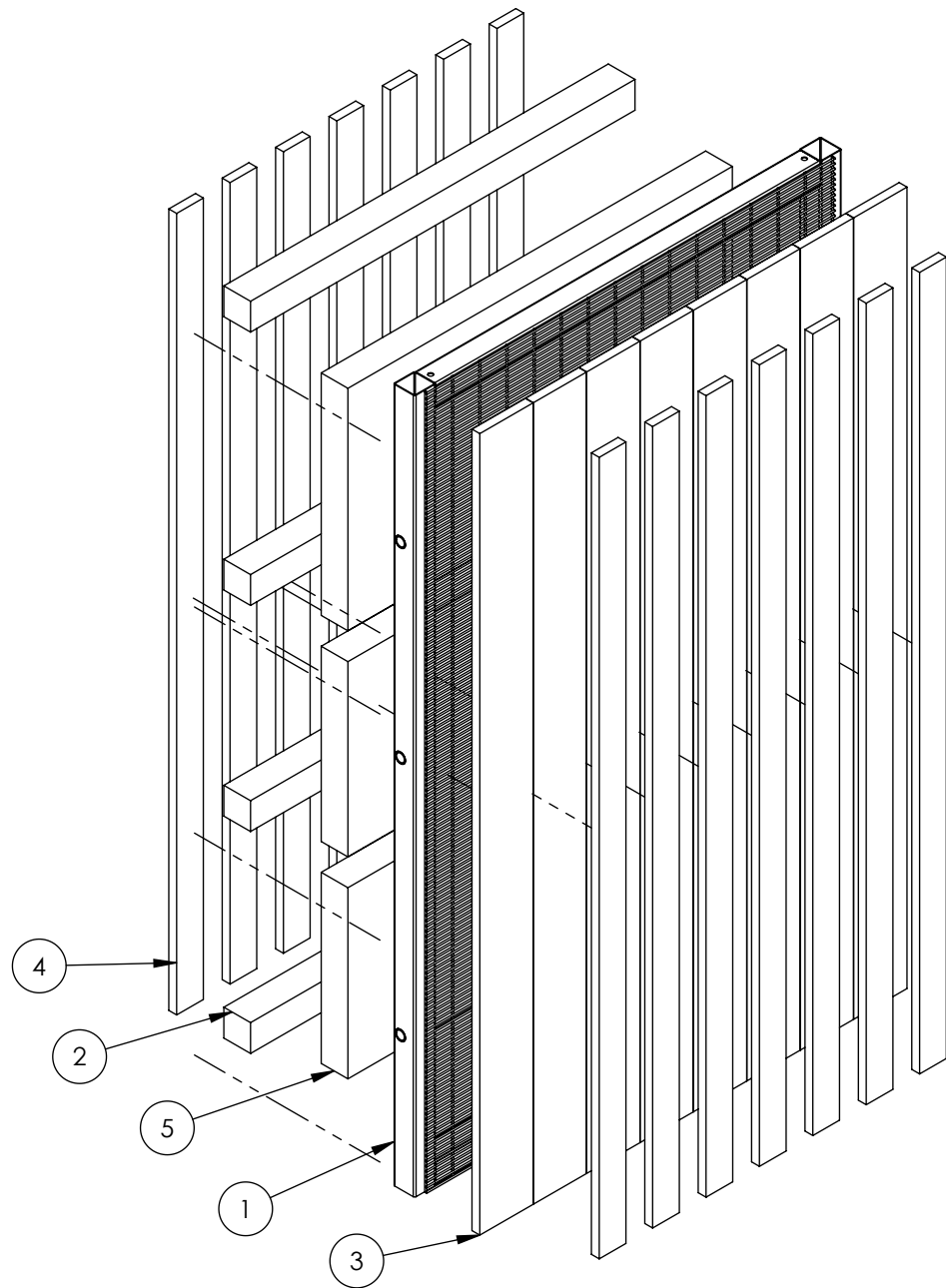
Item	SR1 EchoAbsorb Slider Gate Leaf	Qty
1	1.8m - 3.0m High x 1.0m - 5.0m Wide Profence Slider Gate Leaf	1
2	Horizontal Rail 75x75mm	4 MIN
3	EchoAbsorb Straight Board 150x22mm	8 MIN
4	Cover Strips 75x22mm	14 MIN
5	EchoAbsorb Insulation Cut To Size	3 MIN

Insulation & Cross rail covered with nylon water resistant sheet, this stops the insulation from getting wet while also keeping the insulation in place and reducing sound making it through the panel.



SIDE EXPLODED VIEW

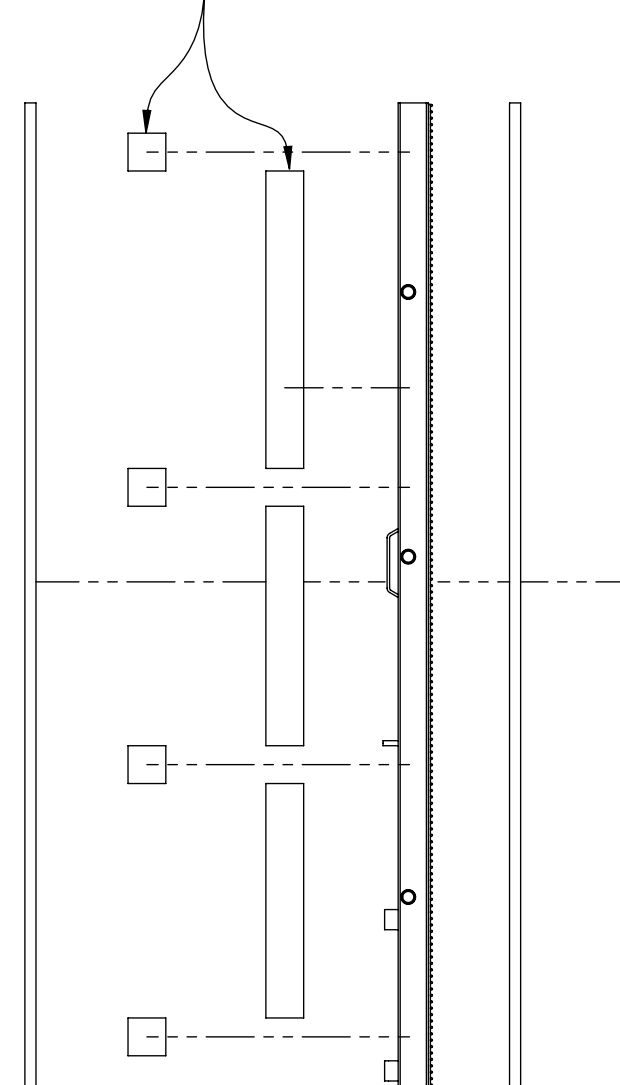
			REV		DESCRIPTION			
					DATE			
NAME		DATE		<div> HIRE & SALES</div>				
DRAWN		W.P.					07/02/2025	
APV'D								
Tolerance	0 - 50mm		± 0.2mm		SKU:			
	> 50 - 500mm		± 1mm		SR1 ACOUSTIGUARD			
	> 1000mm		± 3mm					
<div></div> Third Angle Projection			TITLE:					
Material: N/A			SR1 AcoustiGuard Gate 1.8m x 3.0 High - 1.0m x 10.0m Wide Dig In Kit					
WEIGHT: N/A			REV					
			A					
			A3					
			SCALE: N/A					
			SHEET 3 OF 9					




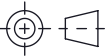
ISOMETRIC EXPLODED VIEW

Item	SR1 EchoAbsorb Catch Gate Leaf	Qty
1	1.8m - 3.0m High x 1.0m - 5.0m Wide Profence Catch Gate Leaf	1
2	Horizontal Rail 75x75mm	4 MIN
3	EchoAbsorb Straight Board 150x22mm	8 MIN
4	Cover Strips 75x22mm	14 MIN
5	EchoAbsorb Insulation Cut To Size	1 MIN

Insulation & Cross rail covered with nylon water resistant sheet, this stops the insulation from getting wet while also keeping the insulation in place and reducing sound making it through the panel.



SIDE EXPLODED VIEW

		REV	DESCRIPTION	DATE	
		<div> HIRE & SALES</div>			
DRAWN	NAME				DATE
APV'D					
Tolerance	0 - 50mm	± 0.2mm			
	> 50 - 500mm	± 1mm			
	> 1000mm	± 3mm			
		Third Angle Projection			
Material: N/A		SKU:			
		SR1 ACOUSTIGUARD			
		TITLE:		REV	
		SR1 AcoustiGuard Gate 1.8m x 3.0 High - 1.0m x 10.0m Wide Dig In Kit		A	
				A3	
WEIGHT: N/A		SCALE: N/A		SHEET 4 OF 9	