



Secured by Design



Police Preferred Specification



 Call our Expert Sales Team for more information.

First Fence Ltd | Kiln Way, Woodville, South Derbyshire, DE11 8EA
01283 512 111 | www.firstfence.co.uk | sales@firstfence.co.uk



UK-QMS-00503-TEM

High-Security Railing Gates Certified to LPS 1175 SR1 (A1)

The EnviroProtect® Anti-Climb gate system is certified to LPS 1175 SR1 (A1), providing enhanced security at site access points where anti-climb performance is essential. Incorporating sections of 358 prison mesh—featuring tight 76.2 mm × 12.7 mm apertures that prevent finger insertion and climbing—the gate range is ideal for sites requiring certified SR1 resistance with a softer, railing-style appearance internally and robust anti-climb protection externally.

Key Features

- LPS 1175 SR1 A1 Certified**
 Independently tested and certified to resist opportunistic and experienced attacks using a range of manual and concealable tools.
- Anti-Climb Properties**
 Incorporates 358 prison mesh, as featured in the LPS 1175 SR1 (A1) certified ProFence® range, specifically engineered to prevent finger access and climbing.
- A Size for Every Security Requirement**
 1.0m to 3.0m wide single leaf kits and 2.0m to 6.0m wide double leaf kits to ensure secure access solutions for both pedestrian and vehicle entry points.
- RoSPA Compliant Safety**
 RoSPA-compliant design with maximum 74.6 mm gaps and added mesh, exceeding the 89 mm safety guideline.
- BS 12604 Compliance**
 Also known as the three-hinge rule, all EnviroProtect® Anti-Climb gates feature a triple hinge design to ensure that, in the unlikely event of a single hinge failure, safety and security remain uncompromised.



Suitable For

- Schools
- Home & Residential
- Parks & Recreational Facilities
- Healthcare & Care Homes
- Retail Properties
- Transportation Hubs
- Residential Utility Sites
- Telecommunication Hubs

Specification

Heights	Available in 2.0m, 2.4m, and 3.0m above-ground heights.
Widths	Single leaf gates from 1.0m–3.0m wide; double leaf gates from 2.0m–6.0m.
Infill	Constructed from 25.4 mm Ø vertical bars at 100 mm centres, combined with heavy-duty 4 mm horizontal and vertical wires.
Posts	Hinge and catch posts range from 80x80x3mm to 200x200x5mm SHS.
Fixings	Supplied with SR1-rated hinges and anti-removal bolt system.
Finish	Powder coated to BS 13438 in the below colours as standard.
Installation	Suitable for dig-in or bolt-down install per O&M guidelines.

Colour Options Include:

Black RAL 9005 Green RAL 6005 Grey RAL 7037 Blue RAL 5010 Red RAL 3020 Yellow RAL 1023



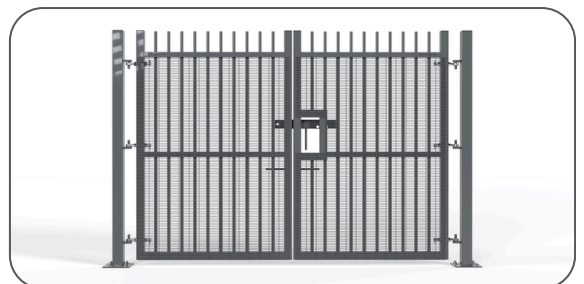
Secured by Design



EnviroProtect® Anti-Climb Gate Dig In Kit



EnviroProtect® Anti-Climb Bolt Down Kit



Call our Expert Sales Team for more information.

First Fence Ltd | Kiln Way, Woodville, South Derbyshire, DE11 8EA

01283 512 111 | www.firstfence.co.uk | sales@firstfence.co.uk



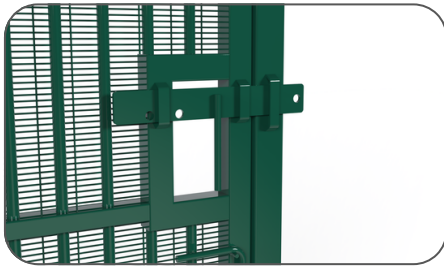
UK-QMS-00503-TEM

Hardware Explained

The EnviroProtect® Anti-Climb gate system is engineered for maximum security performance and requires the use of specified additional components to maintain full compliance with its LPS 1175 SR1 (A1) certification. All necessary components are supplied with every EnviroProtect® Anti-Climb gate kit to guarantee certified protection.

Integrated Slider Assembly

The gate incorporates a heavy-duty slider assembly, fully welded to the frame with reinforced baffles designed to resist tampering and distortion against attacks using concealable tools from Tool Kit A.



⦿ Ensures compliance with LPS 1175 SR1 (A1)

Anti-Tamper Approved Hinges

EnviroProtect® Anti-Climb gates feature innovative First Fence anti-tamper SR1 hinges, secured with through bolts at the eyebolt ends to prevent unauthorised removal.



⦿ Ensures compliance with LPS 1175 SR1 (A1)

Heavy Duty Locking Dropbolt

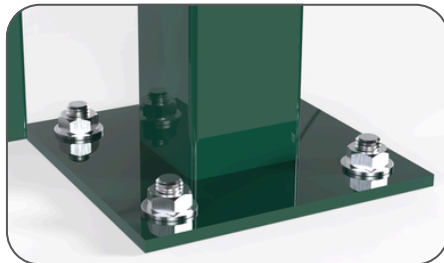
All gate leaves (excluding 1.2 m pedestrian gates) include a heavy-duty drop bolt to secure the gate in the open position. The LPS 1175 SR1 (A1) certification is achieved independently of these drop bolts.



✗ Not essential for LPS 1175 SR1 (A1) Compliance

Bolt Down Base Plates

EnviroProtect® Anti-Climb gates are available with an optional base plate, ideal for sites where excavation isn't possible or permitted. This allows for secure installation without the need for digging.



⦿ Ensures compliance with LPS 1175 SR1 (A1)

Dual Locking Options

The slider assembly permits dual locking or allows locking through either the primary or secondary gate leaf.



⦿ Ensures compliance with LPS 1175 SR1 (A1)

Corner Post Configured

Gates are approved for corner configurations with the EnviroProtect® Anti-Climb LPS 1175 SR1 (A1) railing panels and must be installed following the EnviroProtect® Anti-Climb O&M guidance.



⦿ Ensures compliance with LPS 1175 SR1 (A1)

Built for Seamless Integration

All EnviroProtect® Anti-Climb single and double gate leaves are engineered for secure standalone installation against solid substrates—such as walls in alleyways—or as part of the integrated EnviroProtect® Anti-Climb railing system with adjacent panels.

To ensure full LPS 1175 SR1 (A1) certification, a minimum compliant height of 1.8m must be maintained. This standard guarantees that any approved EnviroProtect® Anti-Climb gate can be securely paired with railing panels of varying heights, provided the 1.8m minimum is met.

EnviroProtect® Anti-Climb With Adjacent Railing Kit



Secured by Design



☎ Call our Expert Sales Team for more information.

First Fence Ltd | Kiln Way, Woodville, South Derbyshire, DE11 8EA
01283 512 111 | www.firstfence.co.uk | sales@firstfence.co.uk



UK-QMS-00503-TEM

Sizing and Sizes

EnviroProtect® Anti-Climb has been engineered to maximise security and structural integrity by specifying hinge and catch posts with dimensions precisely calculated according to the gate's height and width parameters.

Single Leaf Gate Sizes

All single leaf gate kits include a hinge post, catch post and all hanging hardware required for certified installation. The below sizes are the total gate excluding the hinge post size and hanging gap.

3.0m	✓	✓	✓	✓
2.4m	✓	✓	✓	✓
2.0m	✓	✓	✓	✓
	1.0m	1.2m	2.0m	3.0m

Double Leaf Gate Sizes

All double leaf gate kits include hinge posts and all hanging hardware required for certified installation. The below sizes are the total gate excluding the hinge post size and hanging gap.

3.0m	✓	✓	✓	✓	✓
2.4m	✓	✓	✓	✓	✓
2.0m	✓	✓	✓	✓	✓
	2.0m	3.0m	4.0m	5.0m	6.0m

Post Calculation Table

Hinge post sizes for both single and double leaf gates (note this is for each gate leaf not the complete gate size for doubles).

EnviroProtect® Anti-Climb Hinge Post Sizes		Single Leaf Gate Kits				Double Leaf Gate Kits				
Gate Width:		1.0m	1.2m	2.0m	3.0m	2.0m	3.0m	4.0m	5.0m	6.0m
Gate Height:	3.0m	80x80x3mm	80x80x3mm	100x100x3mm	100x100x3mm	80x80x3mm	80x80x3mm	100x100x3mm	100x100x3mm	100x100x3mm
	2.4m	80x80x3mm	80x80x3mm	100x100x3mm	100x100x3mm	80x80x3mm	80x80x3mm	100x100x3mm	100x100x3mm	100x100x3mm
	2.0m	80x80x3mm	80x80x3mm	100x100x3mm	100x100x3mm	80x80x3mm	80x80x3mm	100x100x3mm	100x100x3mm	100x100x3mm

Padlocks Compliant with LPS 1175 SR1 (A1) for EnviroProtect® Anti-Climb Gates

The approved range of padlocks listed below must be used as the sole locking mechanism for all certified EnviroProtect® Anti-Climb gates. The use of any padlocks outside this specification will invalidate the gate's certification and compromise its LPS 1175 security rating.

Approved Locking Padlocks

Squire SS50S



Compact and tough, ideal for space-limited applications with strong resistance to forced attacks.

Squire SS50CS



Closed shackle for added protection against cutting and prying in exposed environments.

Squire SS65S



Mid-size, high-security padlock with corrosion resistance for demanding outdoor use.

Squire SS65CS



Closed shackle version of the SS65, offering enhanced physical attack resistance.

Squire SS80S



Heavy-duty CEN 6-rated padlock for high-risk sites needing maximum security.

 Call our Expert Sales Team for more information.

First Fence Ltd | Kiln Way, Woodville, South Derbyshire, DE11 8EA
01283 512 111 | www.firstfence.co.uk | sales@firstfence.co.uk



UK-QMS-00503-TEM