



Secured by Design



Police Preferred Specification



 Call our Expert Sales Team for more information.

First Fence Ltd | Kiln Way, Woodville, South Derbyshire, DE11 8EA
01283 512 111 | www.firstfence.co.uk | sales@firstfence.co.uk



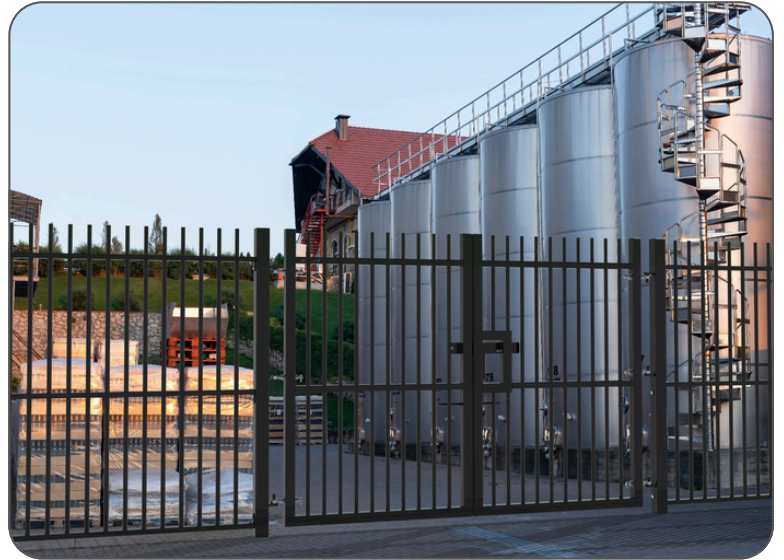
UK-QMS-00503-TEM

High-Security Railing Gates Certified to LPS 1175 SR1 (A1)

The EnviroProtect® gate system is certified to LPS 1175 SR1 (A1), providing secure access while integrating seamlessly with the EnviroProtect® railing range. It delivers high-level protection with a 98% reduction in CO₂ emissions compared to traditional welded panels. All components are LPCB-tested and certified to ensure full system compliance and security integrity.

Key Features

- LPS 1175 SR1 A1 Certified**
 Independently tested and certified to resist opportunistic and experienced attacks using a range of manual and concealable tools.
- Minimal Weld Design**
 Our patented non-welded system is tested and certified to LPS 1175, with welding used only at the frame joints to enhance structural integrity.
- A Size for Every Security Requirement**
 1.0m to 3.0m single leaf kits and 2.0m to 6.0m double leaf kits to ensure secure access solutions for both pedestrian and vehicle entry points.
- RoSPA Compliant Safety**
 RoSPA-compliant anti-head entrapment design, featuring a 74.6mm daylight gap between rails—surpassing RoSPA's recommended maximum of 89mm.
- BS 12604 Compliance**
 Also known as the three-hinge rule, all EnviroProtect® gates feature a triple hinge design to ensure that, in the unlikely event of a single hinge failure, safety and security remain uncompromised.



Suitable For

- Schools
- Home & Residential
- Parks & Recreational Facilities
- Healthcare & Care Homes
- Retail Properties
- Transportation Hubs
- Residential Utility Sites
- Telecommunication Hubs

Specification

Heights	Available in 2.0m, 2.4m, and 3.0m above-ground heights.
Widths	Single leaf gates from 1.0m–3.0m wide; double leaf gates from 2.0m–6.0m.
Infill	Constructed from 25.4mm Ø vertical bars at 100mm centres.
Posts	Hinge and catch posts range from 80x80x3mm to 200x200x5mm SHS.
Fixings	Supplied with SR1-rated hinges and anti-removal bolt system.
Finish	Powder coated to BS 13438 in the below colours as standard.
Installation	Suitable for dig-in or bolt-down install per O&M guidelines.

Colour Options Include:

Black RAL 9005 Green RAL 6005 Grey RAL 7037 Blue RAL 5010 Red RAL 3020 Yellow RAL 1023



EnviroProtect® Gate Dig In Kit



EnviroProtect® Gate Bolt Down Kit



☎ Call our Expert Sales Team for more information.

First Fence Ltd | Kiln Way, Woodville, South Derbyshire, DE11 8EA

01283 512 111 | www.firstfence.co.uk | sales@firstfence.co.uk



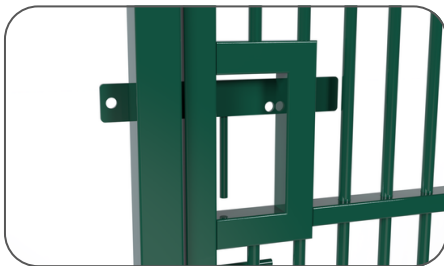
UK-QMS-00503-TEM

Hardware Explained

The EnviroProtect® gate system has been developed for optimal performance; as such, the use of additional components is required to ensure full compliance with its LPS 1175 SR1 (A1) certification. All components are supplied with each EnviroProtect® gate kit.

Integrated Slider Assembly

The gate features a heavy-duty slider assembly, fully welded to the frame using reinforced baffles to prevent tampering and distortion during attempted attacks with concealable tools from Tool Kit A.



ⓘ Ensures compliance with LPS 1175 SR1 (A1)

Anti-Tamper Approved Hinges

EnviroProtect® gates utilise the innovative First Fence anti-tamper SR1 hinges, secured with through bolts at the end of the eyebolt hinge to prevent unauthorised removal.



ⓘ Ensures compliance with LPS 1175 SR1 (A1)

Heavy Duty Locking Dropbolt

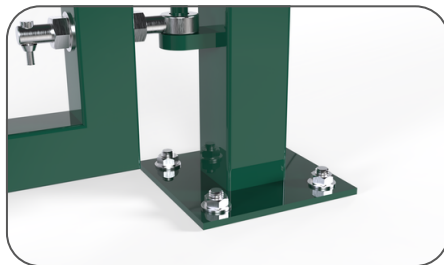
All gate leaves (except 1.2m pedestrian gates) include a heavy-duty drop bolt designed to secure the gates in the open position. LPS 1175 SR1 (A1) certification was achieved without relying on the drop bolts.



✗ Not essential for LPS 1175 SR1 (A1) Compliance

Base Plate Options

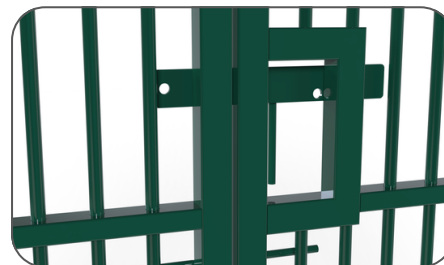
For sites where excavation is not feasible or allowed, the EnviroProtect® system is available in a bolt-down variation. This provides a secure installation method without disturbing the ground, making it ideal for developed or sensitive locations.



ⓘ Ensures compliance with LPS 1175 SR1 (A1)

Dual Locking Options

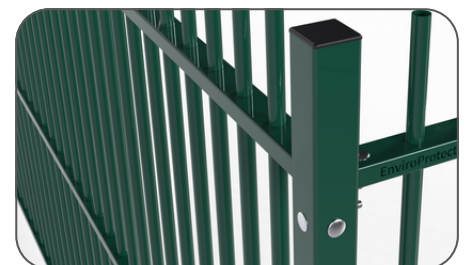
The slider assembly allows for dual locking or enables the user to lock through either the primary or secondary gate leaf.



ⓘ Ensures compliance with LPS 1175 SR1 (A1)

Corner Post Configured

Gates are approved for use in corner configurations with the EnviroProtect® LPS 1175 SR1 (A1) railing panel range and must be installed in accordance with the EnviroProtect® O&M guidance.



ⓘ Ensures compliance with LPS 1175 SR1 (A1)

Built for Seamless Integration

All EnviroProtect® single and double gate leaves are designed for standalone installation against solid substrates, such as walls in alleyways, or as part of the wider EnviroProtect® railing system with adjacent panels.

Please note, to maintain LPS 1175 SR1 (A1) certification, the minimum compliant height is 1.8m. This allows any approved EnviroProtect® gate height to be paired with railing panels of varying heights, provided the 1.8m minimum is met.

EnviroProtect® With Adjacent Railing Kit



Secured by Design



☎ Call our Expert Sales Team for more information.

First Fence Ltd | Kiln Way, Woodville, South Derbyshire, DE11 8EA
01283 512 111 | www.firstfence.co.uk | sales@firstfence.co.uk



UK-QMS-00503-TEM

Sizing and Sizes

EnviroProtect® has been engineered to maximise security and structural integrity by specifying hinge and catch posts with dimensions precisely calculated according to the gate's height and width parameters.

Single Leaf Gate Sizes

All single leaf gate kits include a hinge post, catch post and all hanging hardware required for certified installation. The below sizes are the total gate excluding the hinge post size and hanging gap.

3.0m	✓	✓	✓	✓
2.4m	✓	✓	✓	✓
2.0m	✓	✓	✓	✓
	1.0m	1.2m	2.0m	3.0m

Double Leaf Gate Sizes

All double leaf gate kits include hinge posts and all hanging hardware required for certified installation. The below sizes are the total gate excluding the hinge post size and hanging gap.

3.0m	✓	✓	✓	✓	✓
2.4m	✓	✓	✓	✓	✓
2.0m	✓	✓	✓	✓	✓
	2.0m	3.0m	4.0m	5.0m	6.0m

Post Calculation Table

Hinge post sizes for both single and double leaf gates (note this is for each gate leaf not the complete gate size for doubles).

EnviroProtect® Hinge Post Sizes		Single Leaf Gate Kits				Double Leaf Gate Kits				
Gate Width:		1.0m	1.2m	2.0m	3.0m	2.0m	3.0m	4.0m	5.0m	6.0m
Gate Height:	3.0m	80x80x3mm	80x80x3mm	100x100x3mm	100x100x3mm	80x80x3mm	80x80x3mm	100x100x3mm	100x100x3mm	100x100x3mm
	2.4m	80x80x3mm	80x80x3mm	100x100x3mm	100x100x3mm	80x80x3mm	80x80x3mm	100x100x3mm	100x100x3mm	100x100x3mm
	2.0m	80x80x3mm	80x80x3mm	100x100x3mm	100x100x3mm	80x80x3mm	80x80x3mm	100x100x3mm	100x100x3mm	100x100x3mm

Padlocks Compliant with LPS 1175 SR1 (A1) for EnviroProtect® Gates

The approved range of padlocks listed below must be used as the sole locking mechanism for all certified EnviroProtect® gates. The use of any padlocks outside this specification will invalidate the gate's certification and compromise its LPS 1175 security rating.

Approved Locking Padlocks

Squire SS50S



Compact and tough, ideal for space-limited applications with strong resistance to forced attacks.

Squire SS50CS



Closed shackle for added protection against cutting and prying in exposed environments.

Squire SS65S



Mid-size, high-security padlock with corrosion resistance for demanding outdoor use.

Squire SS65CS



Closed shackle version of the SS65, offering enhanced physical attack resistance.

Squire SS80S



Heavy-duty CEN 6-rated padlock for high-risk sites needing maximum security.

 Call our Expert Sales Team for more information.

First Fence Ltd | Kiln Way, Woodville, South Derbyshire, DE11 8EA
01283 512 111 | www.firstfence.co.uk | sales@firstfence.co.uk



UK-QMS-00503-TEM