



Raising Standards
Advancing Safety

 Call our Expert Sales Team for more information

First Fence Ltd | Kiln Way, Woodville, South Derbyshire, DE11 8EA

01283 512 111 | www.firstfence.co.uk | sales@firstfence.co.uk

Key Features

- ✓ **Safety**
(Compliant with BS EN 12453 standards for automatic gate safety)
- ✓ **Bi-Fold Gate**
(No need to plan for swing radius)
- ✓ **Corrosion Resistant**
(Galvanised and PPC to ISO and BS EN standards)
- ✓ **System-Based Solution**
(RapidFold™ gates form a system of elements for access control)

Suitable For

- ✓ Industrial Buildings
- ✓ Airports & Ports
- ✓ Schools & Nurseries
- ✓ Guarded Car Parks
- ✓ Residential



Safety

Automated RapidFold™ gates comply with BS EN 12453 standards for gate safety.



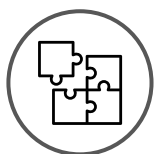
Corrosion Resistant

RapidFold™ gates are hot-dip galvanised and polyester paint coated to secure against corrosion.



Bi-Fold Gate Design

The RapidFold™ gate is a bi-fold gate. The leaf is designed to fold in the middle, allowing for a more efficient use of space. The gate does not contact the floor.



System-Based Solution

These gates form a system of elements for access control. When used together with industrial segments, mesh panels, posts, and gates, they form a complete system.

Specifications

Material	Galvanised steel (ISO 1461)
Infill	Vertical bar or 868 twin mesh
Finish	Polyester powder coated (BS EN 13438)
Colour	A range of RAL colours is available
Post Type	Bolt Down

Optional Extras



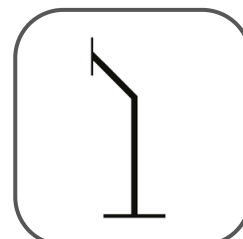
AES OPYN-4G GSM Video Intercom



Videx GSM4KCR-1S/4GE-M Intercom



Optex OVS-02GT Above Ground Vehicle Detection Sensor



GNP-1C Car Height Goose Neck Intercom Post

What's Included:

- Bolt down posts (2x)
- Cat 3 Safety Edges (2x)
- Wireless Safety Edge Transmission System
- Photocells (1 pair)
- Flush Mounted Keyswitch & ES Button
- Flashing light
- Remote Operation Fobs (2x)
- Control Panel (Post Mounted)
- Mechanical Roller Guide System (Electromagnetic Lock on gates over 2.5m wide)



Call our Expert Sales Team for more information

First Fence Ltd | Kiln Way, Woodville, South Derbyshire, DE11 8EA

01283 512 111

| www.firstfence.co.uk

| sales@firstfence.co.uk

Hardware Explained

The RapidFold™ gate system is designed for efficiency and ease. These gate systems come ready to install, with all components supplied with each RapidFold™ gate kit.

Infill Options

These gates have the option of either 868 twin mesh, or a 25mm vertical bar infill, in order to fulfil more needs and purposes.



☑ Ensures compliance with BS EN 12453

Centre Fold Hinges

All RapidFold™ Gates have a centre hinge to allow the gate leaf to fold, rather than swing, making these gates much more space-efficient.



☑ Ensures compliance with BS EN 12453

Beninca Premier 24v

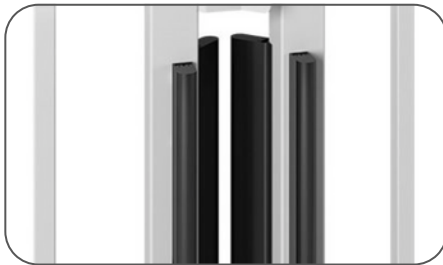
The RapidFold™ gate systems use this geared motor intended for heavy usage, ensuring high performance over repeated openings.



☑ Ensures compliance with BS EN 12453

Safety Edges

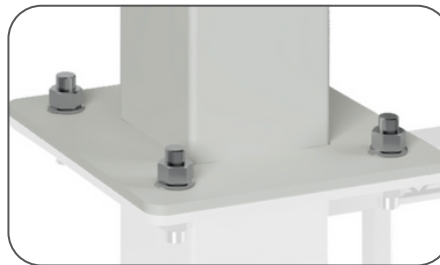
Avoid damage or injury with these category 3 safety edges, pre-installed for convenience and protection.



☑ Ensures compliance with BS EN 12453

Bolt Down Posts

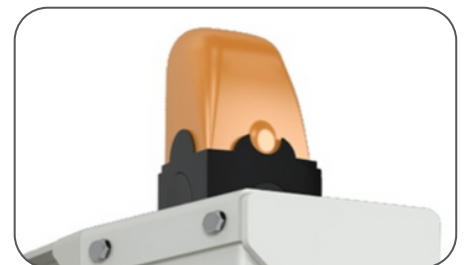
These gates come with posts already attached and ready to bolt down using 4 M20 ground anchor bolts per post (supplied separately).



☑ Ensures compliance with BS EN 12453

Warning Light

Pre-installed safety light flashes orange when gate is moving, to warn anywhere nearby to steer clear of moving parts.



☑ Ensures compliance with BS EN 12453

Heights & Colours

Gate Height (meters)	2.5	✓	✓	✓	✓	✓	✓	✓	
	2.4	✓	✓	✓	✓	✓	✓	✓	
	2.3	✓	✓	✓	✓	✓	✓	✓	
	2.2	✓	✓	✓	✓	✓	✓	✓	
	2.1	✓	✓	✓	✓	✓	✓	✓	
	2.0	✓	✓	✓	✓	✓	✓	✓	
		1.5	1.75	2.0	2.25	2.5	2.75	3.0	
		Gate Width (meters)							

Available in standard RAL colours. Custom colours are available on request, as is a galvanised-only option

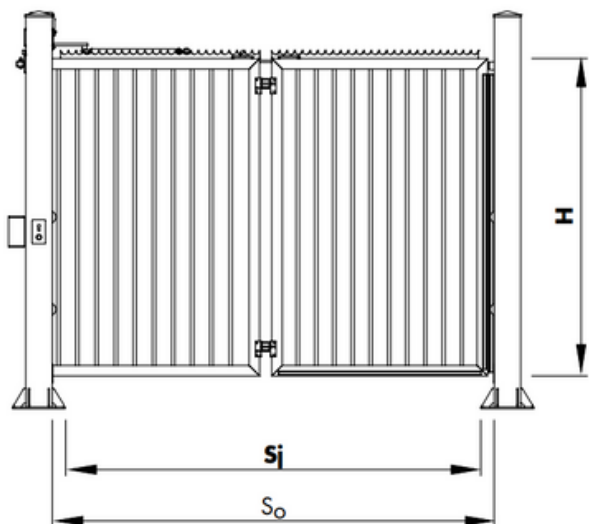


☎ Call our Expert Sales Team for more information

First Fence Ltd | Kiln Way, Woodville, South Derbyshire, DE11 8EA

01283 512 111 | www.firstfence.co.uk | sales@firstfence.co.uk

Sizing



S_j - clear passage (ordering size);

S_o - distance between posts;

H - leaf height (ordering size)

Ordered gate width (S_j) (clear entry width)	Gate height (mm) [H]	Width between posts (mm)	Leaf height from the ground (mm)	Post dimensions	Post height	Required space (without cabinet)	Required space (with cabinet)
1500-3000mm	2000	$S_j + 230$	$H_o + 100$	160x160	2150	$S_j + 950$	$S_j + 1100$
	2100	$S_j + 230$	$H_o + 100$	160x160	2150	$S_j + 950$	$S_j + 1100$
	2200	$S_j + 230$	$H_o + 100$	160x160	2150	$S_j + 950$	$S_j + 1100$
	2300	$S_j + 230$	$H_o + 100$	160x160	2150	$S_j + 950$	$S_j + 1100$
	2400	$S_j + 230$	$H_o + 100$	160x160	2150	$S_j + 950$	$S_j + 1100$
	2500	$S_j + 230$	$H_o + 100$	160x160	2150	$S_j + 950$	$S_j + 1100$



Trade Installer?

Speak to our Sales Team about Trade Pricing on our Specialist Gates & Automation



Call our Expert Sales Team for more information

First Fence Ltd | Kiln Way, Woodville, South Derbyshire, DE11 8EA

01283 512 111

| www.firstfence.co.uk

| sales@firstfence.co.uk