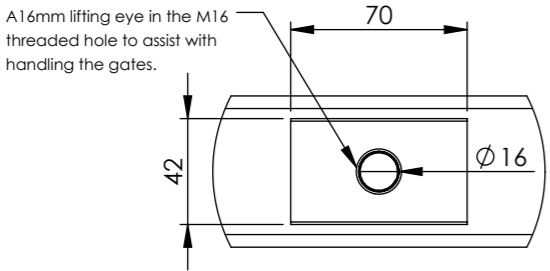
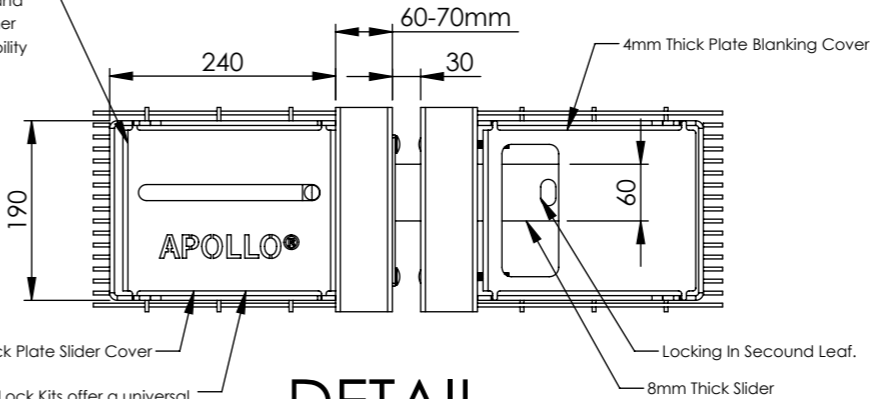


DO NOT SCALE DRAWING



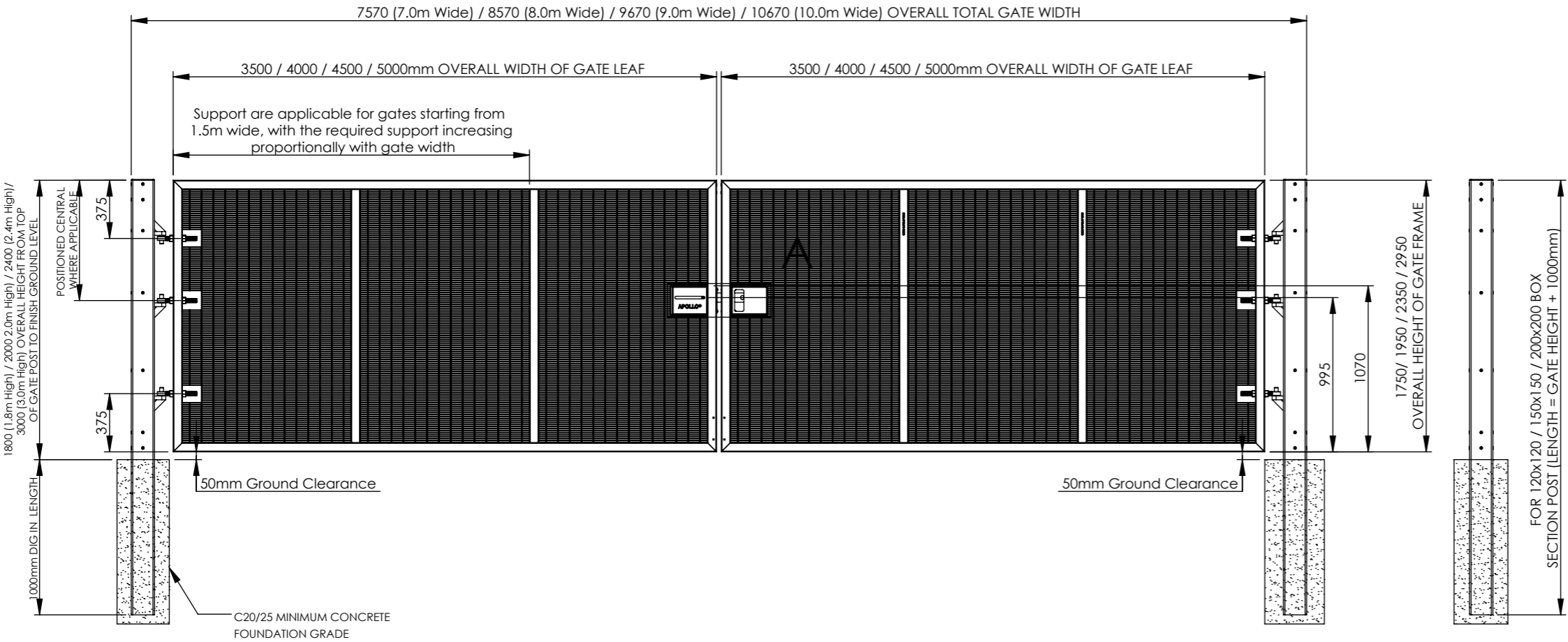
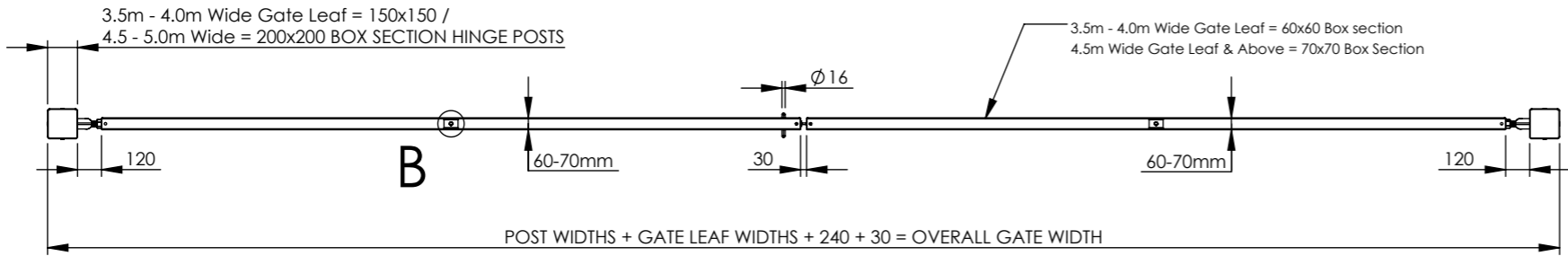
DETAIL B

Thanks to the centrally welded mesh and the ability to mount the lock kit on either side, these kits provide maximum flexibility for various gate configurations.



DETAIL A

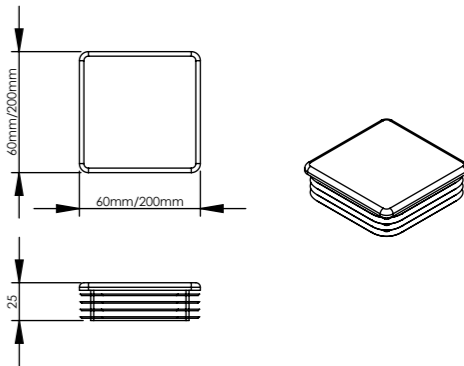
The Apollo HD Lock Kits offer a universal solution for gate installations, allowing both right-hand and left-hand hanging.



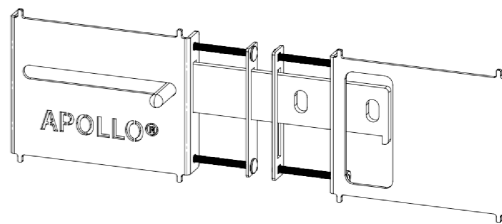
Notes:

1. All materials to be mild steel and conform to relevant British standards.
2. All items to be pre-galvanised to BS EN 10346 or hot dip galvanised to ISO 1461.
3. Items can be powder coated on request, powder coating to : BS EN 13438
4. installation via R.A.M.S

ALL GATES & POSTS ARE TO BE FITTED WITH BLACK PLASTIC INSERTS



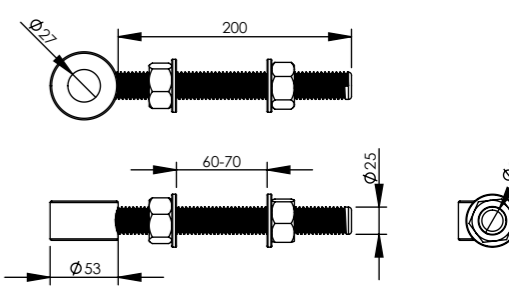
ALL HD GATES TO COME WITH DOUBLE APOLLO HD SLIDE BOLT KIT



ACCS-GATE-2150 - FIRSTFENCE HD SLIDE BOLT KIT FOR DOUBLE LEAF GATES

Other Lock Kits are available on request (Click here for more information)

All gates come with 25mm Eye Bolts. Hinge posts are to be fitted with 3 x M25 eye bolts.



REV		DESCRIPTION	DATE
1		FirstFence® HIRE & SALES	
2		APOLLO® HD 358	
3		APOLLO® HD 358 1.8m x 3.0m High - 7.0m x 10.0m WIDE DOUBLE LEAF DIG IN GATE KIT RANGE DRAWING	
4		SCALE: N/A	SHEET 1 OF 2

NAME	DATE
W.P	17/09/2025
APV'D	
Tolerance	0 - 50mm ± 0.2mm > 50 - 500mm ± 1mm > 1000mm ± 3mm
Material	Steel
WEIGHT	N/A

Third Angle Projection	REV A
	A3

