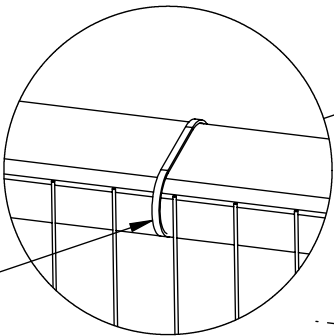


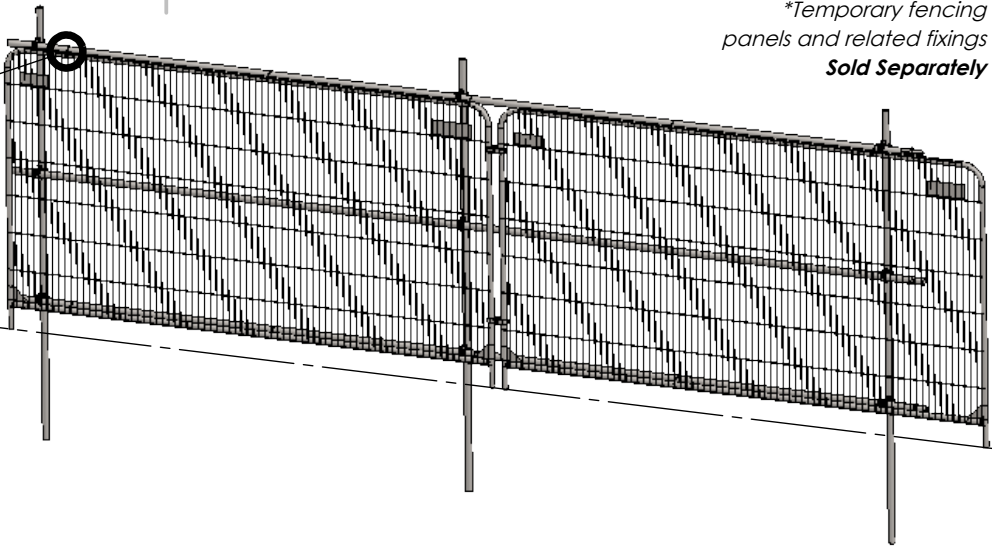
DO NOT SCALE DRAWING

Linking Cables - used to fix the Tempory Fencing Panels to the scaffolding frame (Packs sold separately)

Refer to assembly guide for more details

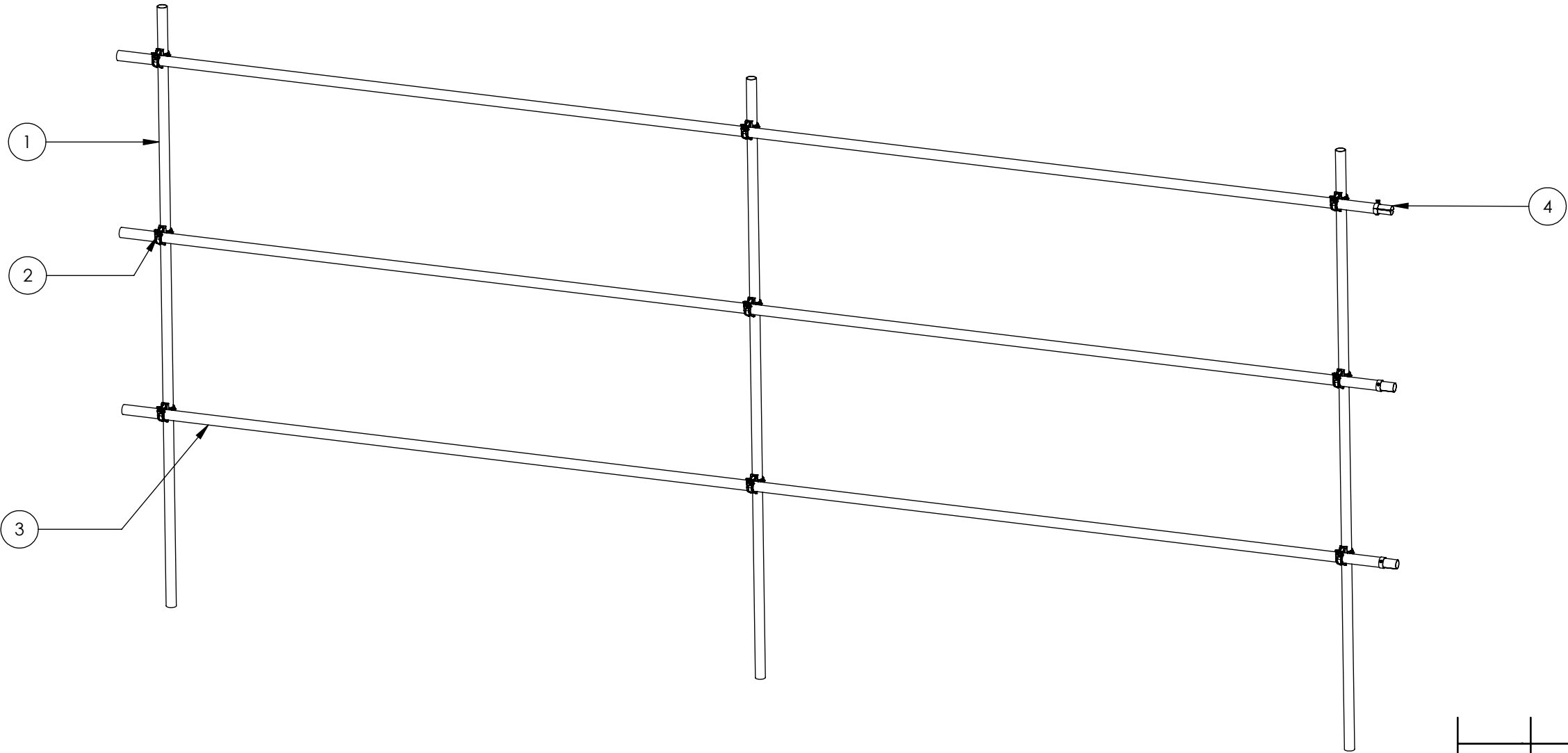


Ground Line





Notes:

- 1. Ensure all couplers are fully tightened and checked before use.
- 2. All tubes must be free from damage, excessive corrosion, and deformation prior to assembly.
- 3. Use scaffolding joint pins where indicated to securely join tubes.
- 4. Bracing must be properly installed to maintain structural integrity.
- 5. Refer to assembly instructions for proper orientation and installation sequence.
- 6. Ensure vertical uprights are plumb and securely anchored as required.
- 7. Regularly inspect structure during use, particularly after adverse weather conditions.
- 8. All burrs and sharp edges must be removed prior to installation.



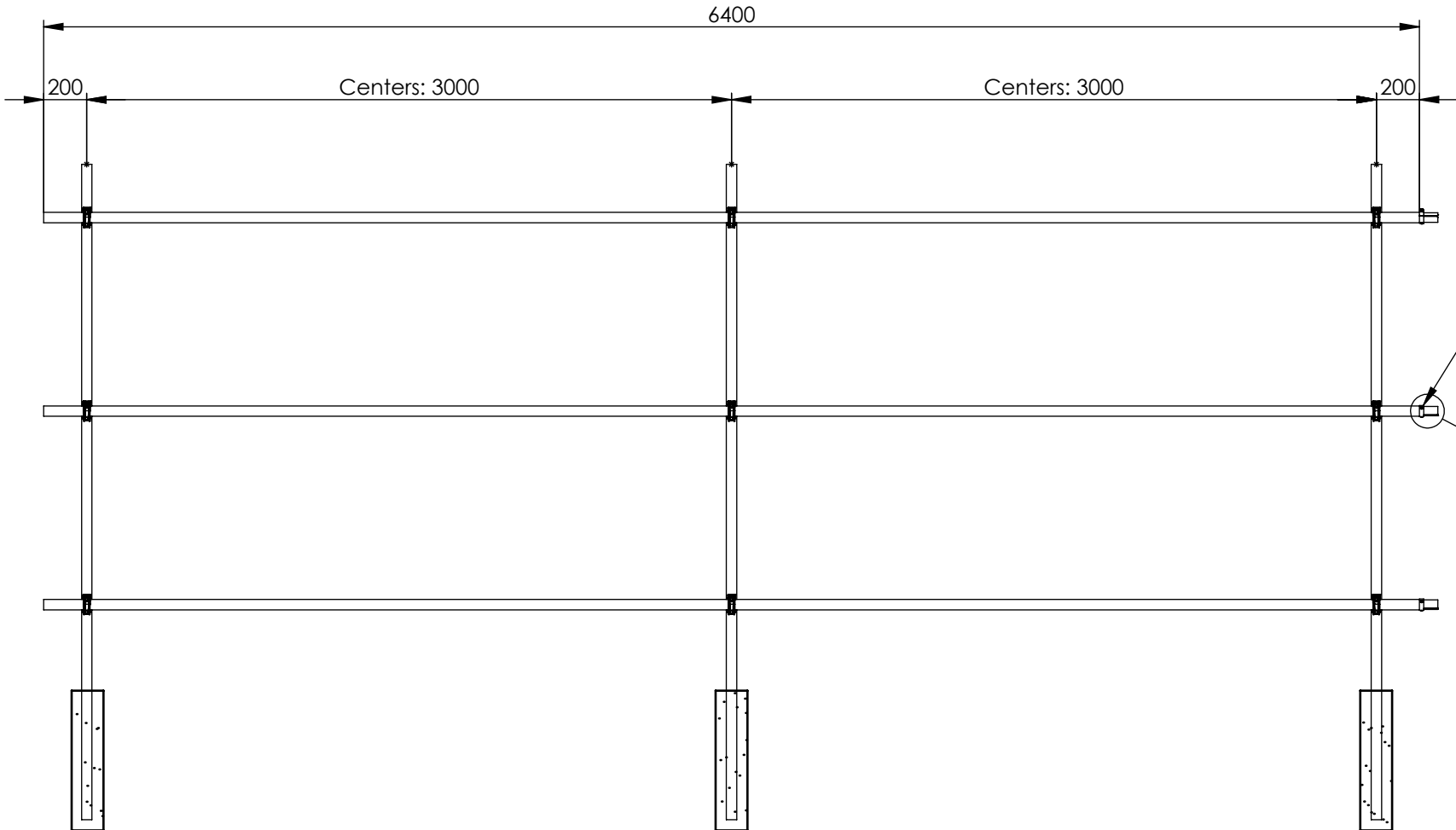
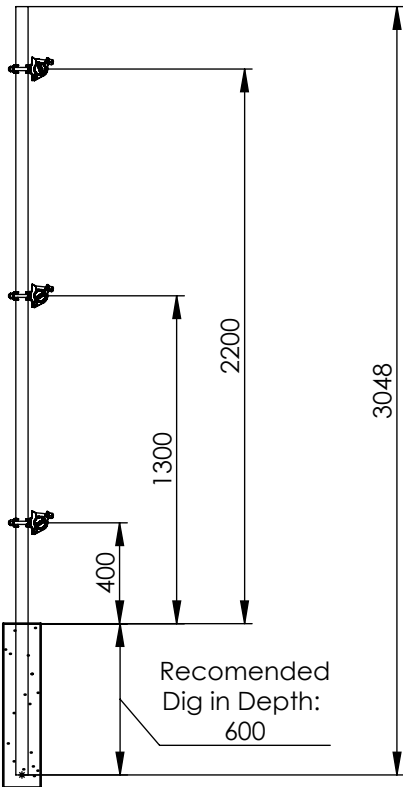
Item	Component Name	Qty
1	SCAF-TUB-1010 - 10ft SCAFFOLDING TUBE	3
2	SCAF-FIX-0003 - SWIVEL COUPLER	9
3	SCAF-TUB-1021 - 21ft SCAFFOLDING TUBE	3
4	SCAF-FIX-0019 - SCAFFOLDING JOINT PIN	3

		NAME	DATE		
DRAWN		CS	29/07/2025		
APV'D		AP_IP0407		SKU: TREE-KIT-0020	
Tolerance	0 - 50mm		± 0.2mm		
	> 50 - 500mm		± 1mm		
	> 1000mm		± 3mm		
		Third Angle Projection		TITLE: FirstShield Tree Protection Temporary Panel Frame Kit 6.4m Wide - No Brace	
Material: STEEL					
WEIGHT: 111.9kg		SCALE: 1:25		REV A	
				SHEET 1 OF 2	
				A3	

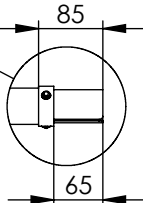
DO NOT SCALE DRAWING



Notes:

1. Vertical scaffolding poles to be embedded 600mm into the ground at 3.0m intervals (BS 5837)
2. Assembly and positioning are indicative; Installer discretion advised



Joint Pin - Allows multiple bays to be assembled in one continuous run



		REV	DESCRIPTION	DATE
		<div>First Fence® — HIRE & SALES —</div>		
DRAWN		NAME	DATE	
CS			29/07/2025	
APVD		AP_TP0407		
Tolerance	0 - 50mm	± 0.2mm		
	> 50 - 500mm	± 1mm		
	>1000mm	± 3mm		
		SKU:	TREE-KIT-0020	
		Third Angle Projection		
Material:		STEEL		REV
		FirstShield Tree Protection Temporary Panel Frame Kit 6.4m Wide - No Brace		A
WEIGHT:		111.9kg		A3
		SCALE:	1:30	SHEET 2 OF 2