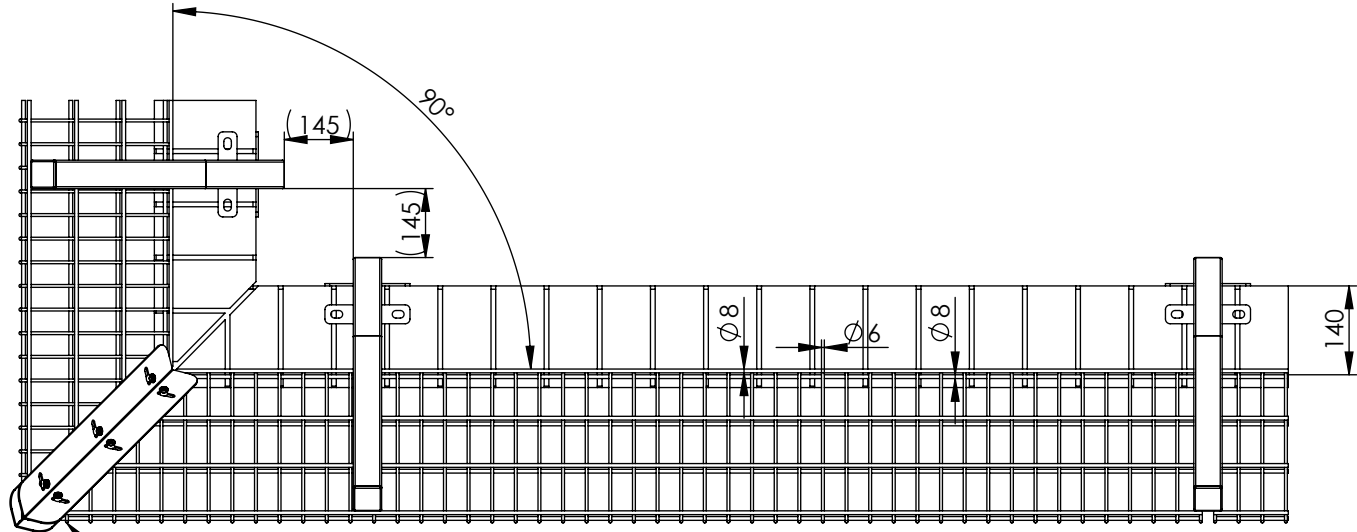
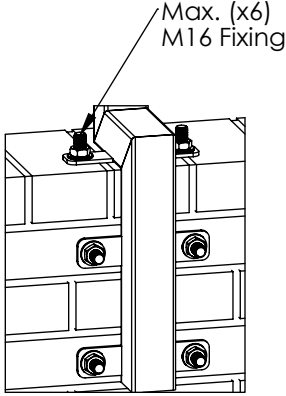
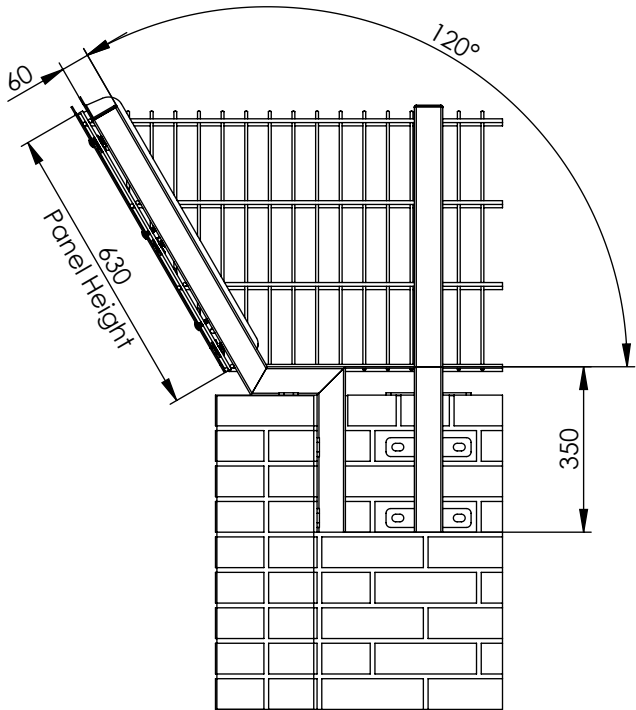
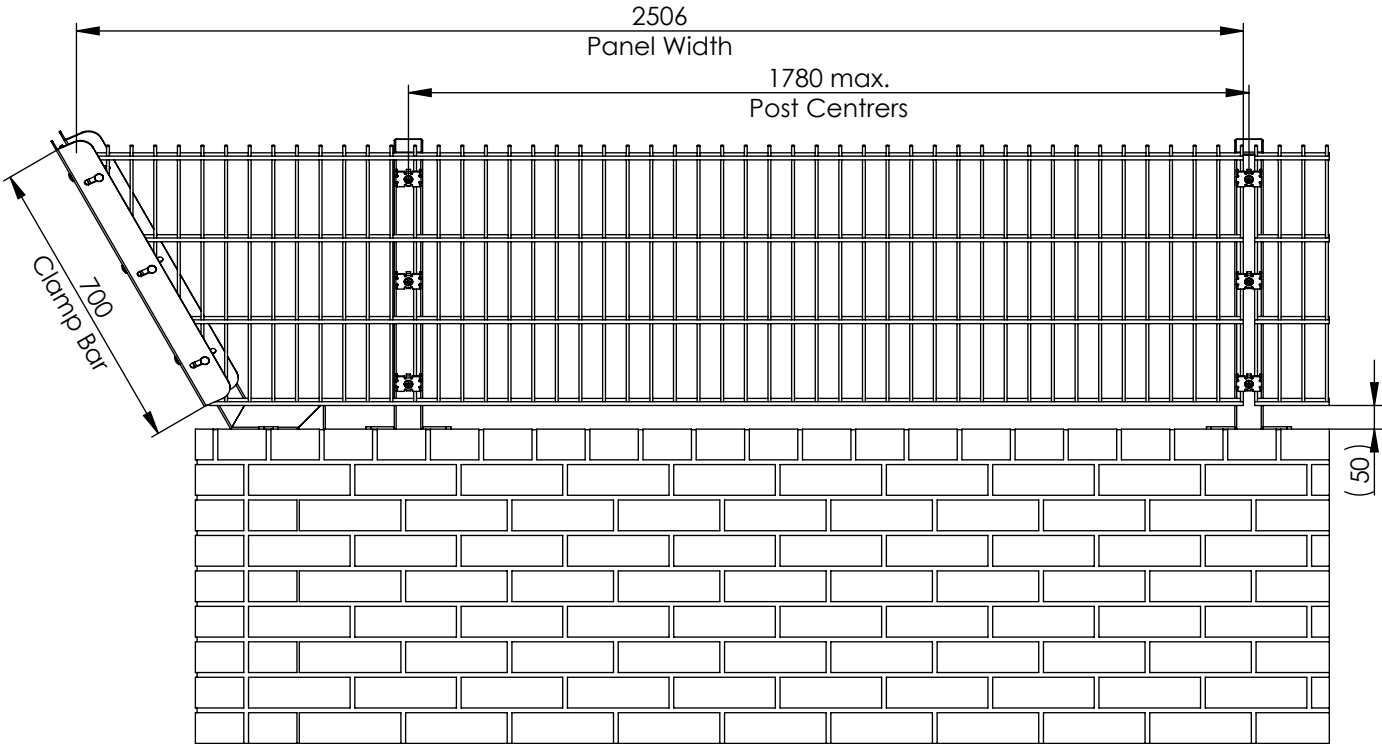


DO NOT SCALE DRAWING

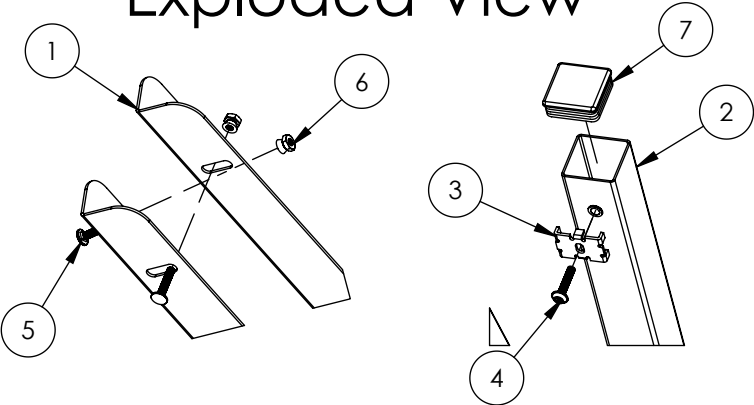


Mesh panels from the intermediate fencing kit are to be cut on site to suit the desired installation position.


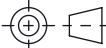


Fixing Method View

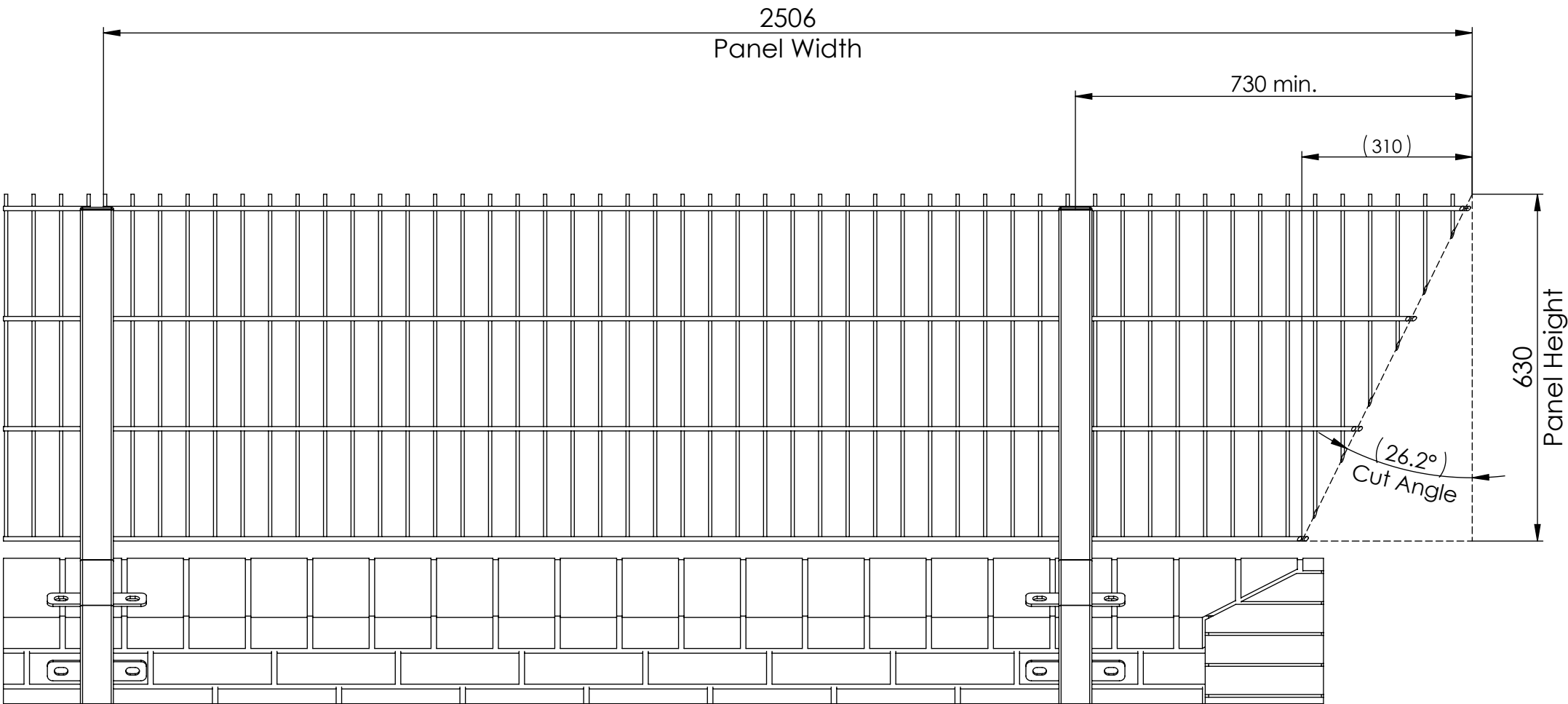
Exploded View



Item	Component Name	Qty
1	MESH-TOP-0050 - FOLDED CORNER CLAMP BAR 700mm LONG	2
2	MESH-TOP-0640 - 0.6m HIGH 60 DEGREE CRANK 60X60 INTERMEDIATE POST ONLY	2
3	ACCS-MSH-0010 - 868 MESH FENCING BLACK FIXING CLIPS	6
4	ACCS-MSH-0050 - M8 x 40mm MESH SECURITY BOLT	6
5	ACCS-CLA-0180 - M8 x 40mm CUP HEAD GALVANISED BOLTS	6
6	ACCS-PAL-0003 - M8 SNAP OFF NUT FOR SECURITY BOLTS	6
7	ACCS-RIB-0003 - 60x60 BLACK RIBBED INSERTS	2

		REV	DESCRIPTION	DATE
		<div>First Fence® HIRE & SALES</div>		
DRAWN		NAME L.T	DATE 21/05/2025	
APV'D				
Tolerance	0 - 50mm	± 0.2mm		
	> 50 - 500mm	± 1mm		
	>1000mm	± 3mm		
		SKU:	MESH-TOP-KIT-0660	
		TITLE:		REV
Material: N/A		0.6m HIGH 60 DEGREE CRANK WALL-MOUNTED 868 MESH CORNER POST KIT		A
WEIGHT: N/A		SCALE: 1:20		A3
		SHEET 1		OF 2

DO NOT SCALE DRAWING



- Notes:
- This model is based on a common bond pattern used in bricklaying.
 - When bolting posts to a wall—the type of fixing you use depends on the wall material (brick, concrete, etc.), the load involved, and the environment (indoor vs. outdoor). Here are some common fixings.
Sleeve Anchors / Through Bolts
Ideal for heavy-duty applications.
Expansion anchor that grips into concrete or brick.
Common for structural posts and outdoor use.
Shield Anchors (Rawl Bolts)
Good for solid masonry walls.
Expand when tightened to provide a strong hold.
Chemical Anchors (Resin Fixings)
High load capacity.
Resin is injected into a drilled hole, then a threaded rod or rebar is inserted.
Best for irregular, hollow, or old brickwork.
Tips
Always check wall condition first—crumbling mortar or hollow bricks need special care.
Use a spirit level to ensure vertical alignment.
Use corrosion-resistant hardware (e.g., galvanized or stainless steel) for outdoor use.


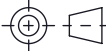
Recommended Method for Trimming Mesh Panels at Corners:

Measure and Mark Precisely:
Accurately measure and mark the mesh panel to ensure a proper fit at the corner junction.

Cut to Size:
Trim the panel using suitable cutting tools (e.g., angle grinder). Ensure cuts are clean and straight.

Treat Cut Edges:
Smooth any rough or sharp edges, and apply a protective coating (such as cold galvanizing spray) to prevent corrosion.

Align and Secure:
Position trimmed panels to form the corner, and fasten using appropriate hardware like corner clamp bars.

		REV		DESCRIPTION		DATE			
NAME		DATE		<div> HIRE & SALES</div>					
DRAWN		L.T						21/05/2025	
APVD									
Tolerance	0 - 50mm	± 0.2mm		SKU: MESH-TOP-KIT-0660					
	> 50 - 500mm	± 1mm							
	>1000mm	± 3mm							
<div>Third Angle Projection</div>				TITLE:					
Material: N/A				0.6m HIGH 60 DEGREE CRANK WALL-MOUNTED 868 MESH CORNER POST KIT					
WEIGHT: N/A				SCALE: 1:20		REV A A3			
				SHEET 2		OF 2			