

## Key Features

- ✓ **Strength**  
(These bollards have a thick galvanised steel or stainless steel wall)
- ✓ **Unobtrusive**  
(These bollards fully retract when not in use)
- ✓ **Corrosion Resistant**  
(Hot dip galvanised to ISO 1461 standards)
- ✓ **Variety**  
(Comes in a range of heights, diameters, and colours to suit the installer)

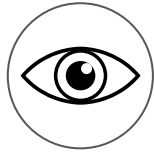
## Suitable For

- ✓ **Private driveways**
- ✓ **Commercial car parks**
- ✓ **Pedestrian zones**
- ✓ **Emergency access routes**
- ✓ **Warehouse entrances**



### Versatile

This range includes various heights, materials, diameters, and finishes to fit as many scenarios as possible.



### Unobtrusive

These bollards can fully retract and lock in place when not in use, so they won't be in the way



### Corrosion Resistant

These bollards are hot-dip galvanised or a stainless steel finish for added protection



### Long Lasting

Our products are designed to be long-lasting and robust, offering reliable performance when installed and used correctly.

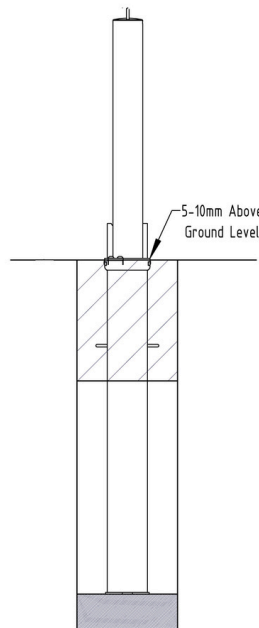
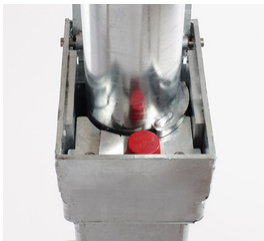
## Specifications

Height  
500mm  
745mm  
900mm

Wall thickness  
2mm (stainless steel)  
3mm - 5mm (galvanised)

Weight  
12kg - 68kg

Post Type  
Dig in



Material  
Galvanised steel (ISO 1461)  
Stainless steel

Colour  
Black - RAL 90057  
Yellow - RAL 1023

Diameters  
60mm  
76mm  
90mm  
101mm  
114mm  
139mm  
168mm  
193mm

Bollard Type  
With lift assist or without lift assist

 Call our Expert Sales Team for more information

First Fence Ltd | Kiln Way, Woodville, South Derbyshire, DE11 8EA  
01283 512 111 | [www.firstfence.co.uk](http://www.firstfence.co.uk) | [sales@firstfence.co.uk](mailto:sales@firstfence.co.uk)

Bristol | Canvey | Glasgow | Nottingham | Tipton