

DO NOT SCALE DRAWING

F

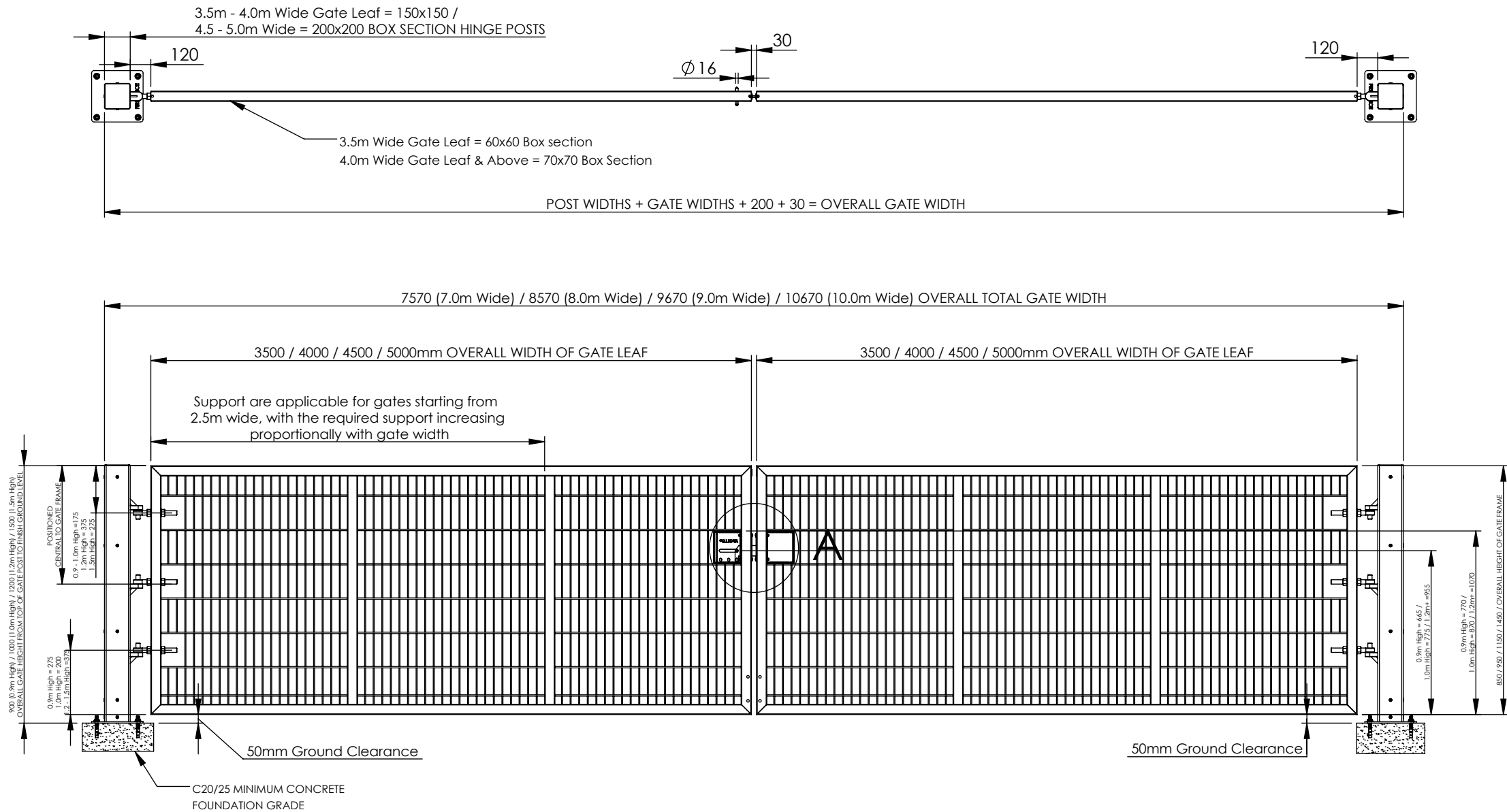
E

D

C

B

A



B

A

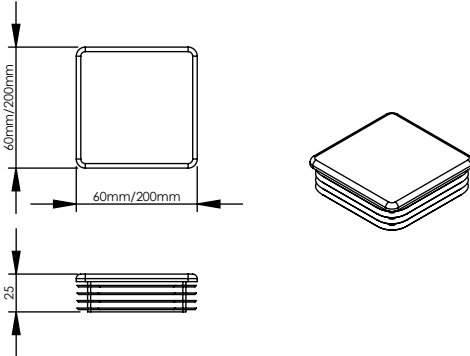
DETAIL A

DETAIL B

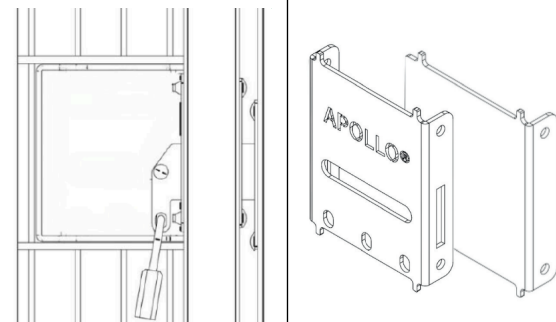
Notes:

1. All materials to be mild steel and conform to relevant British standards.
2. All items to be pre-galvanised to BS EN 10346 or hot dip galvanised to ISO 1461.
3. Items can be powder coated on request, powder coating to : BS EN 13438
4. installation via R.A.M.S

ALL GATES & POSTS ARE TO BE FITTED WITH BLACK PLASTIC INSERTS



ALL GATES TO COME WITH UNISLIDE DOUBLE SLIDER KIT

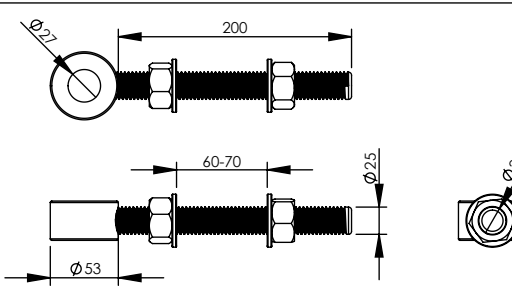


PART A
UNI-KIT-0500
Unislide Double Slider
Padlockable Gate Kit

PART B
APOL-ACC-0800
Apollo® Double Slider
Plate Kit

Other Lock Kits are available on request
(Click here for more information)

All gates come with 25mm Eye Bolts. Hinge posts are to be fitted with 3 x M25 eye bolts.



Thanks to the centrally welded mesh and the ability to mount the lock kit on either side, these kits provide maximum flexibility for various gate configurations.

4mm Thick Plate Slider Cover

The Apollo Lock Kits offer a universal solution for gate installations, allowing both right-hand and left-hand hanging.

Min OF 4 - 8 NO. M16x200mm ANCHOR BOLTS FITTED IN ACCORDANCE WITH MANUFACTURERS INSTRUCTIONS

4mm Thick Blanking Plate

8mm Thick Slider Bar

FirstFence®
HIRE & SALES

APOLLO®

TITLE: APOLLO® 0.9m x 1.5m High - 7.0m x 10.0m WIDE DOUBLE LEAF BOLT DOWN GATE KIT RANGE DRAWING

REV
A
A3

NAME	DATE
W.P.	26/06/2025
APV'D	
Tolerance	0 - 50mm ± 0.2mm > 50 - 500mm ± 1mm > 1000mm ± 3mm
Material	Steel
WEIGHT	N/A

SCALE: N/A SHEET 2 OF 2