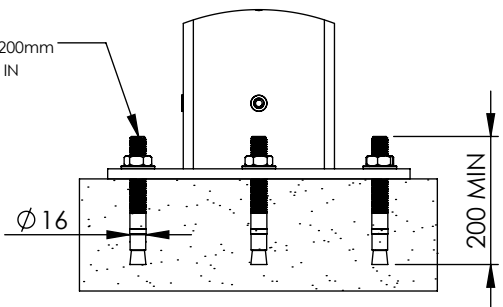


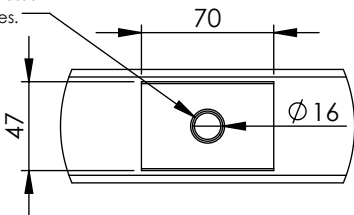
DO NOT SCALE DRAWING

Min OF 4 - 8 NO. M16x200mm
ANCHOR BOLTS FITTED IN
ACCORDANCE WITH
MANUFACTURERS
INSTRUCTIONS.

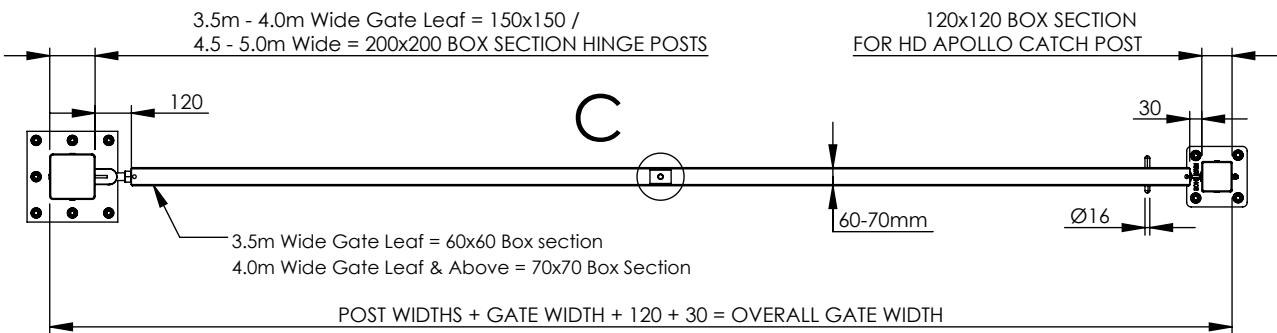


DETAIL B

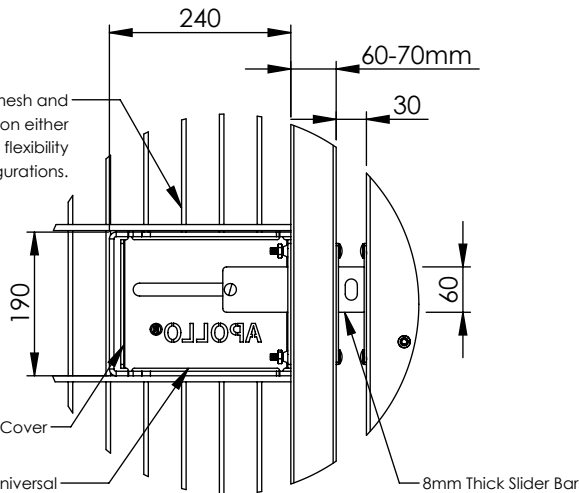
A16mm lifting eye in the M16
threaded hole to assist with
handling the gates.



DETAIL C

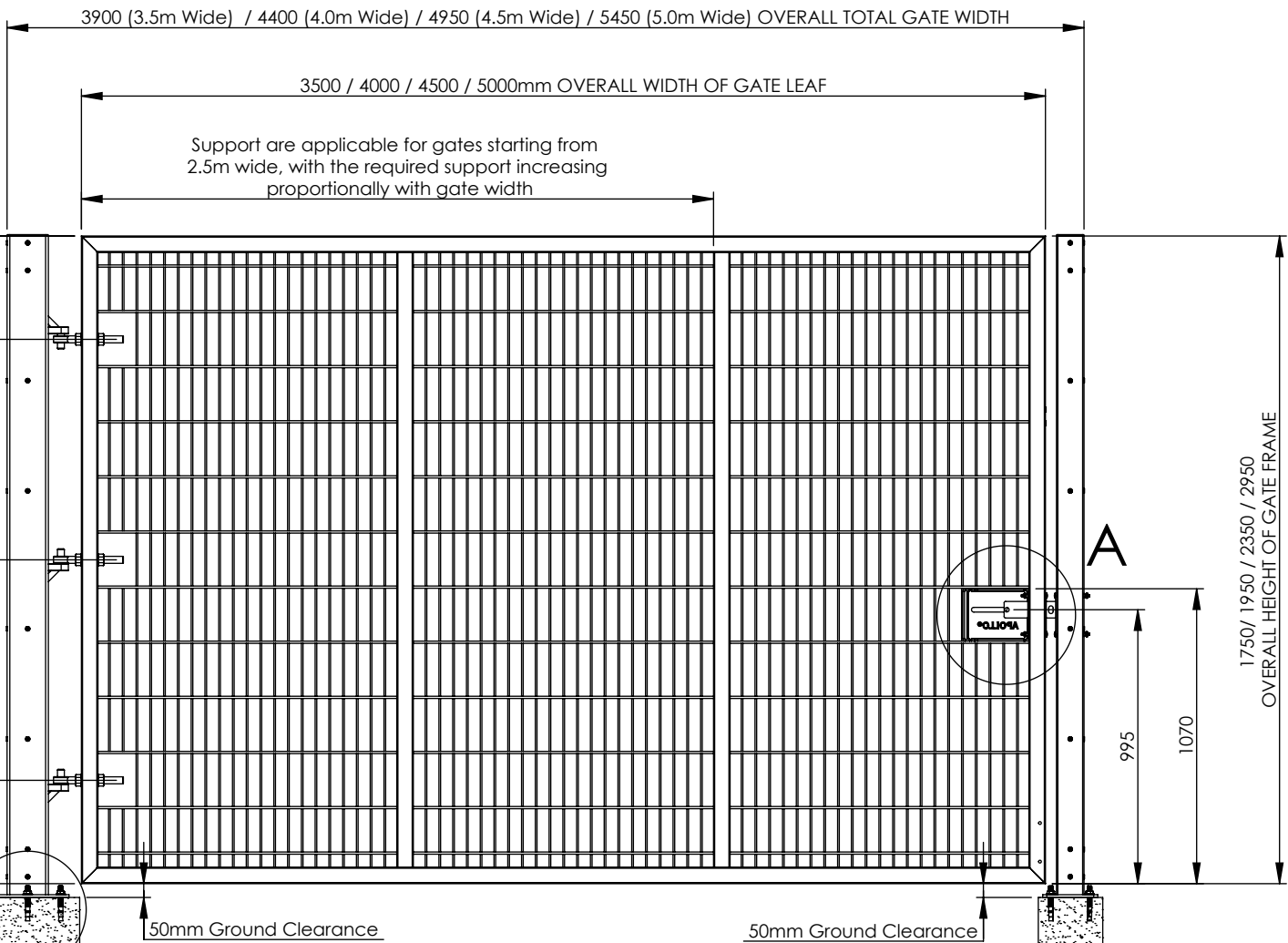


Thanks to the centrally welded mesh and
the ability to mount the lock kit on either
side, these kits provide maximum flexibility
for various gate configurations.



DETAIL A

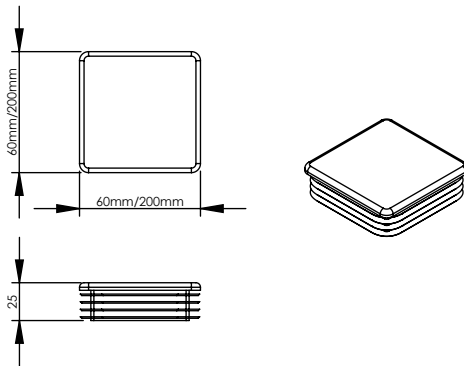
The Apollo HD Lock Kits offer a universal
solution for gate installations, allowing
both right-hand and left-hand hanging.



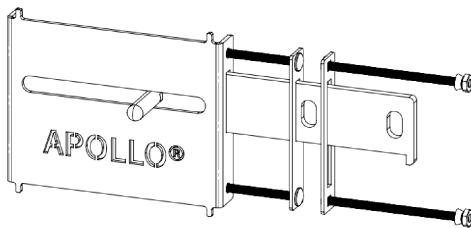
Notes:

1. All materials to be mild steel and conform to relevant British standards.
2. All items to be pre-galvanised to BS EN 10346 or hot dip galvanised to ISO 1461.
3. Items can be powder coated on request, powder coating to : BS EN 13438
4. installation via R.A.M.S

ALL GATES & POSTS ARE TO BE
FITTED WITH BLACK PLASTIC INSERTS



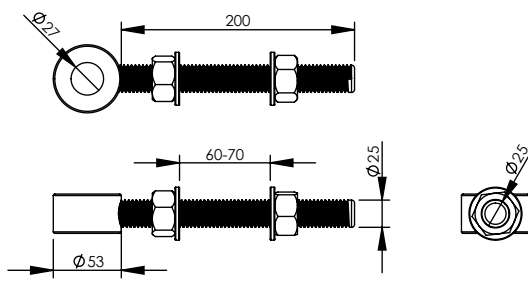
ALL HD GATES TO COME WITH SINGLE APOLLO HD SLIDE BOLT KIT


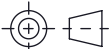


ACCS-GATE-2050 - FIRSTFENCE HD SLIDE
BOLT KIT FOR SINGLE LEAF GATES

Other Lock Kits are available on request
(Click here for more information)

All gates come with 25mm Eye Bolts. Hinge posts
are to be fitted with 3 x M25 eye bolts.



		NAME	DATE	<div>First Fence[®] — HIRE & SALES —</div>	
DRAWN		W.P	30/05/2025		
APV'D					
Tolerance	0 - 50mm	± 0.2mm	SKU:	APOLLO HD[®]	
	> 50 - 500mm	± 1mm			
	> 1000mm	± 3mm			
		Third Angle Projection	TITLE:		REV
Material: Steel			APOLLO HD [®] 1.8m x 3.0m High - 3.5m x 5.0m WIDE SINGLE LEAF BOLT DOWN GATE KIT RANGE DRAWING		A
WEIGHT: N/A			SCALE: N/A		A3
			SHEET 2 OF 2		