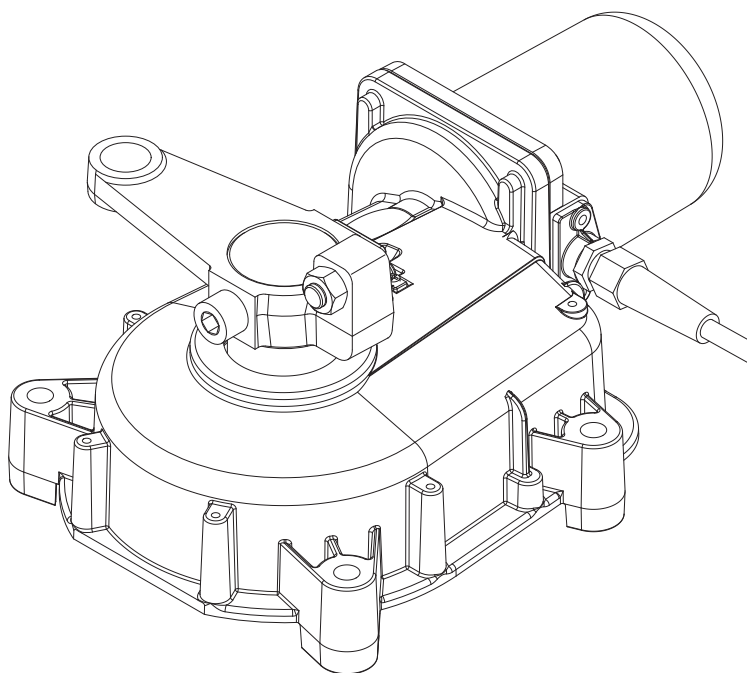


ELECTROMECHANICAL GATE OPENER

DU.IT14NE
DU.IT14NVE



Operating instructions and spare parts catalogue



Call our Expert Sales Team for more information.

TECHNICAL DATA		DU.IT14NE	DU.IT14NVE
Power supply		230 Vac	230 Vac
Absorbed current		1,6 A	1,6 A
Torque		370Nm	220 Nm
Max. wing weight		500 kg	200 kg
90° rotation time		≈ 22 s	≈ 11 s
Max. wing width		3 m	3 m
Operating temperature		-20°C/+50°C	-20°C/+50°C
N° contin. manoeuvres		16	32
Operating jogging		30%	40%
Protection degree		IP67	IP67
Noise level		<70dB (a)	<70dB (a)
Capacitor		12,5 µF	12,5 µF
Lubrication		Grasso	Grasso
Gearde motor weight		11,6 kg	11,6 kg
Casing weight		8,6 kg	8,6 kg

Overall dimensions

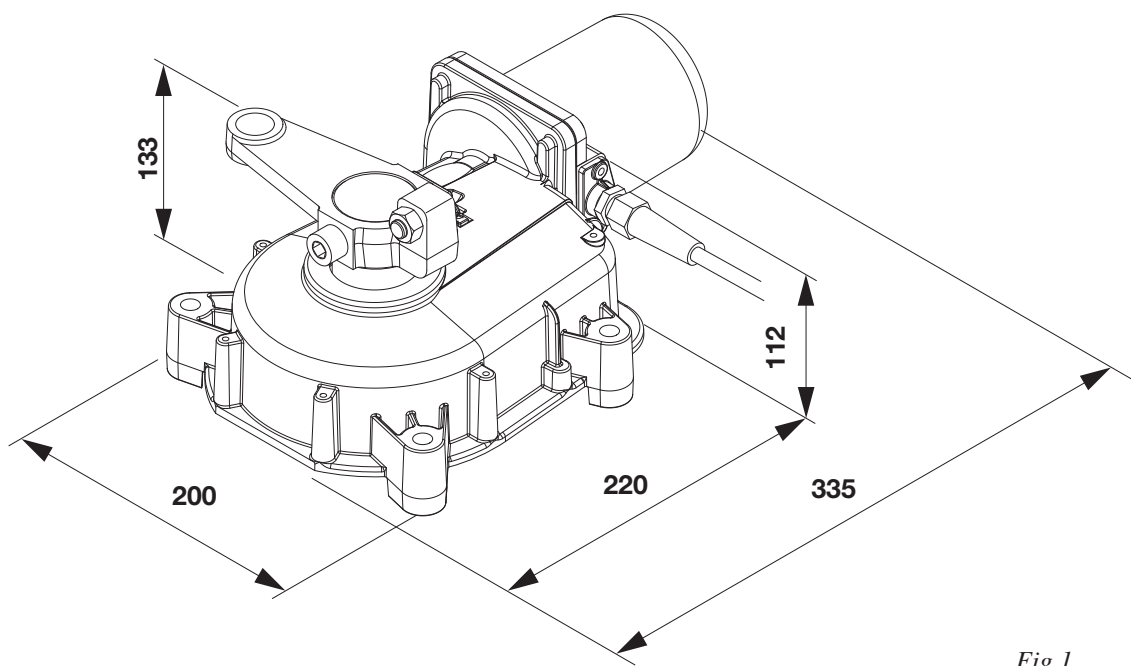


Fig.1

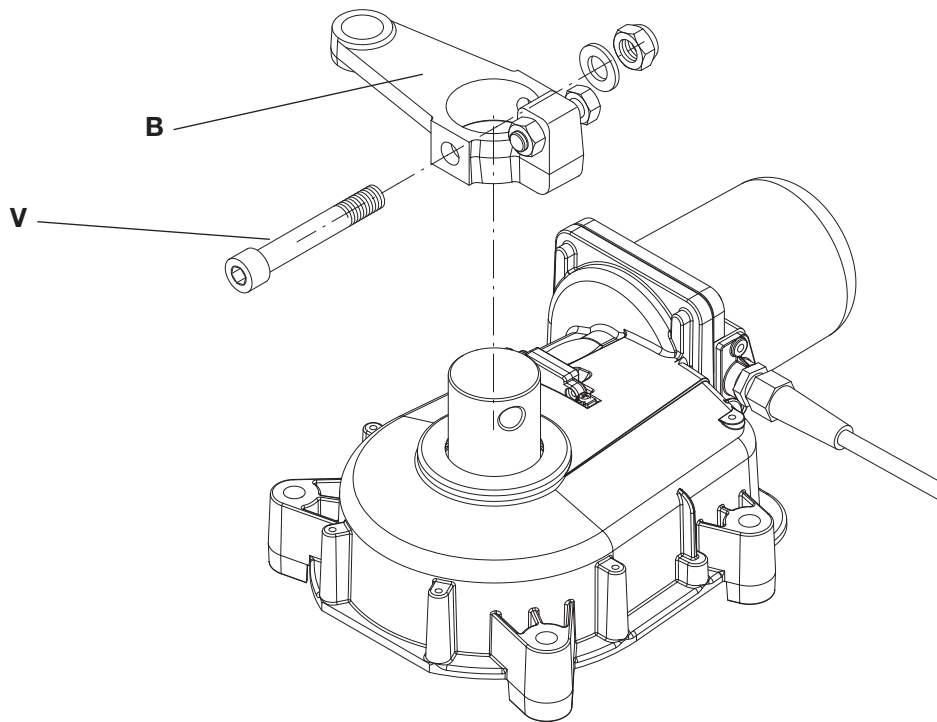


Fig.2

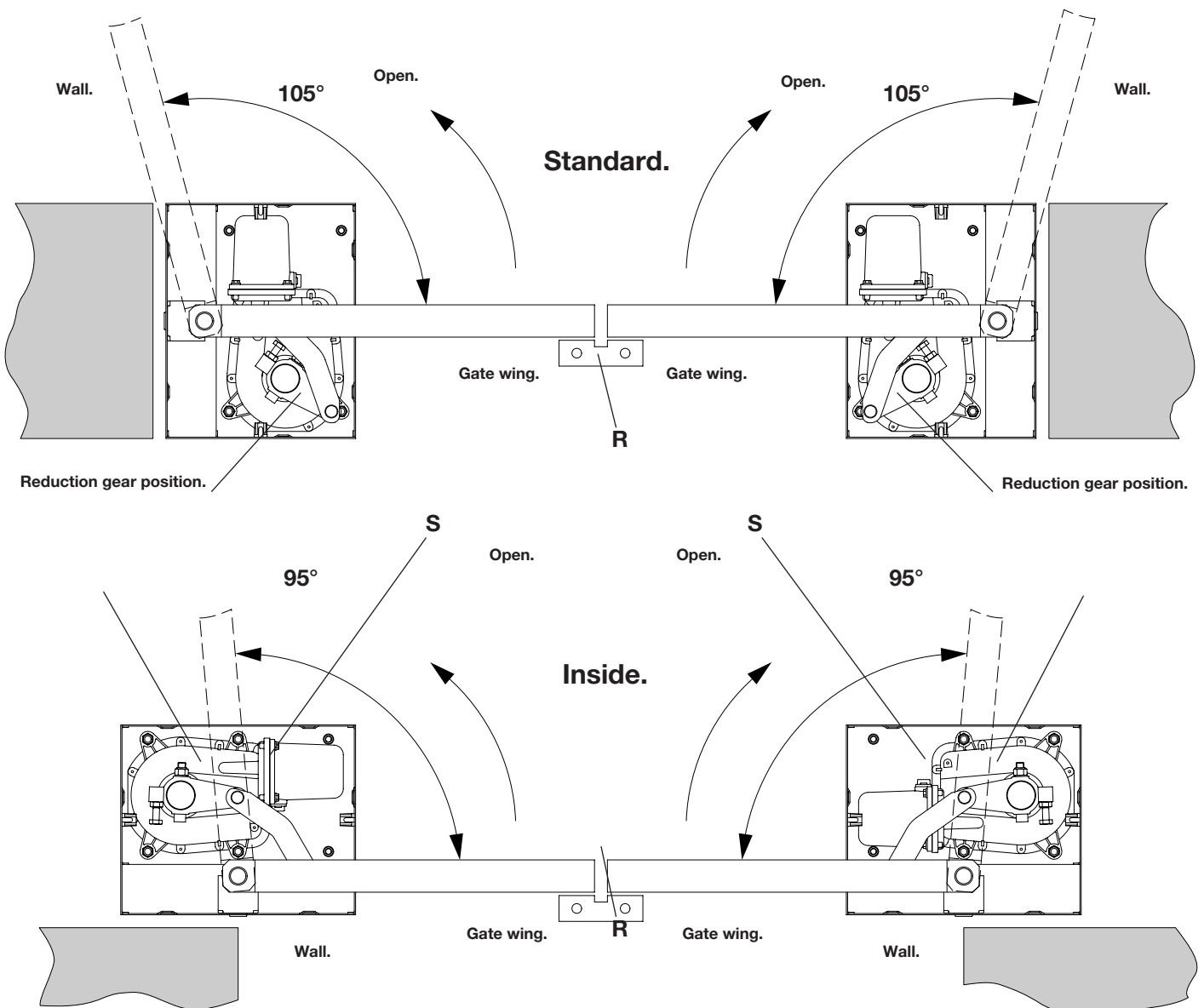


Fig.3

Fig.5

Align the top hinge with the pivot.

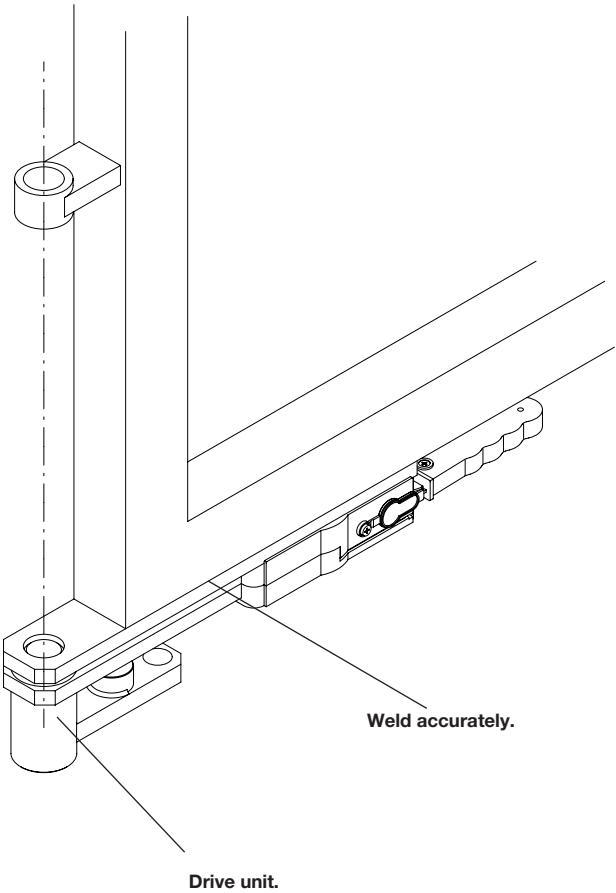
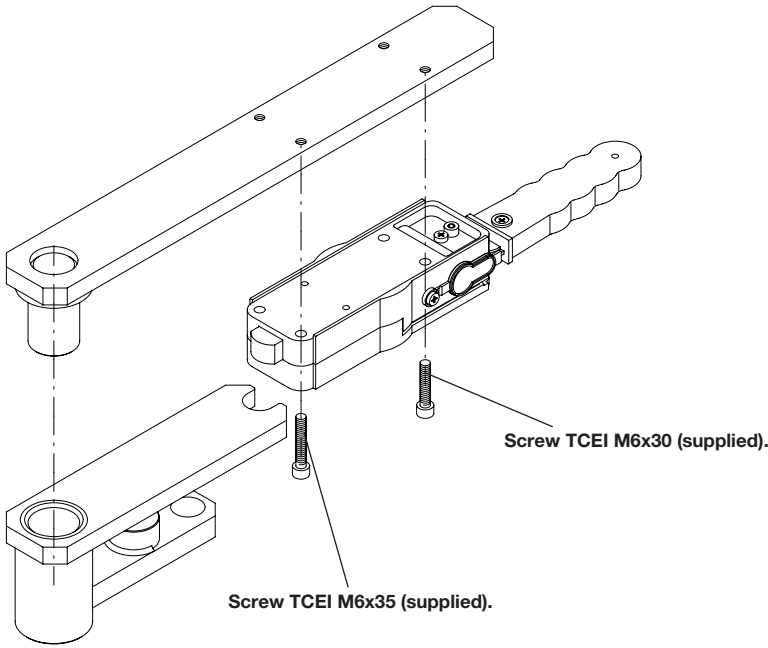


Fig.4

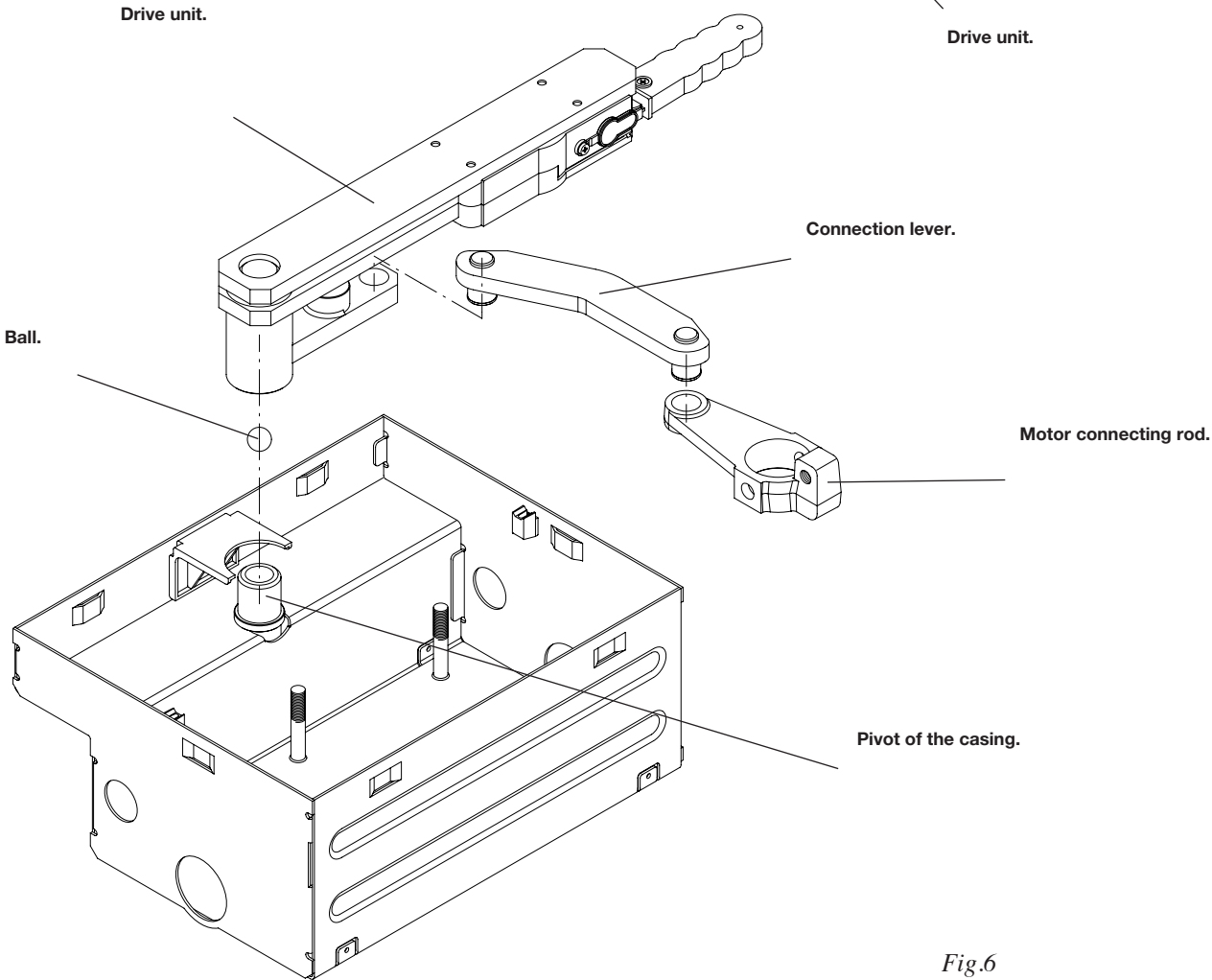


Fig.6

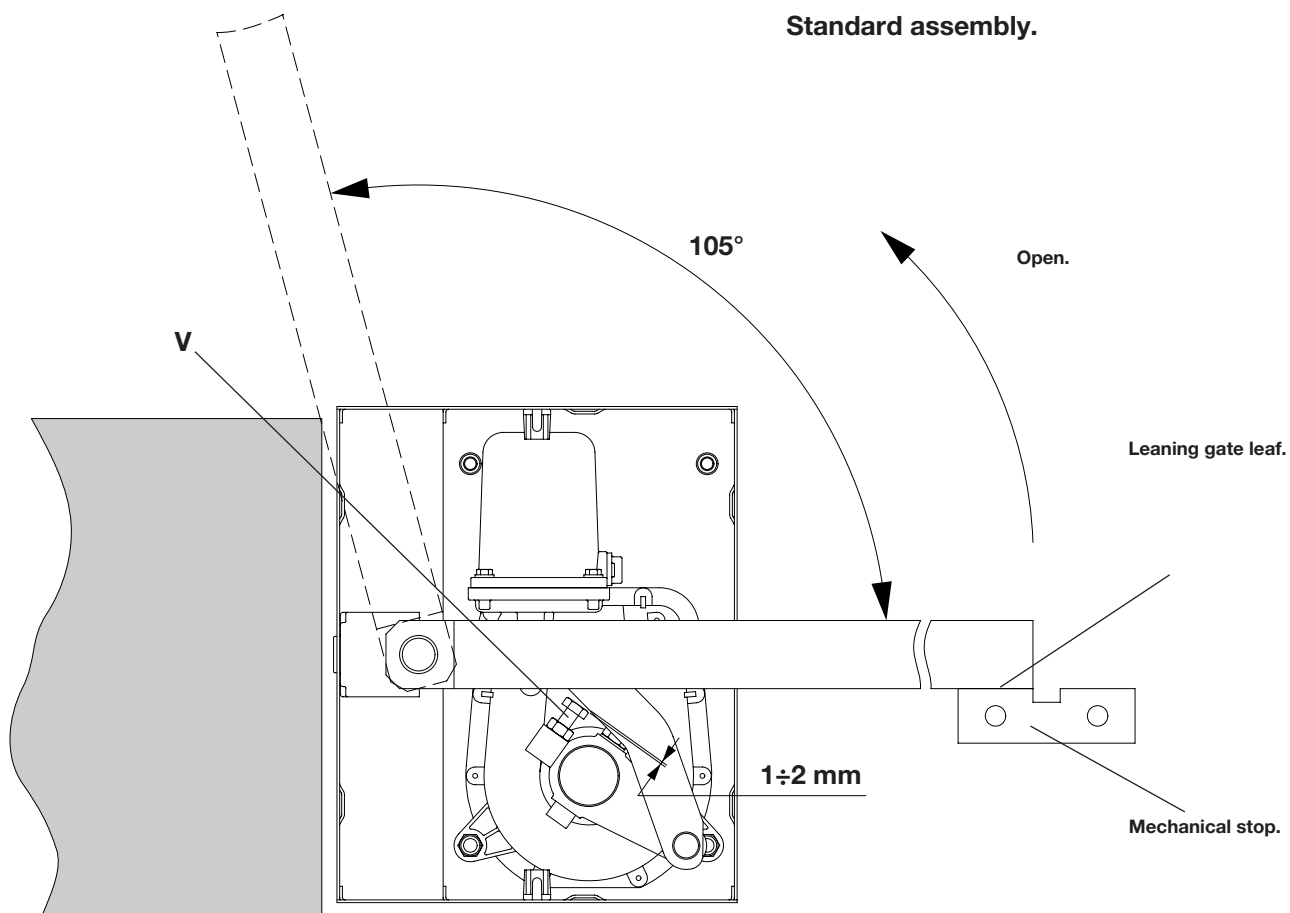


Fig.7

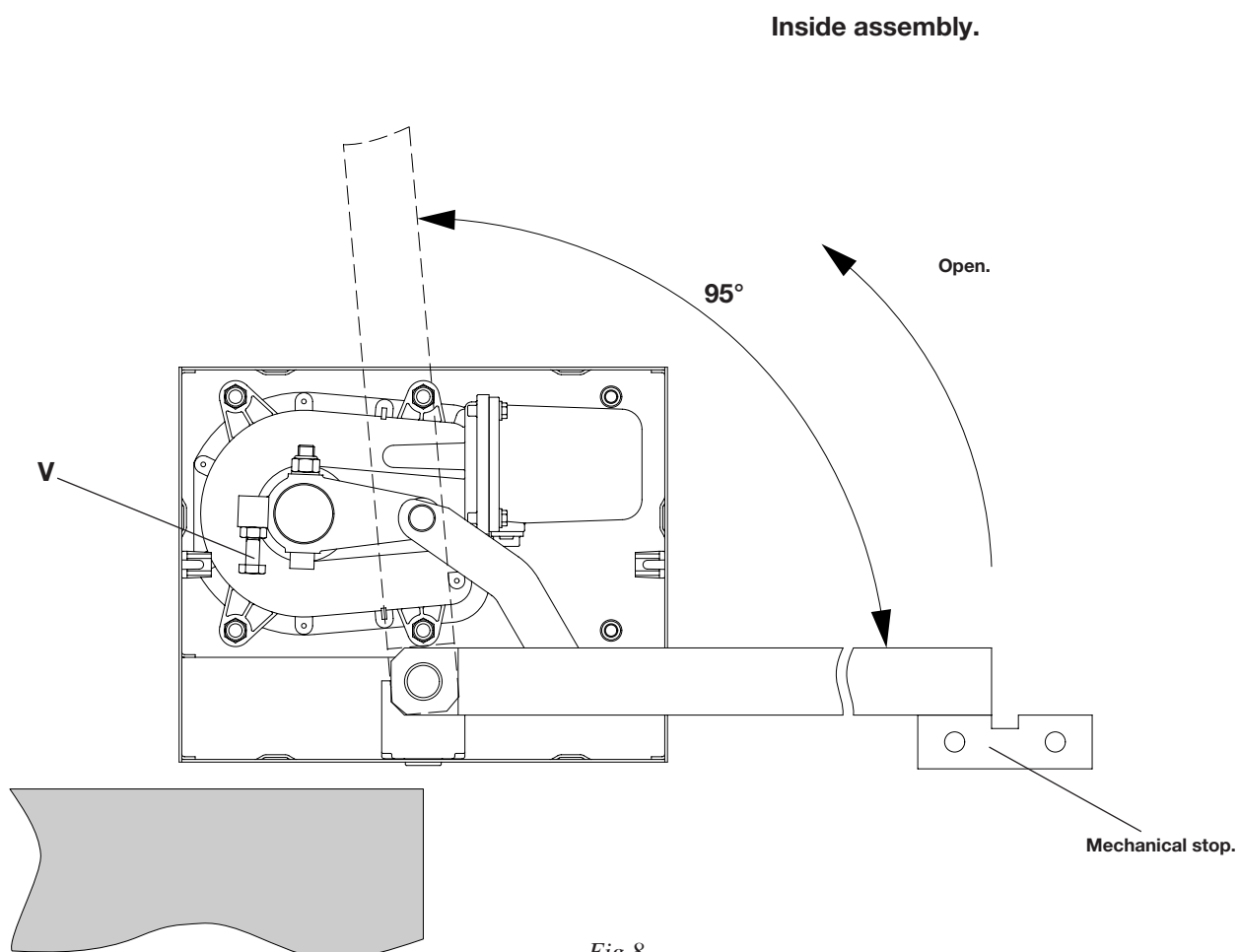
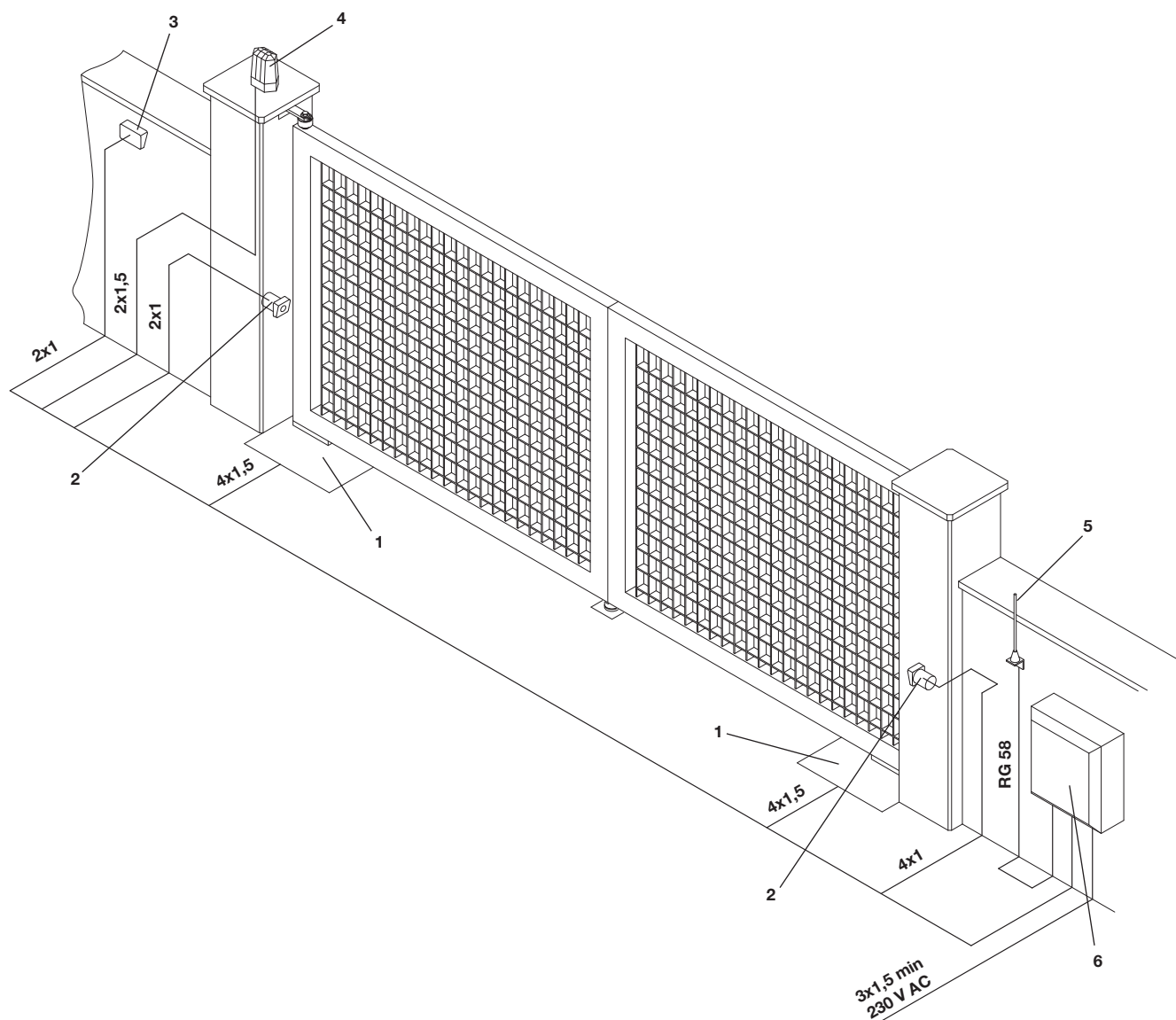


Fig.8



Legend:

- 1 Motoreducer DU.IT14NE/NVE, box DU.CNI
- 2 Photo-electric cells SC.P30QI (built in) SC.P30QE (external)
- 3 Key selector ID.SC or ID.SCE (external) or digital keyboard ID.PTD
- 4 Flash-light ID.LUX
- 5 Antenna LO.W1N or LO.W1LUX (quartz)
- 6 Electronic gearcase DA.93AM

N.B.: The power cables must be kept separated from the auxiliary cables.

Warning

- Before installing the automatic system read the instructions hereunder carefully.
- It is strictly forbidden to use the product DU.IT14NE/NVE for applications other than indicated in this instruction handbook.
- Show the user how to use the automation system.
- Give the user the part of the leaflet which contains the instructions for users.

General information

For an efficient operation of these automatisms, the gate must have the following features:

- good stoutness and stiffness
- every wing must have one only hinge (if necessary, eliminate the others).
- all hinges must have positive clearances and permit smooth and regular manual operations.
- when wings are closed their height have to fit together.

Installation of the geared motor group

- 1 Assemble the cam "B" as per Fig. 2 and firmly tighten the screw V (tightening torque 45 Nm max).
- 2 Fit the geared motor group to the casing with 4 of the 6 nuts supplied on the casing, according to the type of assembly (see Fig. 3) and with the self-tapping screws supplied.
N.B.: Before tightening the fixing screws of the geared motor check that there is no clearance between the 4 screws and the reduction gear surface. In the negative, provide shim as required.
- 3 Pre-assemble the manual release to the gate supporting iron bar, as shown in Fig. 4.
- 4 Weld the drive unit to the gate as shown in Fig. 5.
- 5 Position the gate wing in the special niche, making sure that the ball is positioned between the pivot of the foundation casing and the drive unit. Then link the drive unit to the motor connecting rod through the special link bar (Fig. 6).

Adjustment of the mechanical limit switches

Standard assembly (ref. fig. 3-7).

- Adjust screw V so that, when the gate leaf leans against the mechanical stop, about 1÷2 mm space is left.
- The opening limit switch is fixed and averts that the gates overcomes 105°. For smaller openings use a mechanical stop on the ground or the electromechanical group DU.FCN.

Inside assembly (ref. fig. 3-8).

- The closing limit switch is composed of either the mechanical stop on the ground or the electro-mechanical group DU.FCN.
- For the opening limit switch, regulate the screw V (95° max.). For greater openings use the group DU.IT180N.

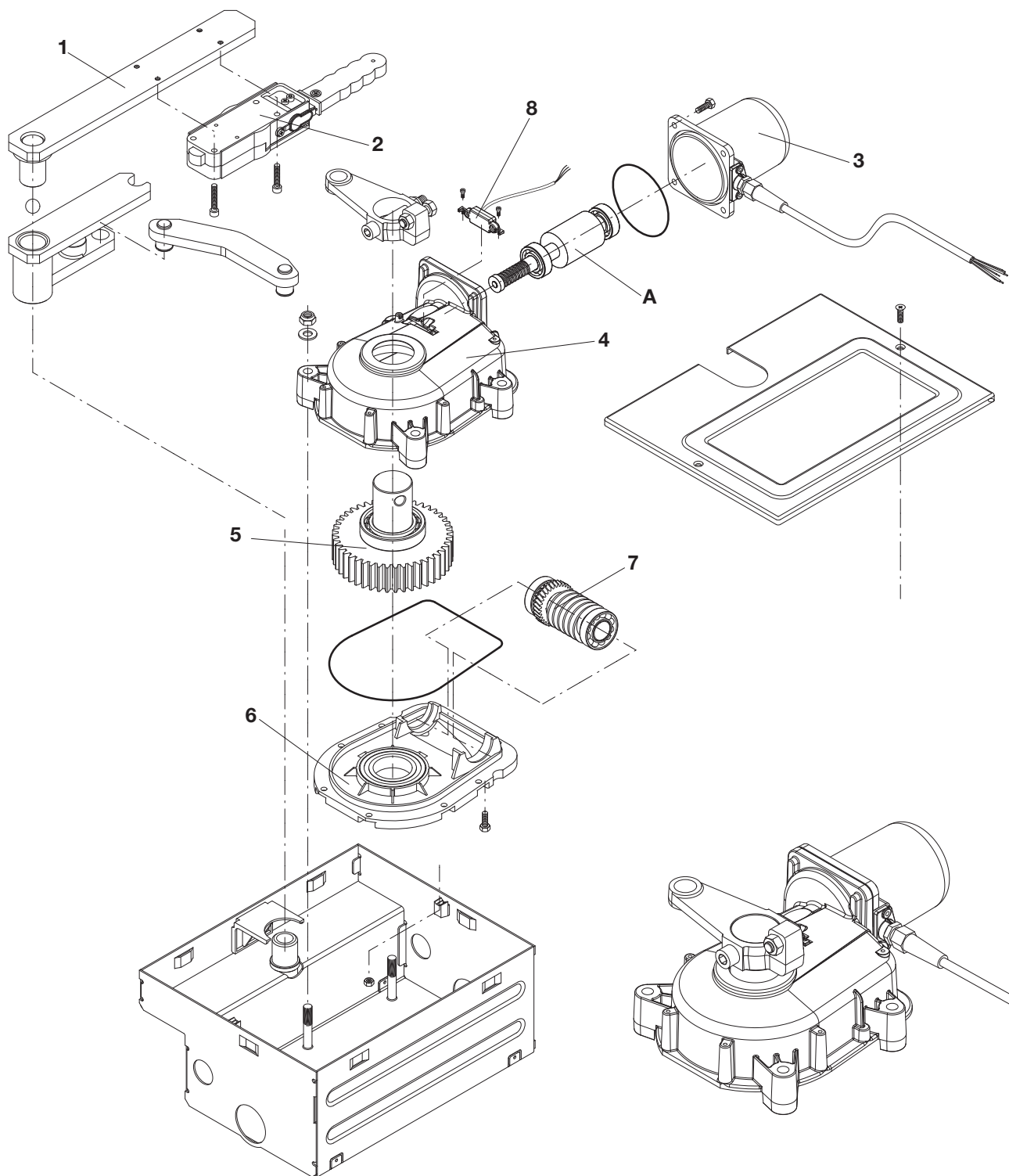
Connections

Brown	motor gear and capacitor.
Light blue	common.
Black	motor gear and capacitor.

ENCODER

Green	ENCODER signal
Brown	ENCODER positive
White	ENCODER negative

N.B.:For connections to the electronic gear case, please refer to instructions relative to the electronic gear case itself.



Ref.	DU.IT14NE Code	Note
A	9688234	
1	9686319	
2	9686282	
3	968602391	10m cable
4	9686284	
5	9686322	
6	9686286	
7	9686571	
8	9688236	Encoder

Ref.	DU.IT14NVE Code	Note
A	9688235	
1	9686319	
2	9686282	
3	968602391	10m cable
4	9686284	
5	9686322	
6	9686286	
7	9686571	
8	9688236	Encoder

EU Declaration of Conformity (DOC)

Manufacturer's name: Automatismi Benincà SpA
Postal Address: Via Capitello, 45
Post code and City: 36066 - Sandrigo (VI) - Italia
Telephone number: +39 0444 751030
E-mail address: sales@beninca.it

Declare that the DOC is issued under our sole responsibility and belongs to the following product:

Model/Product: DUJT14NE / DUJT14NVE

Type: Electromechanical actuator 230Vac for swing gates

The object of the declaration described above is in conformity with the relevant Union harmonization legislation:

Directive 2014/30/EU
Directive 2011/65/EU
Directive 2014/35/EU

The following harmonized standards and technical specifications have been applied:

EN 61000-6-2:2005, EN 61000-6-3:2007 + A1:2011
EN 60335-1:2012 + A11:2014; EN 60335-2-103:2015
50581:2012

Notified body (where applicable):

Additional information:

Signed for and on behalf of:
Sandrigo, 23/10/2018

Luigi Benincà, Responsabile legale



Call our Expert Sales Team for more information.

First Fence Ltd | Kiln Way, Woodville, South Derbyshire, DE11 8EA
01283 512 111 | www.firstfence.co.uk | sales@firstfence.co.uk