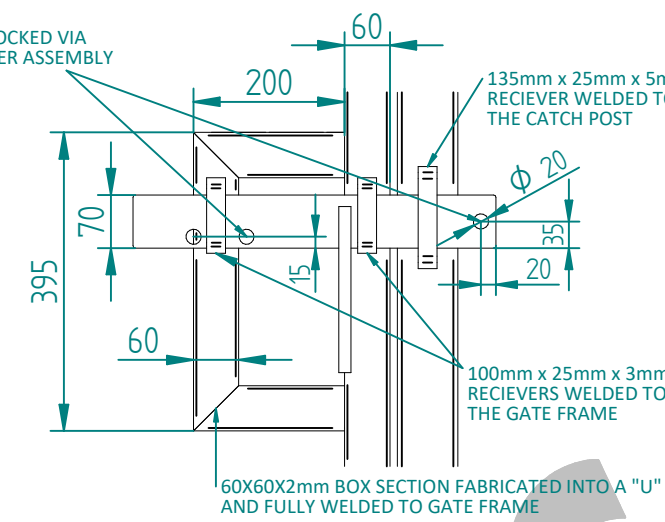


80x80x3 / 100x100x3 /
120x120x4 / 150x150x5 /
200x200x5 BOX SECTION HINGE POSTS

80x80x3 / 100x100x3
BOX SECTION CATCH POSTS

THREE GATE HOOKS FULLY
WELDED TO THE GATE POST

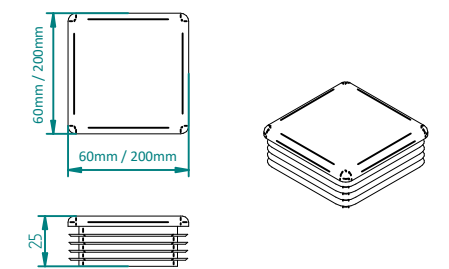
SECURITY PADLOCK CAN BE LOCKED VIA
TWO POSITIONS ON THE SLIDER ASSEMBLY



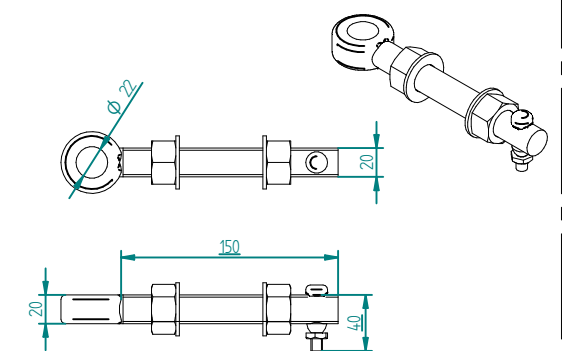
NOTES:

- ALL MATERIALS TO BE MILD STEEL AND CONFORM TO RELEVANT BRITISH STANDARDS.
- ALL ITEMS TO BE PRE-GALVANISED TO BS EN 10346 OR HOT DIP GALVANISED TO ISO 1461
- ITEMS CAN BE POWDER COATED ON REQUEST, POWDER COATING TO : BS EN 13438
- INSTALLATION VIA RAMS

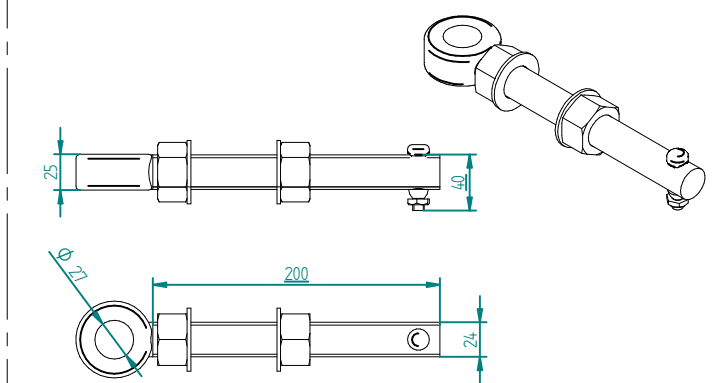
ALL GATES & POSTS ARE TO BE
FITTED WITH BLACK PLASTIC INSERTS



ALL GATES WITH 80x80/100x100/120x120
BOX SECTION HINGE POSTS ARE TO BE FITTED
WITH GALVANISED EYE BOLTS & M8x40mm
SADDLE BOLT / SHEAR NUT



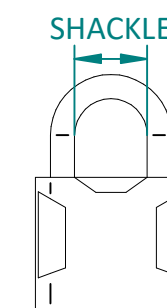
ALL GATES WITH 150x150 / 200x200 BOX SECTION
HINGE POSTS ARE TO BE FITTED WITH GALVANISED
EYE BOLTS & M8x40mm SADDLE BOLT / SHEAR NUT



FOR GATES TO BE COMPLIANT THEY MUST
BE FITTED WITH ONE OF THE PADLOCKS BELOW

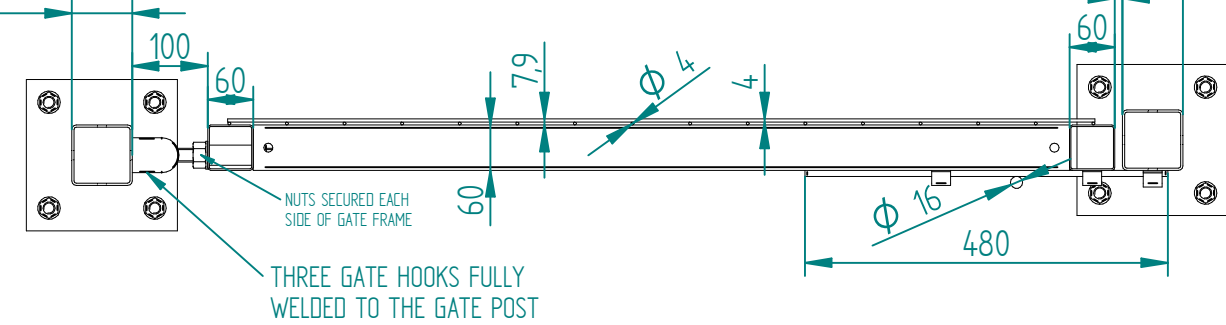
Henry Squire & Son PadLocks List

Product Name	Shackle (mm)	Security Rating
SS50S	26.0	2
SS50CS	16.0	2
SS65S	29.0	3
SS65CS	19.0	3
SS80S	34.5	3



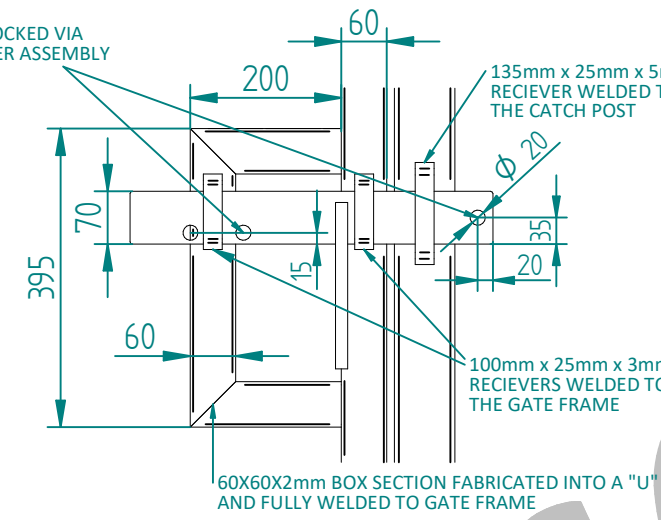
NAME	DATE	TITLE
DRAWN	LT	14/03/24
TOLERANCE	± 2mm Unless Stated Otherwise	
3RD ANGLE		
SIZE	A2	
WEIGHT:	N/A	
REV	B	
SHEET 1 OF 2		

80x80x3 / 100x100x3 /
120x120x4 / 150x150x5 /
200x200x5 BOX SECTION HINGE POSTS



80x80x3 / 100x100x3
BOX SECTION CATCH POSTS

SECURITY PADLOCK CAN BE LOCKED VIA
TWO POSITIONS ON THE SLIDER ASSEMBLY

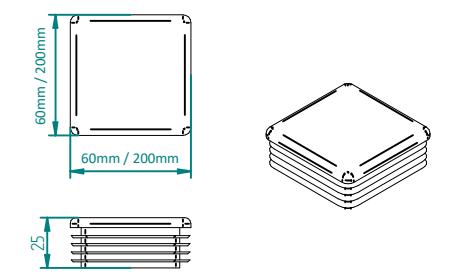


GENERIC SLIDER CONFIGURATION & LOCKING ARRANGEMENT

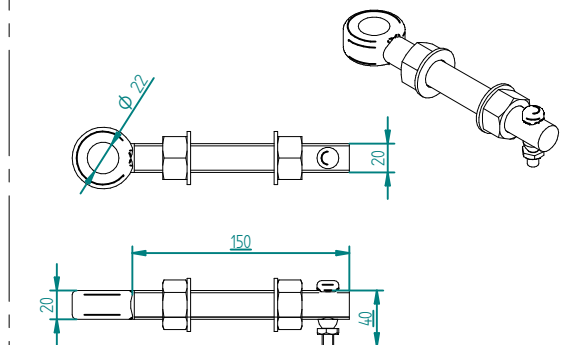
NOTES:

- ALL MATERIALS TO BE MILD STEEL AND CONFORM TO RELEVANT BRITISH STANDARDS.
- ALL ITEMS TO BE PRE-GALVANISED TO BS EN 10346 OR HOT DIP GALVANISED TO ISO 1461
- ITEMS CAN BE POWDER COATED ON REQUEST, POWDER COATING TO : BS EN 13438
- INSTALLATION VIA RAMS
- BOLT DOWN FIXING : REV THROUGH BOLTS ETA_AWA_RE02

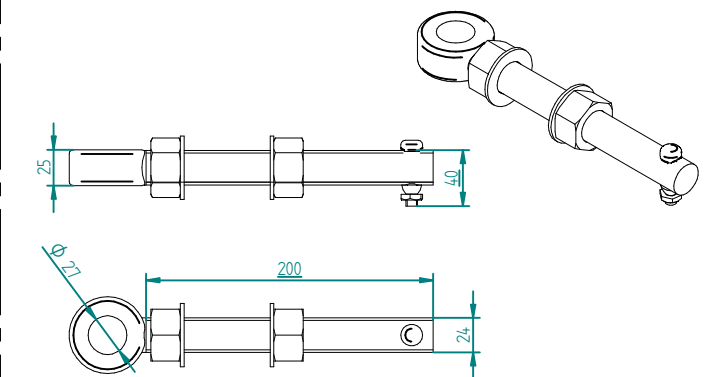
ALL GATES & POSTS ARE TO BE
FITTED WITH BLACK PLASTIC INSERTS



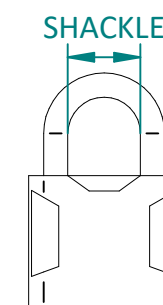
ALL GATES WITH 80x80/100x100/120x120
BOX SECTION HINGE POSTS ARE TO BE FITTED
WITH GALVANISED EYE BOLTS & M8x40mm
SADDLE BOLT / SHEAR NUT



ALL GATES WITH 150x150 / 200x200 BOX SECTION
HINGE POSTS ARE TO BE FITTED WITH GALVANISED
EYE BOLTS & M8x40mm SADDLE BOLT / SHEAR NUT

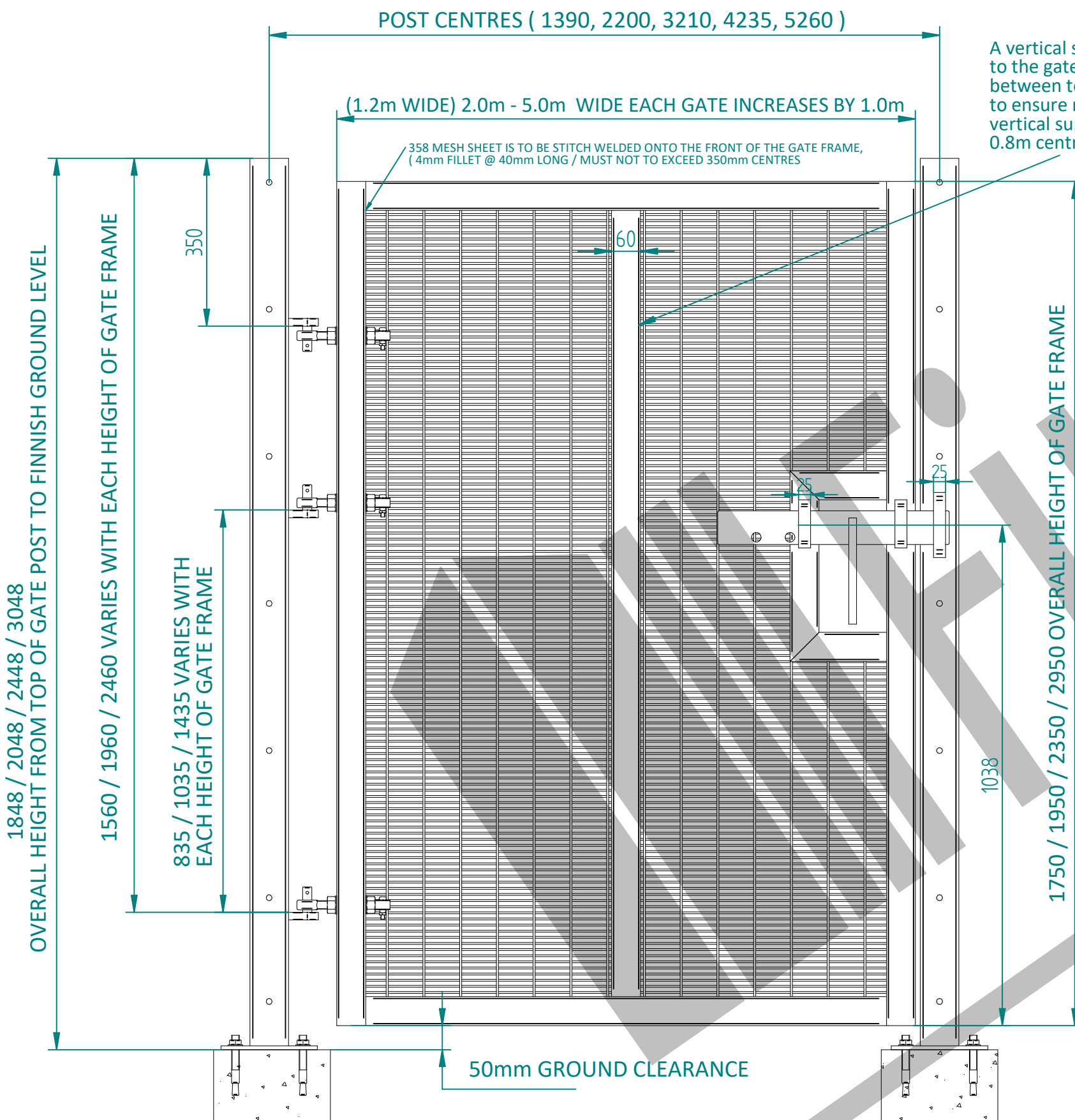


FOR GATES TO BE COMPLIANT THEY MUST
BE FITTED WITH ONE OF THE PADLOCKS BELOW



Henry Squire & Son PadLocks List

Product Name	Shackle (mm)	Security Rating
SS50S	26.0	2
SS50CS	16.0	2
SS65S	29.0	3
SS65CS	19.0	3
SS80S	34.5	3

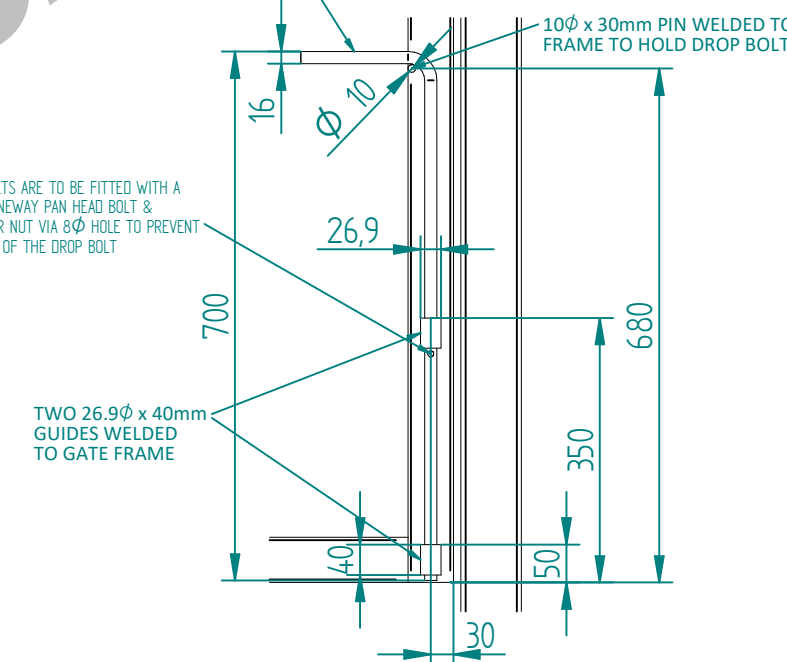


A vertical support of equal specification to the gate frame should be welded vertically between top and bottom cross member to ensure no mesh panel exceeds 2500mm wide, vertical supports can be added on all gates at min of 0.8m centres to create a more rigid frame.

All gate post are to have 12Φ thru holes to allow fixing of mesh fencing panel. All hole positions are to match the fencing system

DROB BOLTS ARE USED TO HOLD THE GATE IN THE OPEN POSITION

DROB BOLTS ARE TO BE FITTED WITH A M5x20 ONEWAY PAN HEAD BOLT & MS SHEAR NUT VIA 6Φ HOLE TO PREVENT REMOVAL OF THE DROP BOLT

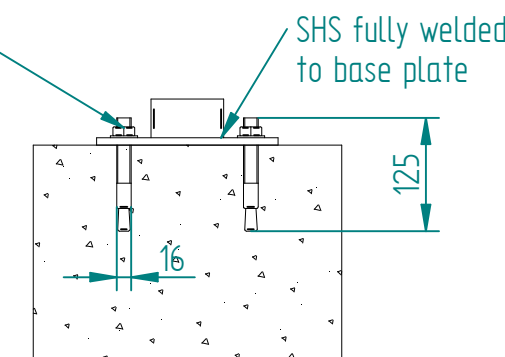


ALL GATES ABOVE 1200mm
WIDE REQUIRE DROP BOLTS

C20/25 MINIMUM CONCRETE
FOUNDATION GRADE

BOLT DOWN SINGLE LEAF GATE INTERNAL VIEW
OPENING 90° IN / OUT

Min OF 4 NO. M16x125mm
ANCHOR BOLTS FITTED IN
ACCORDANCE WITH
MANUFACTURERS
INSTRUCTIONS.



NAME	DATE	TITLE
DRAWN LT	14/03/24	ProFence® 1.8m - 3.0m High x 1.2m - 5.0m Wide Single Leaf 358 Mesh Gate Details
TOLERANCE ± 2mm Unless Stated Otherwise		
3RD ANGLE		
SIZE A2		REV B
WEIGHT: N/A		SHEET 2 OF 2