



*Security and Temporary Fencing*

**RB22 50MPH Crash Barrier System**

*Specification Sheet*

# RB22 50MPH Crash Barrier System

The complete barrier system is designed to withstand impacts from vehicles travelling up to 50mph (80kph). Weighing 600kg when filled with water (60kg when empty), they have the ability to bring errant vehicles to a controlled stop upon impact. This makes the barrier ideal for bordering off temporary road works and pedestrian walkways, especially on high speed roads.

Constructed from prime UV stabilised polyethylene, our RB22 Barriers interlock with reinforced steel pins, and for added strength two flat steel plates are easily screw fitted to each side making the RB22 strong and versatile.



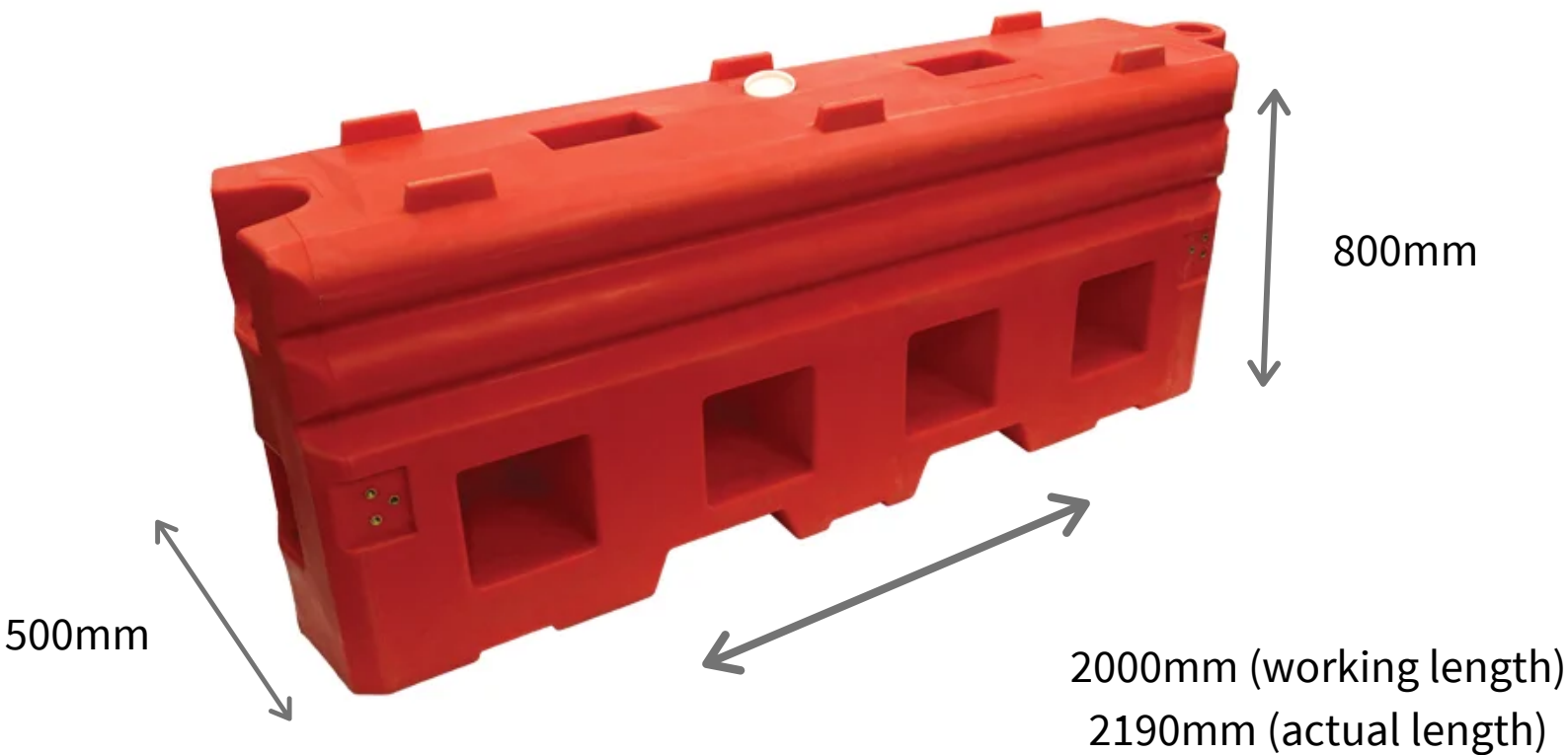
RB22 Barrier Specification

Height	Depth	Width
800mm	500mm	2000m

## Advantages and Features of The RB22 System

- Fully tested to **BS EN1317 - N1 50 Mph**
- On any impact if Barrier not punctured/damaged removal from site will not be required
- Easy and simple deployment - no need for lifting machinery or heavy tooling
- Quick secure pin hinge and support plates assemble for speed of set up
- Securely stackable through design for transport or storage
- Compatible with our mesh and hoarding panel systems
- Tested free standing – no permanent fixings
- One Piece Moulded- no added sections
- Up to 200 metres per load
- Wide fork lift slots at base

Weight Empty 60kg - Weight Full 600kg





# RB22 50MPH Crash Barrier System

**The RB22 Barrier is the “Highest Approved Plastic Barrier” system on the UK Highways approval list.**

Our RB22 Restraint / Crash Barrier System is tested and approved to VS EN1317-N1 50mph (80kmph) Crash Test.

The RB22 Restraint / Crash Barrier have been produced as a capable barrier system that on impact will bring an errant vehicle to a controlled stop yet they are easy to transport and are more eye catching than concrete barriers.

The RB22 Heavy Barrier can also be used in other environments such as rally, kart or course barriers, temporarily outlining loading bays or any situation where vehicular traffic may prove a hazard to others.

## Wind Speed Tested

1xRB22 Filled to Fill Line

Withstood Windspeeds of up to 78mph

**No Barrier Failed at this Speed**



**TESTED AND APPROVED TO BS EN1317-N1 50MPH (80KMPH)**



# Hoarding Panels

For added safety and security to the R22 Restraint / Crash Barrier System there are anti-climb mesh panels available.

Standing at an overall height of 2 metres, the hoarding panels are heavy duty fitted and are able to withstand high winds of up to 44mph.

### Key Features

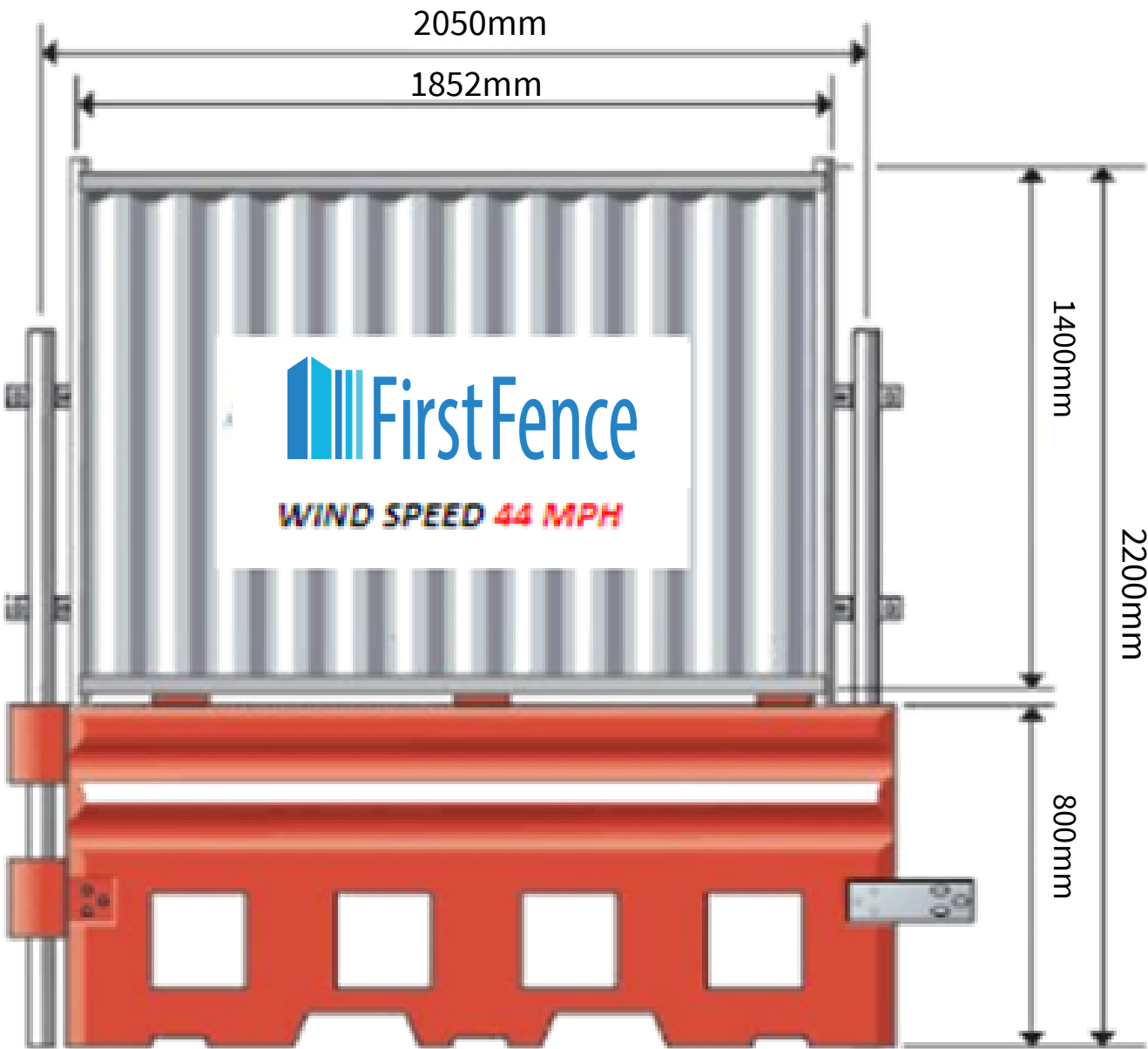
- Lightweight for easy transporting and handling
- Fencing poles weigh just 10.2 kg
- Wind resistant up to 44mph
- Highly visible white colour
- Units link via vertical pins
- Non-permanent fixing
- Steel powder coated
- Rapid Installation



### RB22 Barrier Specification

Hoarding Panels

Height	Depth	Length	Weight
1400mm	40mm	1852mm	25kg





# Mesh Panels

For added safety and security to the R22 Restraint / Crash Barrier System there are anti-climb mesh panels available.

For sites where visibility outside the construction area is needed, the mesh fence is a perfect solution, the panel can also withstand wind speeds of up to 77.8 mph.

### Key Features

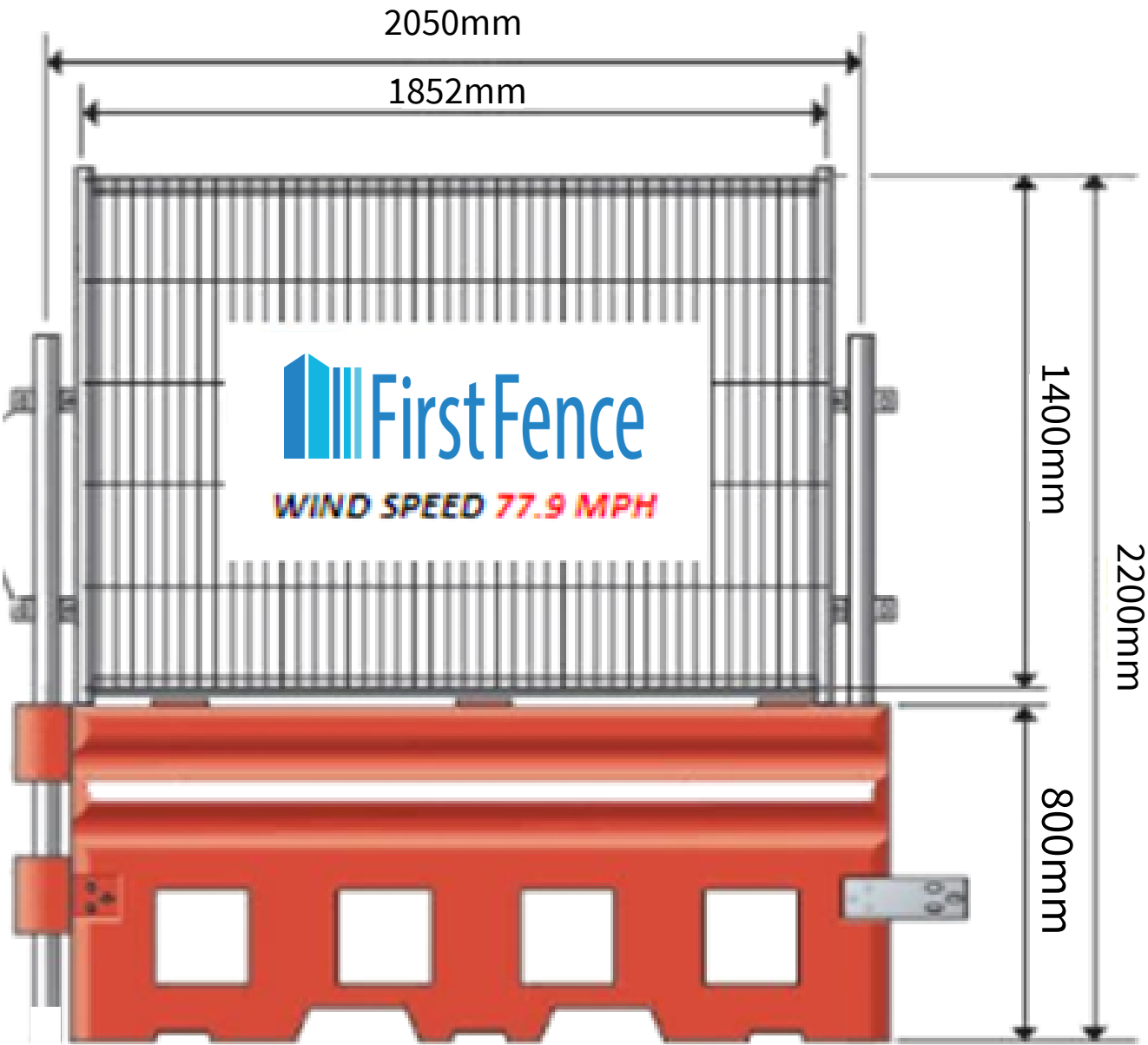
- Lightweight for easy transporting and handling
- Fencing poles weigh just 10.2 kg
- Wind resistant up to 77.8mph
- Highly visible white colour
- Units link via vertical pins
- Non-permanent fixing
- Steel powder coated
- Rapid Installation



### RB22 Barrier Specification

Mesh Panel

Height	Depth	Length	Weight
1400mm	40mm	1852mm	8.7kg



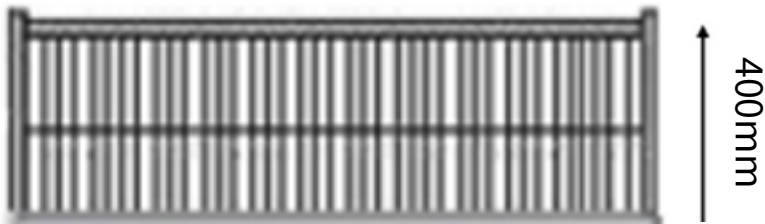
# Hoarding Mesh Extension Panel

These mesh extension panels are perfect for extending the height of your hoarding or mesh panel for when you need that little bit extra security.

Standing at an overall height of 0.5 metres, the extension panels s a perfect solution for sites to add an addition security as are easy to install.

### Key Features

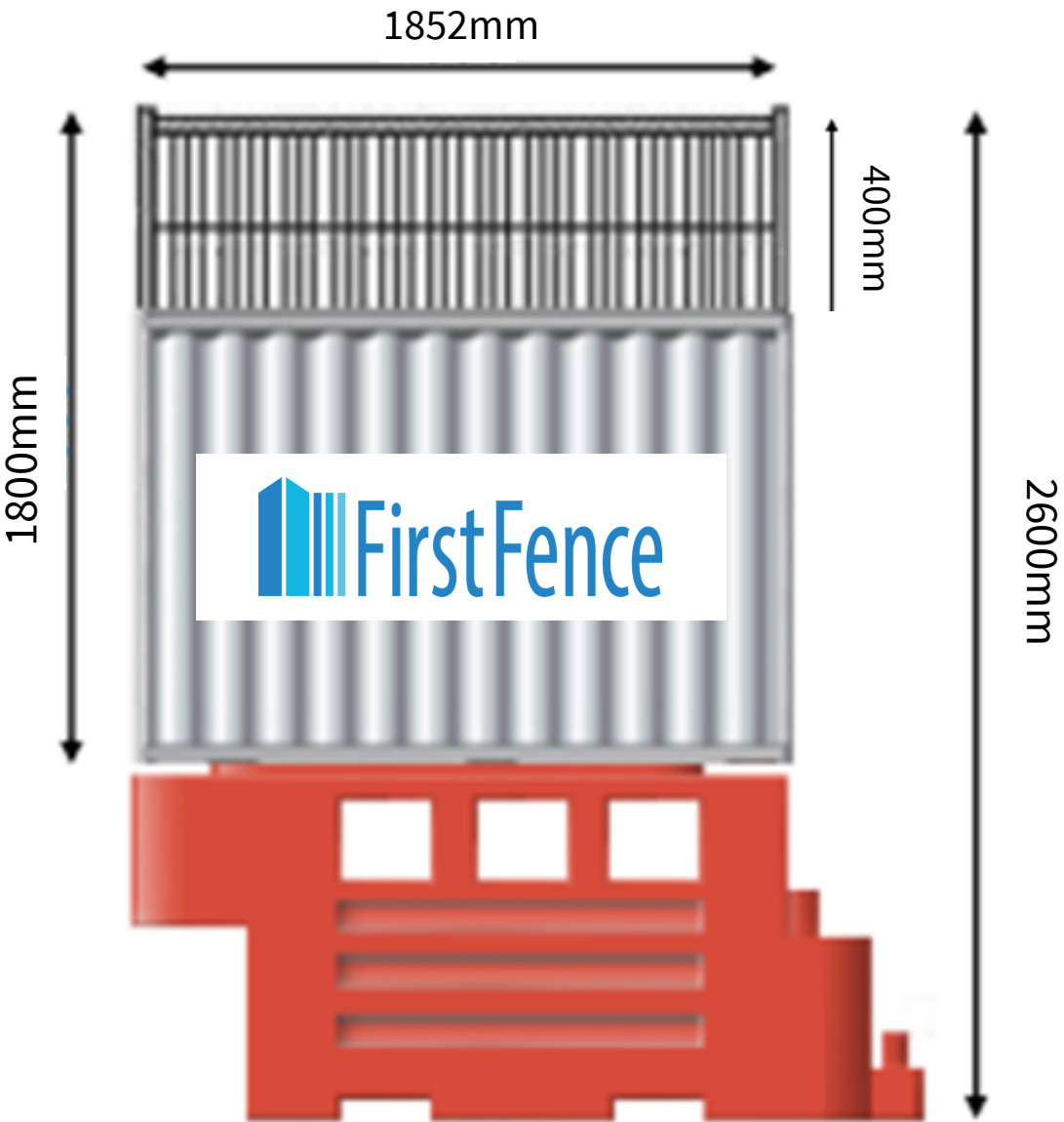
- Lightweight for easy transporting and handling
- Fencing poles weigh just 10.2 kg
- Highly visible white colour
- Units link via vertical pins
- Non-permanent fixing
- Steel powder coated
- Rapid Installation



## RB22 Barrier Specification

Mesh Panel

Height	Depth	Width	Weight
400mm	38mm	1852mm	8kg



# RB22 Barrier Vehicle Gate

By adding these gates to your system, it allows for a more secure and clear gateway into the restricted zone without compromising on safety.

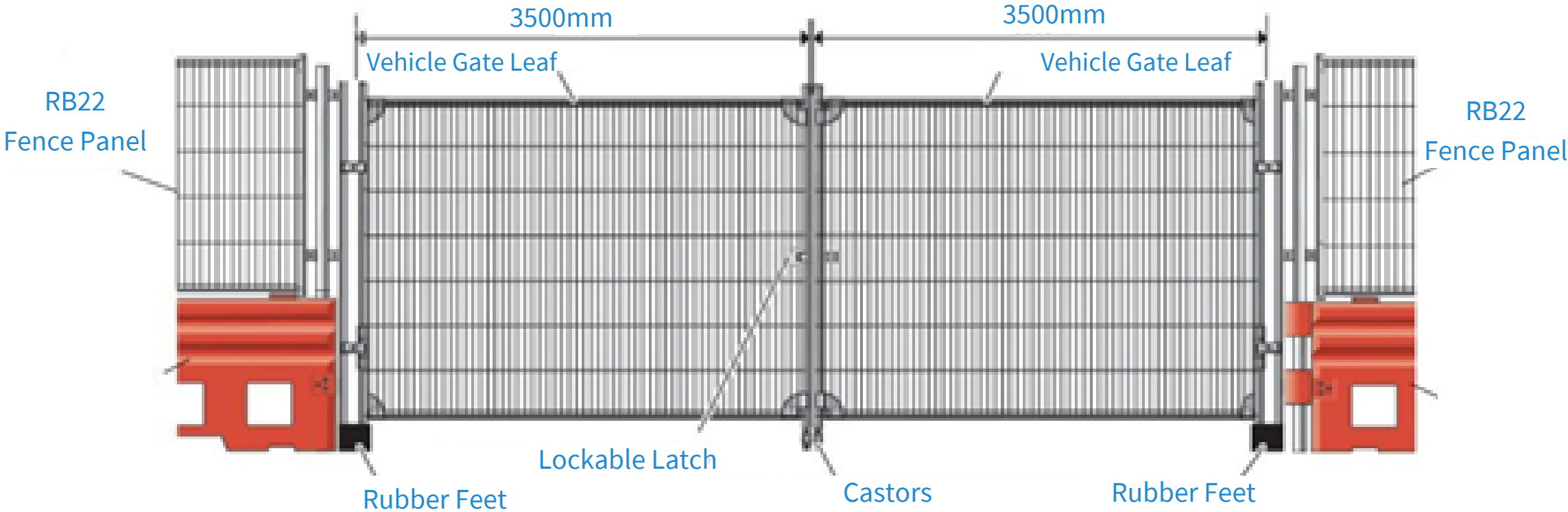
This vehicle gate is ideal for making your barrier more secure and for using within your traffic management system. The vehicle gate is fitted and secured to the barriers so that you can easily indicate restricted access zones while also allowing access for workers and work vehicles.

Made with Galvanised Steel to ensure the durability and strength of the gates, the leaf gates are expected to withstand a high amount of force as well as extreme weathers.

## RB22 Barrier Specification

Barrier Vehicle Gate

Height	Depth	Width	Infill Flag Panel	Material	Colour
2.07m	38mm	4m, 5m, 7m	250mm	Galvanised Steel	White



### Application

These gates are ideal for any medium to high-security levels, meaning that they can be used in a wide variety of different scenarios, some examples are:

- Building site security
- Road works on busy areas
- Airport traffic support
- Event access and perimeter security.





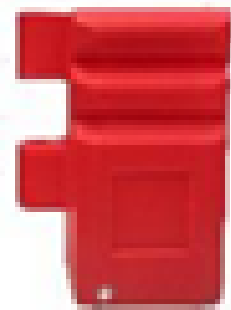
# Crash Barrier Bend Section

**The RB22 is a highly flexible barrier bend that gives the barrier systems greater flexibility in accommodating angles.**

The bend section barrier can easily be positioned and setup to navigate sweeping corners and 90° angles. It provides a substantial traffic safety solution.

As this item is assembled with limited parts there is no need for heavy tooling which makes it is easy to deploy. It is developed in order to protect pedestrians and other drivers.

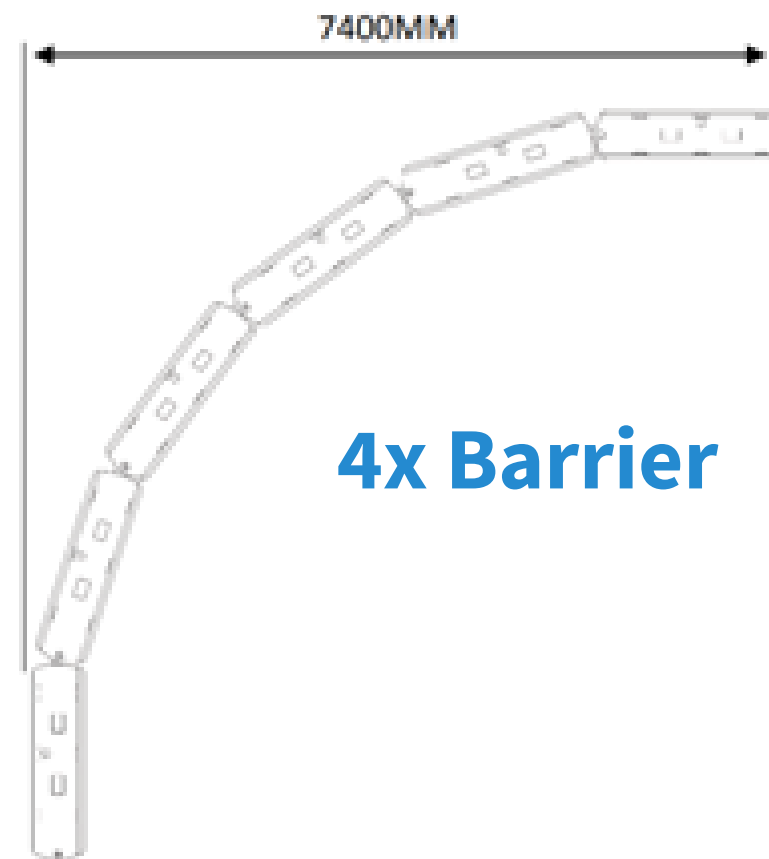
When filled this product should absorb speed when hit by wayward vehicles, deflecting them away. With the item being red and white it makes them a clear roadside item and visible to all road users which will allow them to be aware of potential roadworks or hazards.



**Angle Section Single Unit**

## Benefits

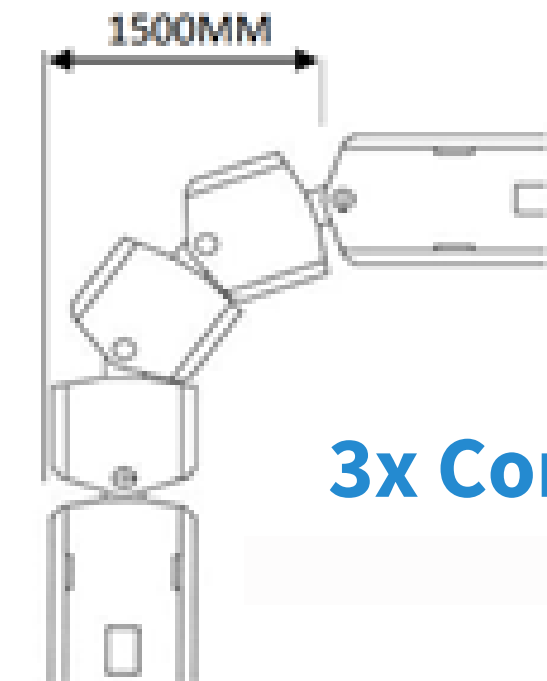
- Strong and durable
- Compatible with mesh or hoarding panels
- Can be will with water or ballast filled for extra stability
- One-piece moulding – no added sections.
- Wide forklift slots at base – for ease of deployment
- Creates a solid wall with no gaps
- Can be water filled during assembly
- Compatible with both sand and water



**4x Barrier**



**RB22's Forming Curve**

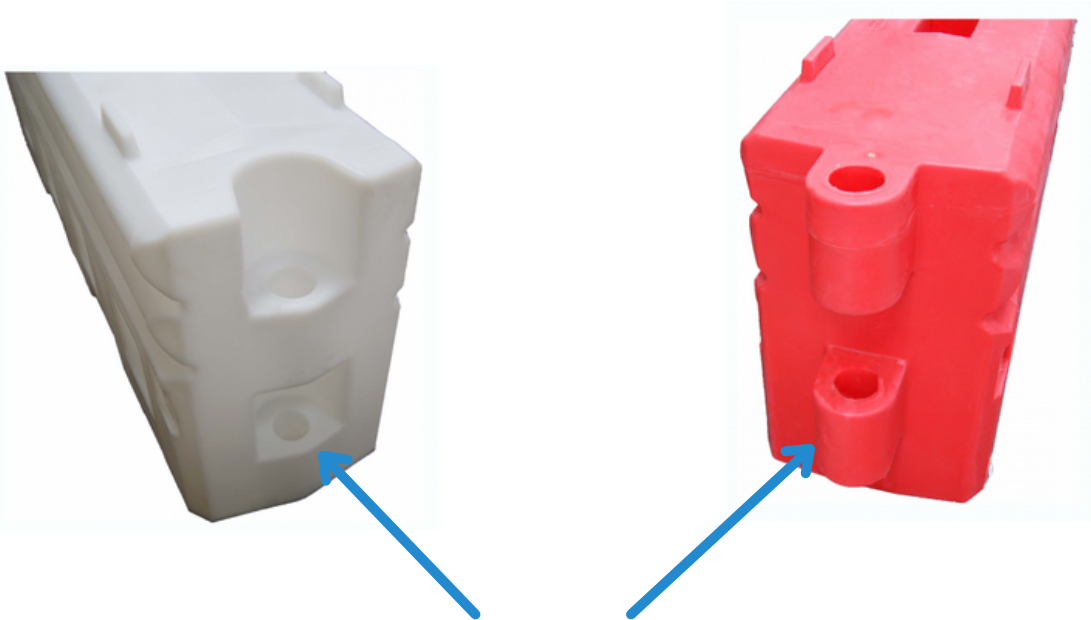


**3x Corner**

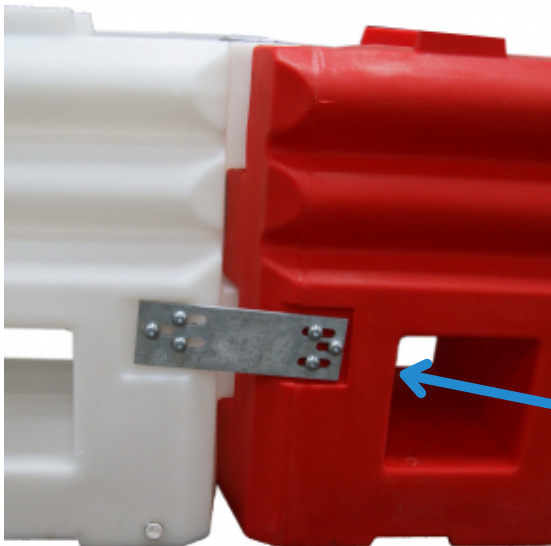
This item is the perfect roadside temporary barrier for low level containment use. These items are also compatible with mesh and hoarding panel systems which can offer extra protection particularly when assembled on a roadside.



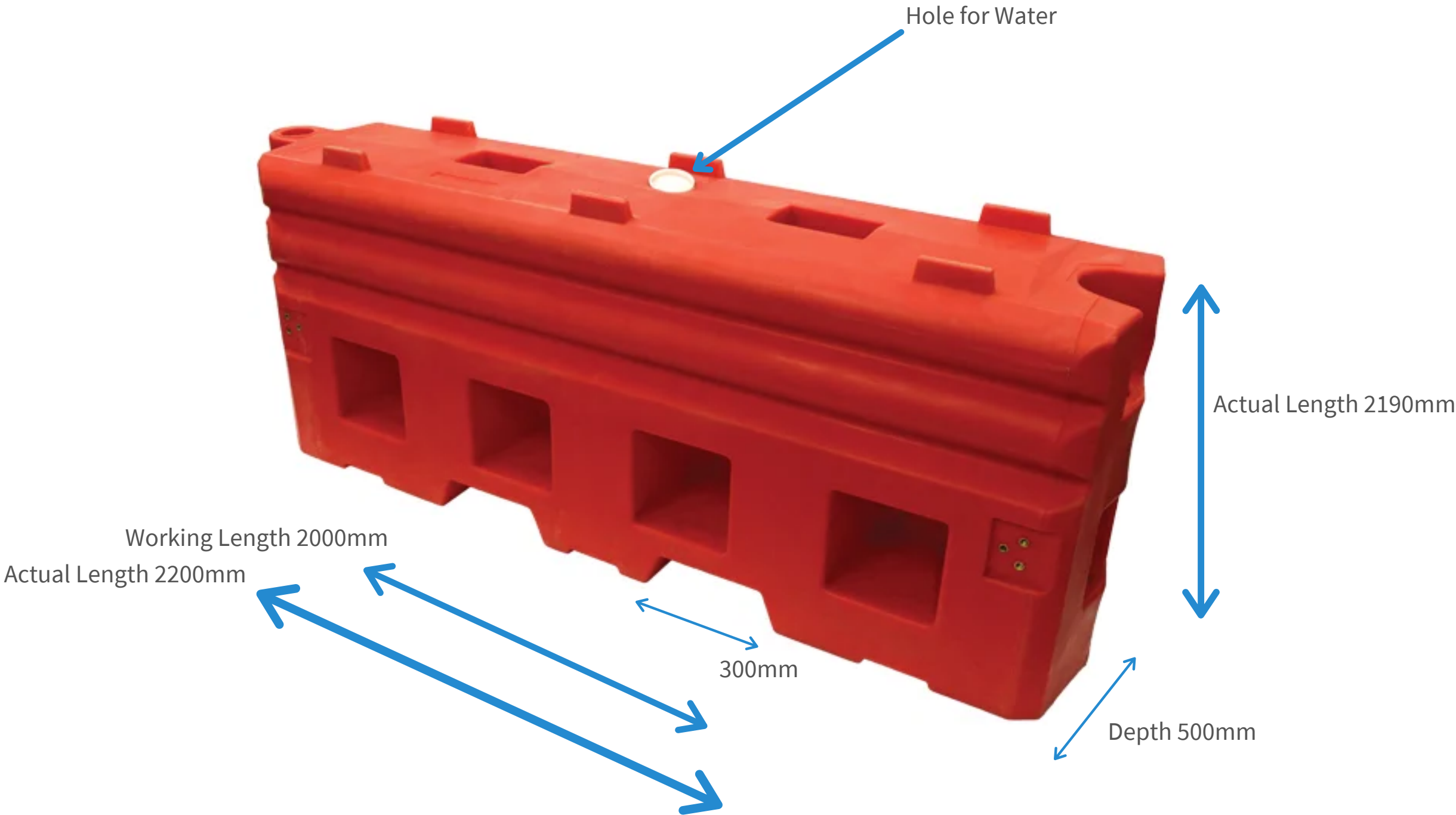
# Technical Details



Insertion points for connection pin or connecting post for mesh fence / hoarding panel poles

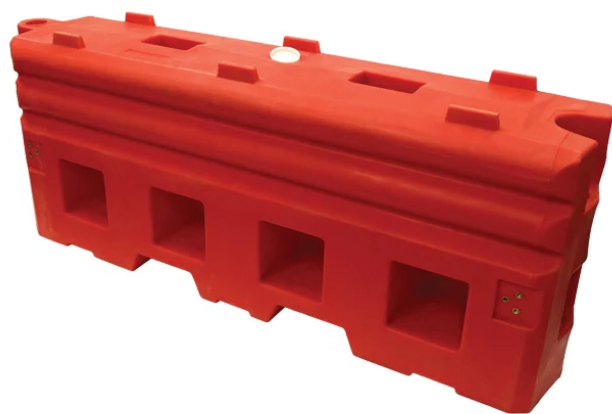


Face plate screw holes



# Standard Barrier Parts

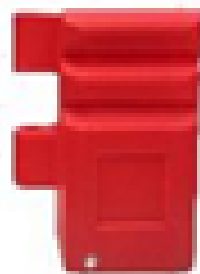
RB22 Barrier



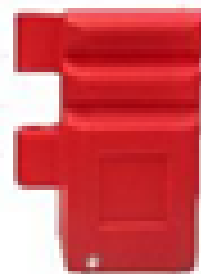
RB22 Pin



RB22 Angle



RB22 Stop



RB22 Plate



PRODUCT CODE

R822SB

-

RB22ANG

RB22EN

RB22P

DIMENSIONS (mm)

L2000 x H800 x D500

L800 x D76

L680 x H800 x D500

L680 x H800 x D500

L315 x H100 x D9

MATERIALS

UV MDPE

GALV STEEL

UV MDPE

UV MDPE

GALV STEEL

FILL CAPACITY (L)

540L

-

155L

155L

-

WEIGHT (E/F/KG)

60 / 600 KG

4

12 / 167

12 / 167

1.7

COLOUR

RED/ WHITE/ CUSTOM

-

RED/ WHITE/ CUSTOM

RED/ WHITE/ CUSTOM

-

NO PER PALLET

4 (OS)

-

12

12

-

CERTIFICATION

BS EN 1317 – N1 W7

50MPH CRASH TEST

-

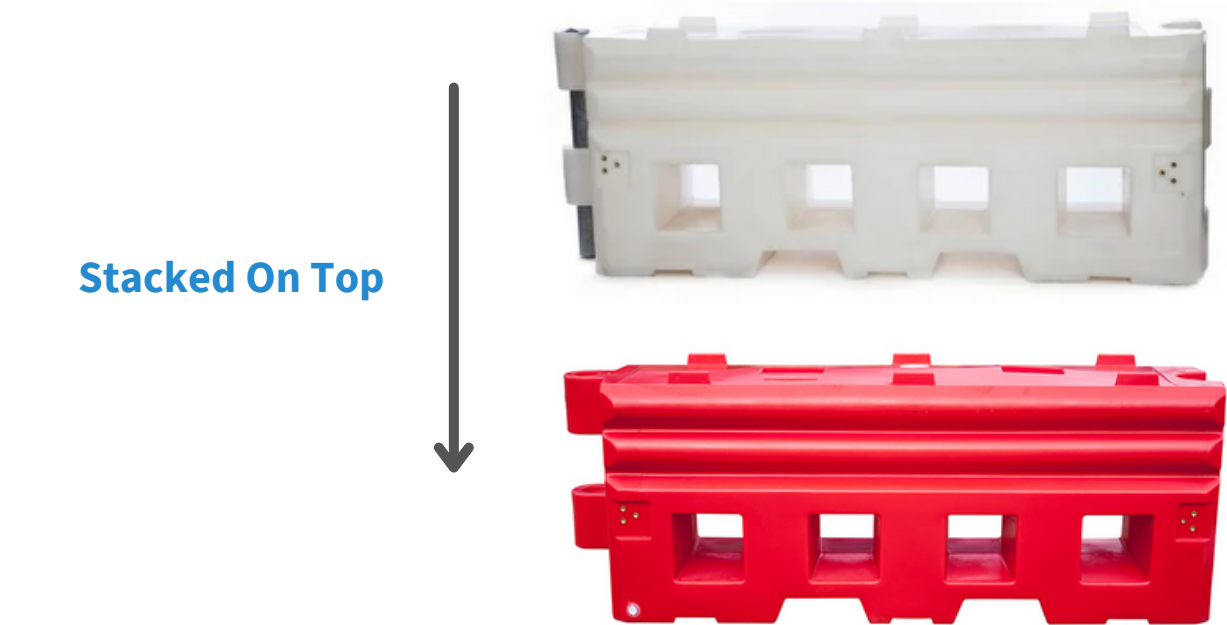
-

-

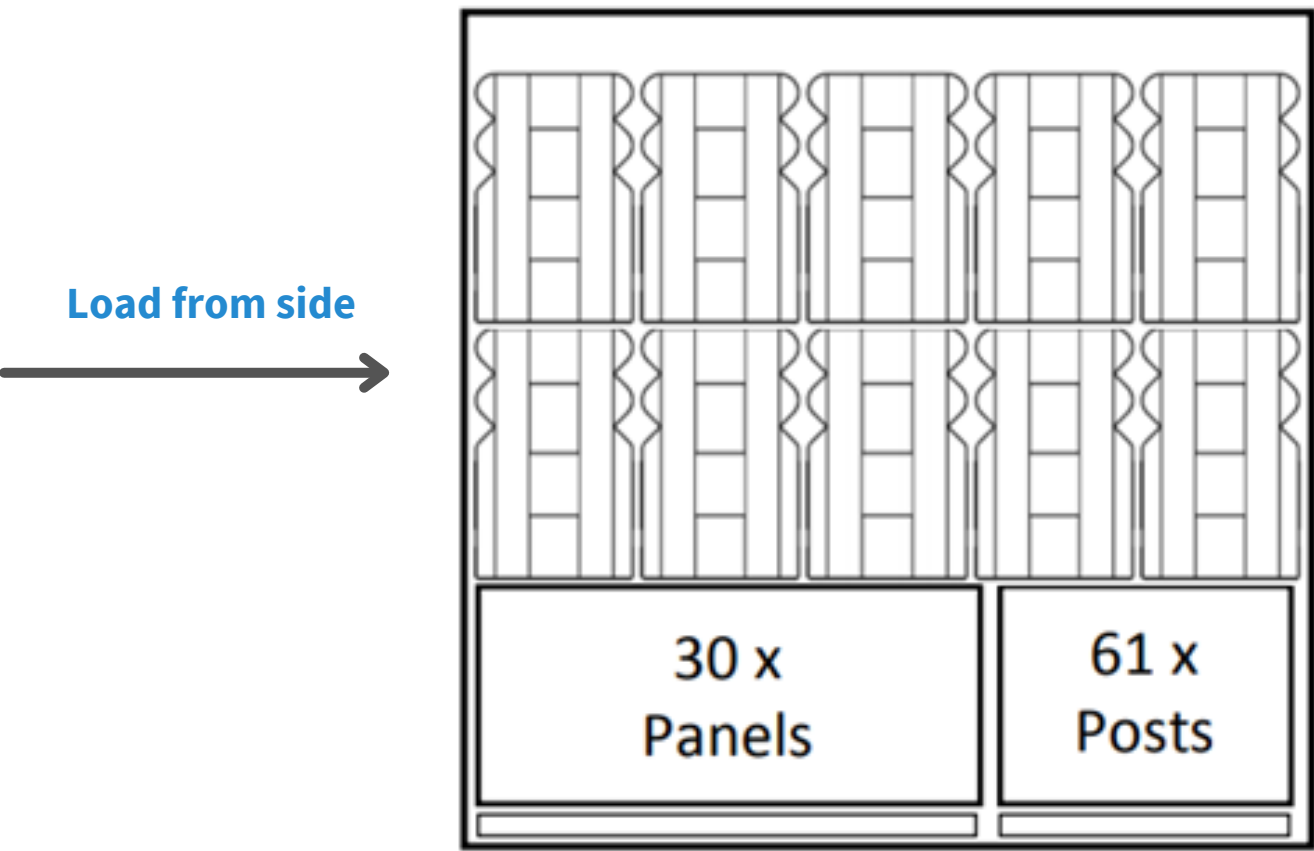
# 60 x RB22 Barriers & Panel Stacking

While the RB22 barrier weighs a hefty 600kg when fully loaded, it is relatively light when empty, weighing just 60kg. This, coupled with the fact it is securely stackable through design for transport or storage, means that 60 RB22s and panels can be stacked in a single artic load.

Binding is made simple by the dimensions of the barriers, which often benefit from stacking ridges on top and slots underneath. Lifting and loading onto a lorry trailer is simple and easy thanks to pre-moulded forklift grooves at the unit's foundation.



AS VIEWED FROM TRAILER SIDE



AS VIEWED FROM TRAILER SIDE

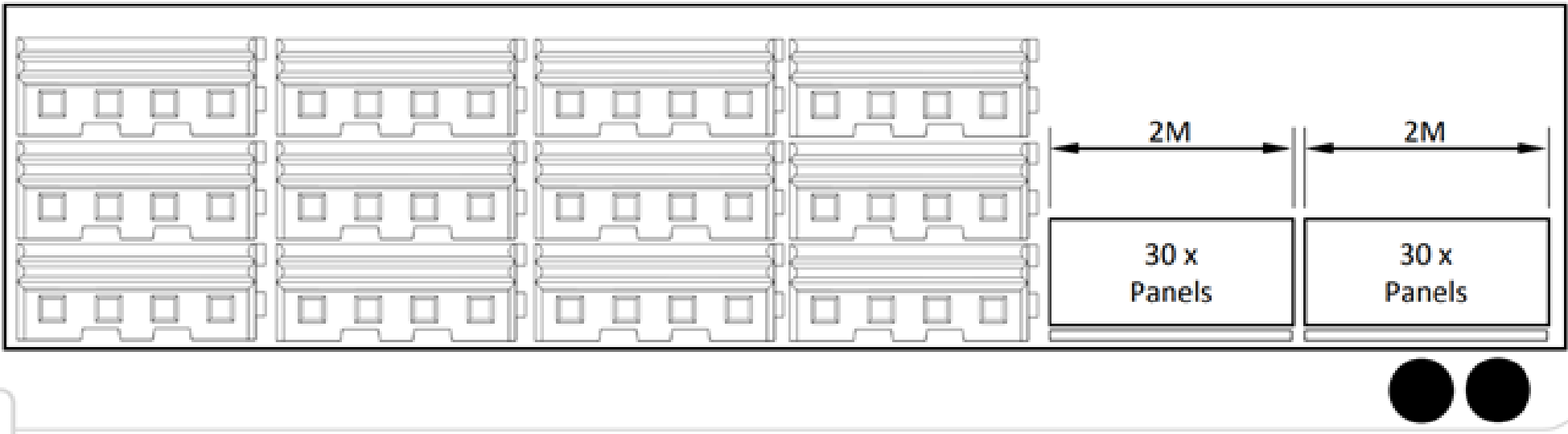


Diagram above demonstrates the correct loading formation when transporting a maximum load of 60 barriers and mesh fence panels, on an artic trailer.



# Assembly Process

1.Push BARRIERS together tightly. (fig 1)

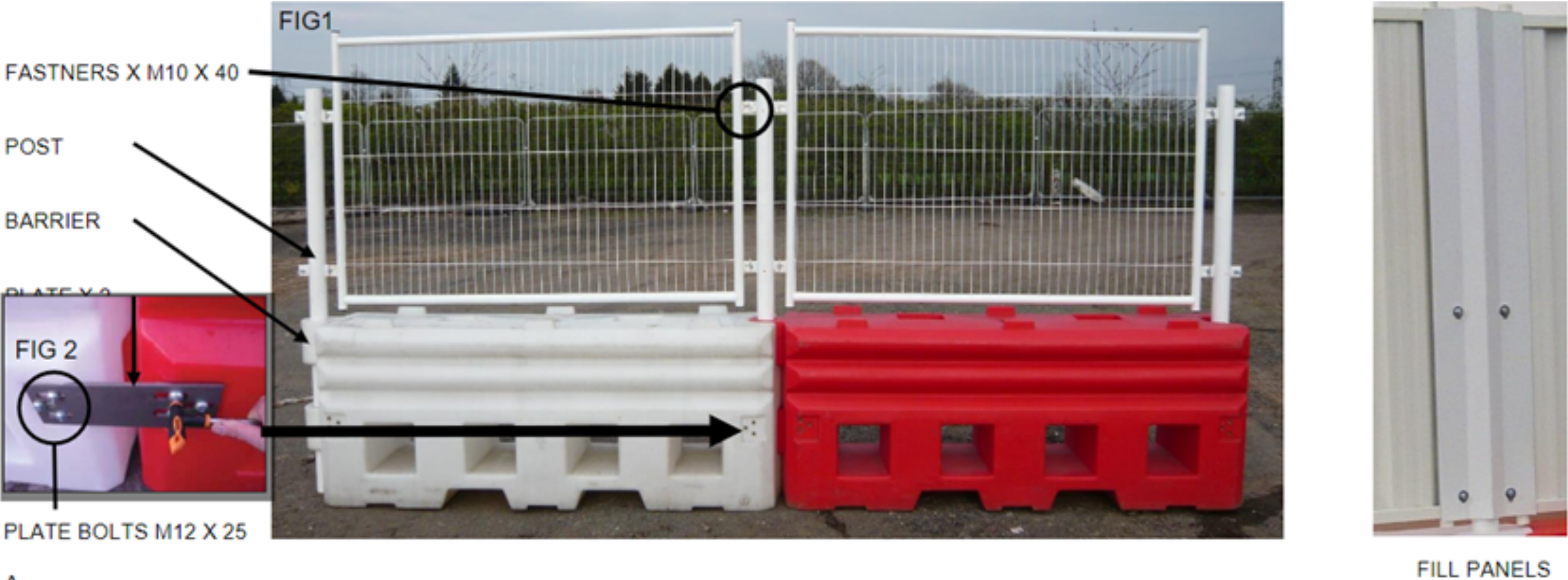
2.Insert POSTS into top holes and push down to ground, twisting of post or adjustment of barrier position may be needed if tight.

3.Fit PLATES in recesses on both sides of the barriers using 12 x M12 x 25mm bolts with washer. (fig 2)

4.Tighten using a 10mm Alan Key.

5.With 2 fitters, position the PANELS (hoarding or mesh) aligning the lugs.

6.Fasten POST and PANEL through lugs holes, using 4 x M10 x 40mm bolts, using 2 x 17mm spanners.



<sup>A</sup>  
ENSURE THAT 2WASHERS ARE FITTED UNDER EACH NUT AND BOLT -TOTAL 4 WASHERS PER BOLT -TO SPREAD THE LOAD.WHERE USING FILL PANELS SECURE THEM IN PLACE USING THE BOLTS AT THIS POINT.