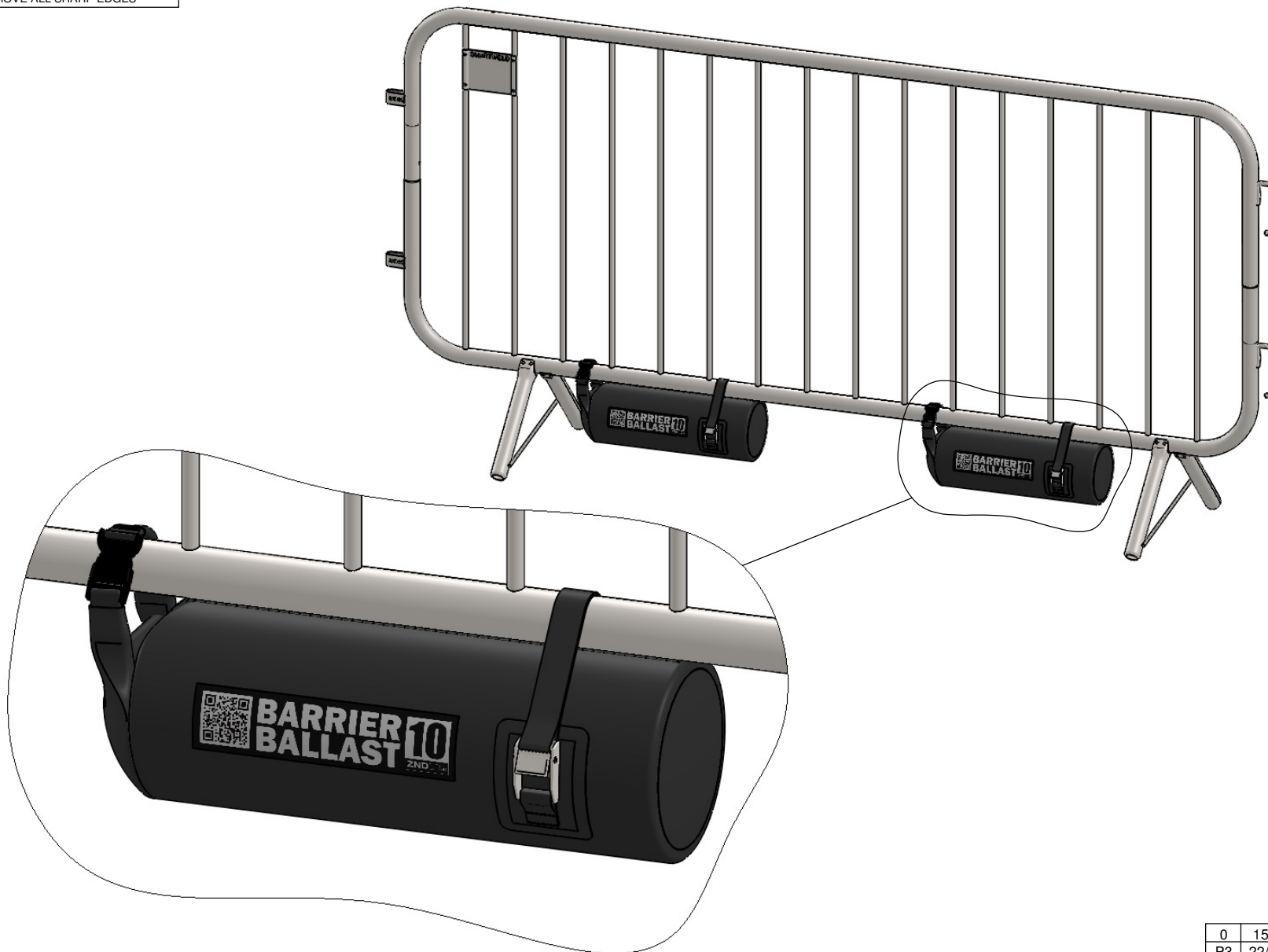


ALL DIMENSIONS IN MILLIMETRES
REMOVE ALL SHARP EDGES

THIRD ANGLE PROJECTION
DO NOT SCALE DRAWING



0	15/2/21	ISSUED FOR MANUFACTURE	GC	.	.
P3	22/12/20	ISSUED FOR APPROVAL	GC	.	.
REV	DATE	DESCRIPTION	DRN	CHKD	APPR

TOLERANCES - UNLESS STATED OTHERWISE

FABRICATION	UP TO 300mm	+/- 1mm
	UP TO 1000mm	+/- 2mm
	1001mm & ABOVE	+/- 3mm
	ANGULAR	+/- 1°
MACHINING	+/- 0.2mm	
GAUGE	+/- 10%	
WEIGHT	+/- 10% (DUE TO MATERIAL PROPERTIES & TOLERANCES)	

TITLE:

BARRIER BALLAST 10

	NAME	SIGNATURE	DATE
DRAWN	G. CRICK		30/9/20
CHK'D			

FINISH:

NONE

MATERIAL:

PVC & PLASTIC

FirstFence

01283 512 111 sales@firstfence.co.uk

Drw / Stockcode No.

12051050

Revision

0

THE COMPANY RETAIN THE RIGHT TO PERIODICALLY ALTER INFORMATION WITHIN THIS DRAWING SHEET AND WILL ATTEMPT TO NOTIFY ALL PARTIES CONCERNED OF ANY CHANGES AND THE INFORMATION ON THIS SHEET SHOULD NOT BE REPRODUCED WITHOUT THEIR WRITTEN CONSENT.

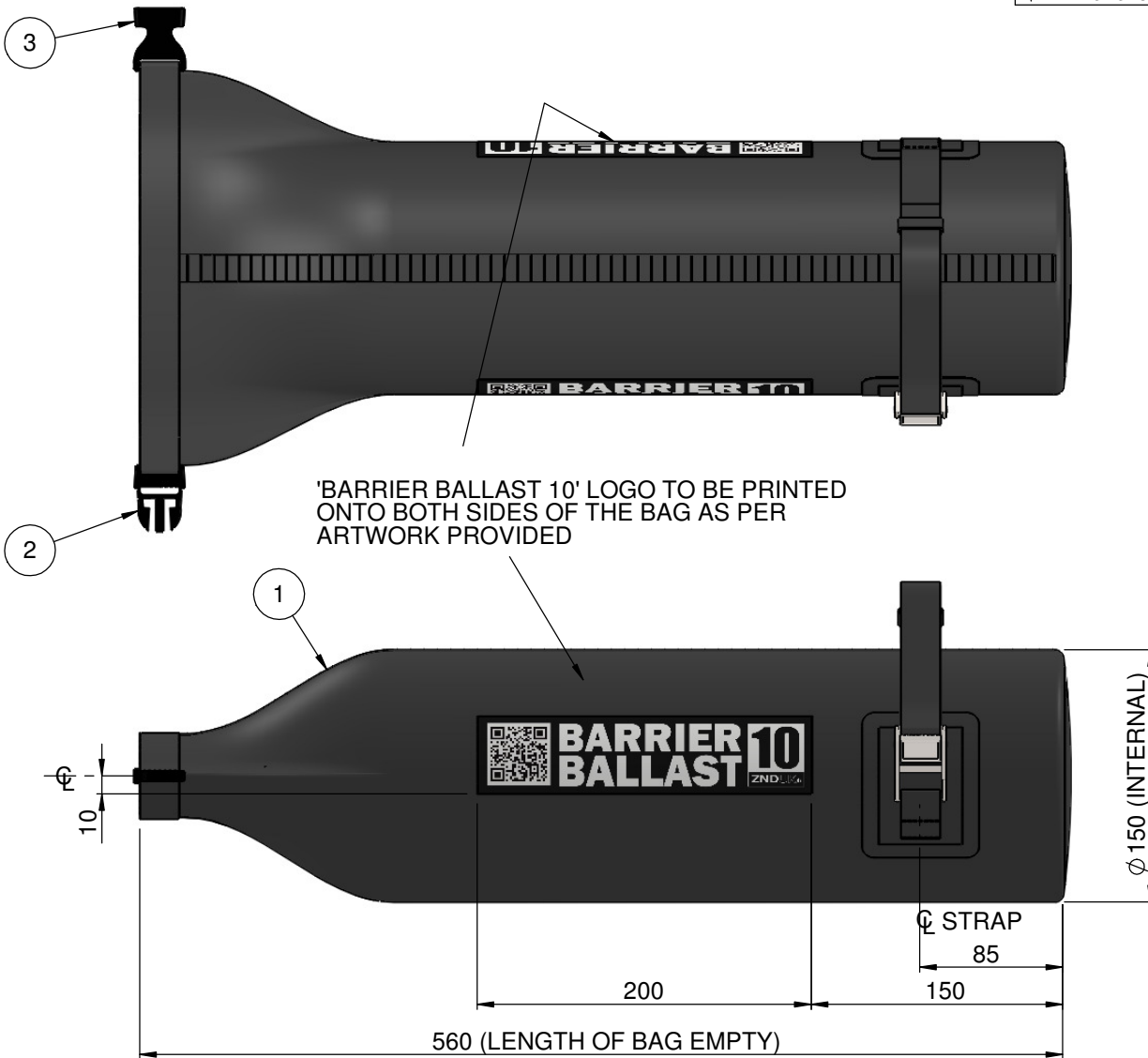
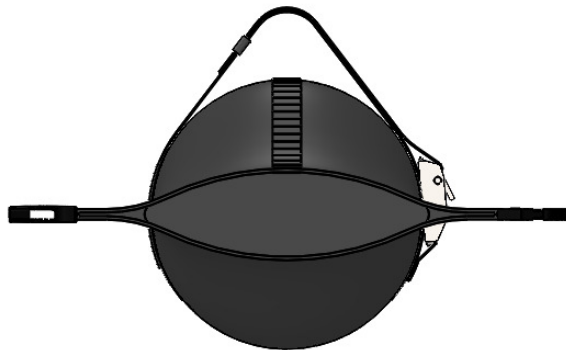
WEIGHT: SCALE: 1:10 SHEET 1 OF 5 A3

1	2
ALL DIMENSIONS IN MILLIMETRES REMOVE ALL SHARP EDGES	DO NOT JOIN MATERIAL TOGETHER TO MAKE INDIVIDUAL ITEMS

8
THIRD ANGLE PROJECTION DO NOT SCALE DRAWING

BAG DETAILS:
 MATERIAL -WATERPROOF PVC
 LENGTH OF BAG EMPTY - 560mm
 INTERNAL DIAMETER OF BAG - 150mm
 MATERIAL THICKNESS - 0.5mm

BAGS TO BE PACKED FLAT FOR TRANSPORT



'BARRIER BALLAST 10' LOGO TO BE PRINTED
 ONTO BOTH SIDES OF THE BAG AS PER
 ARTWORK PROVIDED

ITEM No.	PART No.	DESCRIPTION	QTY
1	ZND1417-1	PVC BAG	1
2	ZND1417-2	25mm MALE BUCKLE	1
3	ZND1417-3	25mm FEMALE BUCKLE	1
4	ZND1417-4	25mm STEEL BUCKLE	1

0	15/2/21	ISSUED FOR MANUFACTURE	GC	.	.
P3	23/12/20	ISSUED FOR APPROVAL	GC	.	.
REV	DATE	DESCRIPTION	DRN	CHKD	APPR

TOLERANCES - UNLESS STATED OTHERWISE		
FABRICATION	UP TO 300mm	+/- 1mm
	UP TO 1000mm	+/- 2mm
	1001mm & ABOVE	+/- 3mm
	ANGULAR	+/- 1°
MACHINING	+/- 0.2mm	
GAUGE	+/- 10%	
WEIGHT	+/- 10% (DUE TO MATERIAL PROPERTIES & TOLERANCES)	

TITLE: BARRIER BALLAST 10 GA SHT 1				REV: 1	DATE: 10/1/20
	NAME	SIGNATURE	DATE	MATERIAL:	
DRAWN	G. CRICK		30/9/20	PVC & PLASTIC	
CHK'D					
FINISH:					
NONE					

First Fence	
01283 512 111 sales@firstfence.co.uk	
Drw / Stockcode No.	
12050150-GA1	
Revision	
0	

THE COMPANY RETAIN THE RIGHT TO PERIODICALLY ALTER INFORMATION WITHIN THIS DRAWING SHEET AND WILL ATTEMPT TO NOTIFY ALL PARTIES CONCERNED OF ANY CHANGES AND THE INFORMATION ON THIS SHEET SHOULD NOT BE REPRODUCED WITHOUT THEIR WRITTEN CONSENT.

SEE SAMPLE PHOTO
OF THE MALE BUCKLE
FITTED INTO THE FABRIC
STRAP

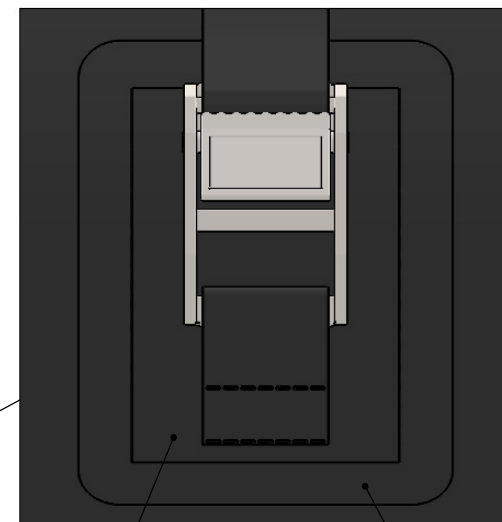
NOTE:
BAG IS TO BE JOINED FROM TOP TO BOTTOM
WITH AN OVERLAP JOINT THAT IS GLUED AND PRESSED.
SAMPLE JOINT IS 16mm WIDE.

BOTTOM OF BAG TO BE FLAT.
BOTTOM TO BE APPROXIMATELY
148mm DIAMETER x 0.5 THICK PVC
AND IT IS TO BE GLUED ONTO THE
WALL OF THE BAG.SEE ATTACHED
PHOTO OF SAMPLE BAG

SEE SAMPLE PHOTO
OF THE BOTTOM OF
THE BAG



NOTE:
'D' RING NOT REQUIRED



PATCH 1

PATCH 2

THE FABRIC STRAPS ARE TO BE STITCHED INTO PATCH 1. PATCH 1 COMPLETE WITH FABRIC STRAP IS THEN GLUED ONTO PATCH 2. PATCH 2 IS THEN GLUED INTO POSITION SHOWN ON THE FACE OF THE PVC BAG. TYPICAL FOR EACH SIDE OF THE BAG.

PATCH 1 IS 50 x 73 x 0.5 THICK PVC
PATCH 2 IS 70 x 93 x 0.5 THICK PVC

560 (LENGTH OF BAG EMPTY)

SEE PHOTO OF THE PATCH ON THE SAMPLE.
IGNORE THE DETAIL OF THE 'D' RING & STRAP

BAG DETAILS:
MATERAIL -WATERPROOF PVC
LENGTH OF BAG EMPTY - 560mm
INTERNAL DIAMETER OF BAG - 150mm
MATERIAL THICKNESS - 0.5mm



TOLERANCES - UNLESS STATED OTHERWISE		
FABRICATION	UP TO 300mm	+/- 1mm
	UP TO 1000mm	+/- 2mm
	1001mm & ABOVE	+/- 3mm
	ANGULAR	+/- 1 °
MACHINING	+/- 0.2mm	
GAUGE	+/- 10%	
WEIGHT	+/- 10% (DUE TO MATERIAL PROPERTIES & TOLERANCES)	

TITLE: BARRIER BALLAST 10
FAB SHT 1

	NAME	SIGNATURE	DATE
DRAWN	G. CRICK		30/9/20
CHK'D	.		.
FINISH:			
NONE			

MATERIAL:

PVC & PLASTIC



01283 512 111 sales@firstfence.co.uk

Drw / Stockcode No.

12051050-FAB 1

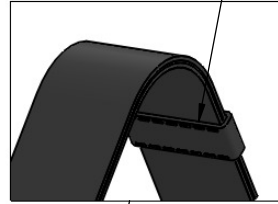
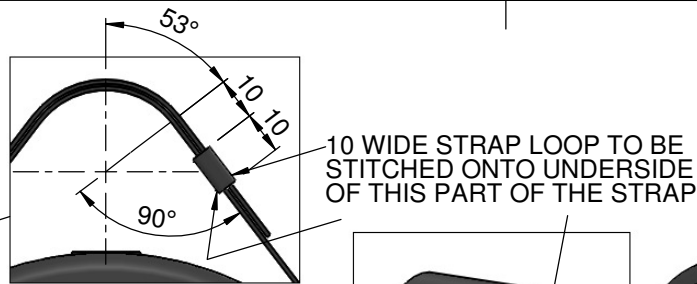
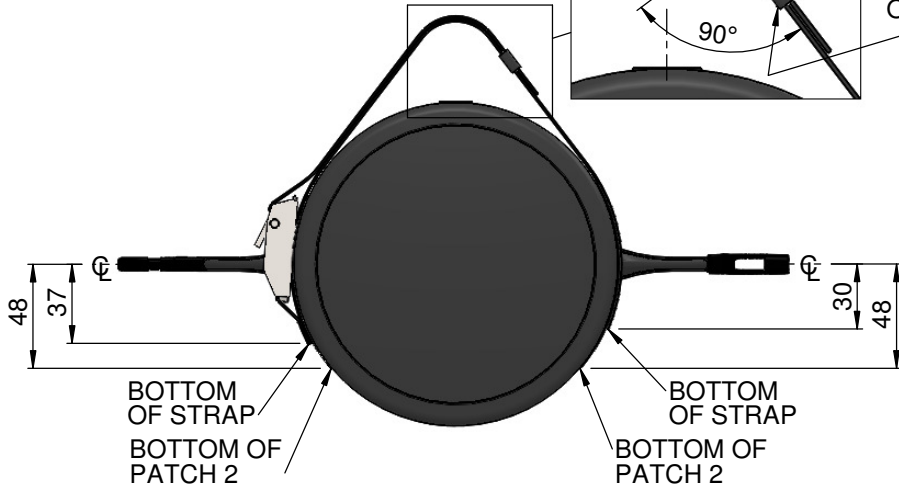
Revision

0

1
ALL DIMENSIONS IN MILLIMETRES
REMOVE ALL SHARP EDGES

2
DO NOT JOIN MATERIAL TOGETHER
TO MAKE INDIVIDUAL ITEMS

8
THIRD ANGLE PROJECTION
DO NOT SCALE DRAWING



THIS STRAP IS 25mm
WIDE x 495mm LONG.

NOTE:
SEE HOW STRAP IS
STITCHED ON TOP PATCH 1

NOTE:
2 ROWS OF STITCHING
INTO PATCH 1

THIS STRAP IS 25mm
WIDE x 70mm LONG

TOLERANCES - UNLESS STATED OTHERWISE		
FABRICATION	UP TO 300mm	+/- 1mm
	UP TO 1000mm	+/- 2mm
	1001mm & ABOVE	+/- 3mm
	ANGULAR	+/- 1°
MACHINING	+/- 0.2mm	
GAUGE	+/- 10%	
WEIGHT	+/- 10% (DUE TO MATERIAL PROPERTIES & TOLERANCES)	

TITLE: **BARRIER BALLAST 10
FAB SHT 2**

NAME	SIGNATURE	DATE
DRAWN G. CRICK		30/9/20
CHK'D		

FINISH: **NONE**

MATERIAL: **PVC & PLASTIC**

0	15/2/21	ISSUED FOR MANUFACTURE	GC	.	.
P3	23/12/20	ISSUED FOR APPROVAL	GC	.	.
REV	DATE	DESCRIPTION	DRN	CHKD	APPR

FirstFence
01283 512 111 sales@firstfence.co.uk

Drw / Stockcode No. **12051050-FAB 2** Revision **0**

THE COMPANY RETAIN THE RIGHT TO PERIODICALLY ALTER INFORMATION WITHIN THIS DRAWING SHEET AND WILL ATTEMPT TO NOTIFY ALL PARTIES CONCERNED OF ANY CHANGES AND THE INFORMATION ON THIS SHEET SHOULD NOT BE REPRODUCED WITHOUT THEIR WRITTEN CONSENT.

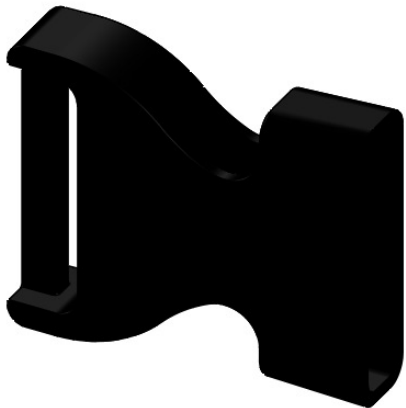
WEIGHT: SCALE: 1:3 SHEET 4 OF 5 A3

1	2
ALL DIMENSIONS IN MILLIMETRES REMOVE ALL SHARP EDGES	DO NOT JOIN MATERIAL TOGETHER TO MAKE INDIVIDUAL ITEMS

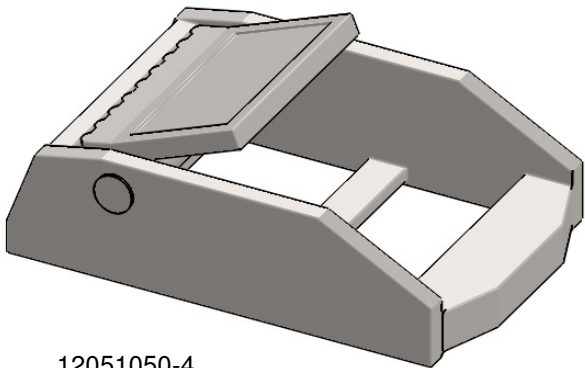
8
THIRD ANGLE PROJECTION DO NOT SCALE DRAWING



12051050-2
MALE BUCKLE TO SUIT 25mm STRAP



12051050-3
FEMALE BUCKLE TO SUIT 25mm STRAP



12051050-4
STEEL SPRUNG LOADED
BUCKLE TO SUIT 25mm STRAP
AS PER SAMPLE PROVIDED

0	15/2/21	ISSUED FOR MANUFACTURE	GC	.	.
P3	23/12/20	ISSUED FOR APPROVAL	GC	.	.
REV	DATE	DESCRIPTION	DRN	CHKD	APPR

TOLERANCES - UNLESS STATED OTHERWISE			TITLE: BARRIER BALLAST 10 MALE & FEMALE BUCKLES		
FABRICATION	UP TO 300mm	+/- 1mm	NAME	SIGNATURE	DATE
	UP TO 1000mm	+/- 2mm	DRAWN	G. CRICK	30/9/20
	1001mm & ABOVE	+/- 3mm	CHK'D	.	.
	ANGULAR	+/- 1 °	MATERIAL: BLACK PLASTIC		
MACHINING	+/- 0.2mm		FINISH: NONE		
GAUGE	+/- 10%				
WEIGHT	+/- 10% (DUE TO MATERIAL PROPERTIES & TOLERANCES)				

First Fence

01283 512 111 sales@firstfence.co.uk

Drw / Stockcode No.	Revision
12051050-2,3 & 4	0

THE COMPANY RETAIN THE RIGHT TO PERIODICALLY ALTER INFORMATION WITHIN THIS DRAWING SHEET AND WILL ATTEMPT TO NOTIFY ALL PARTIES CONCERNED OF ANY CHANGES AND THE INFORMATION ON THIS SHEET SHOULD NOT BE REPRODUCED WITHOUT THEIR WRITTEN CONSENT.