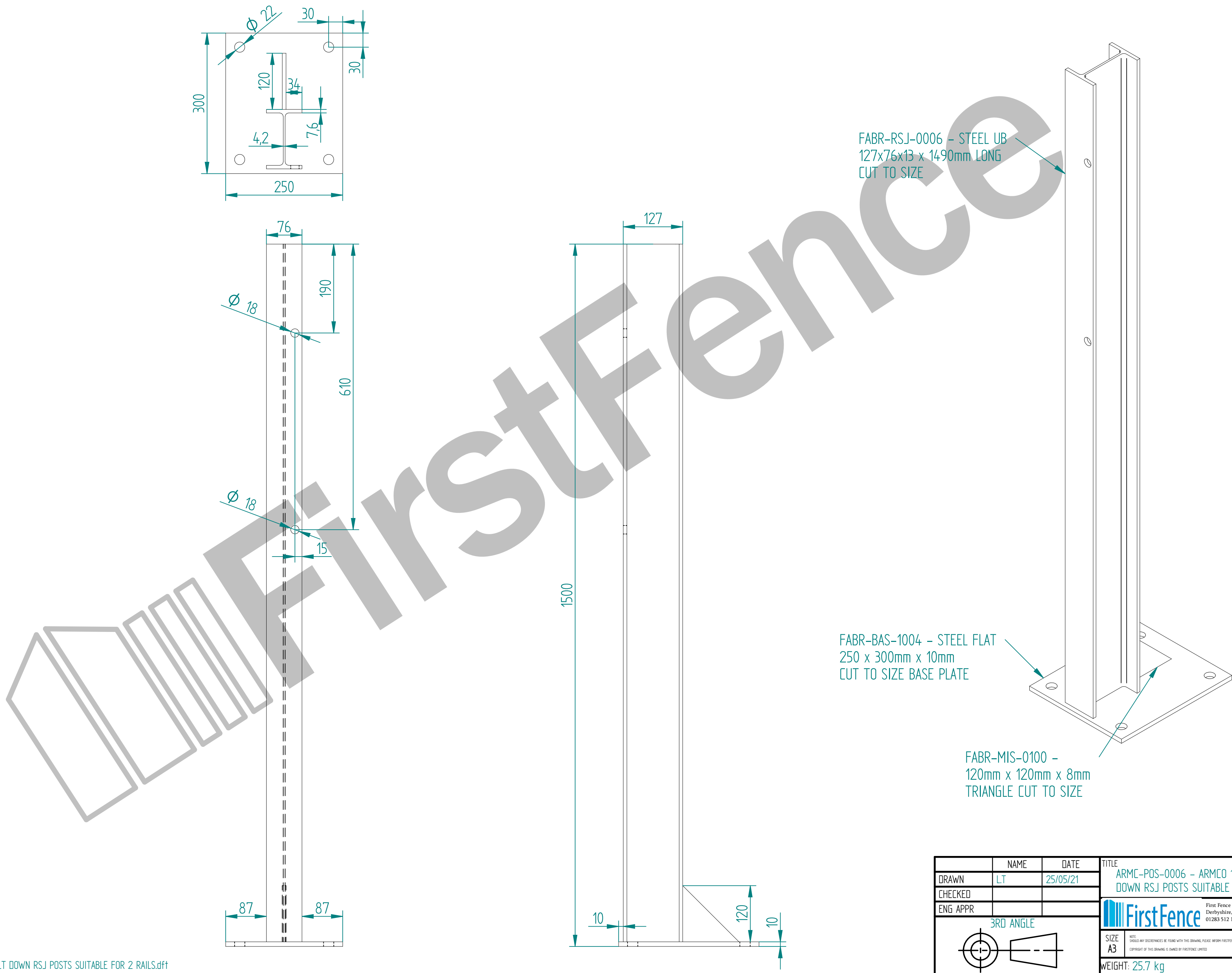



# ARMCO 1500mm BOLT DOWN RSJ POSTS SUITABLE FOR 2 RAILS



	NAME	DATE	TITLE	
DRAWN	LT	25/05/21	ARMC-POS-0006 - ARMCO 1500mm BOLT DOWN RSJ POSTS SUITABLE FOR 2 RAILS	
CHECKED				
ENG APPR				
			 First Fence Ltd, Kiln Way, Swadlincote, Derbyshire, DE11 8EA 01283 512 111 sales@firstfence.co.uk	
			SIZE A3	REV A
			WEIGHT: 25.7 kg	
			SHEET 1 OF 1	